



BLU™

316 Marine Grade Stainless Steel Hardware

The Collection

Five Stunning Finishes
Suited Door and
Window Hardware

Edition 02



COASTAL

Shaping the future.

Our New Sense of Purpose

The shape of things to come

Perfect Fit Guaranteed

The basis for our
decision making.

Superior Standards Always

The principle behind
our actions.

Ultimate Lasting Performance

The status we want
to achieve.

We think beyond products and today's needs and create standard and bespoke hardware solutions for doors and windows, focussed on tomorrow's requirements.

Consistently. Every time.

Why?

To enhance the value of your doors and windows and make them stand out from the crowd.

Loren Jenner

Managing Director, Coastal Group



BLU™ - Your Benefits

DESIGN

Designed to enhance the aesthetics and performance of your external doors and windows and set them apart from your competition.

INNOVATION

We're constantly looking at ways to improve the product offering and performance and create new solutions to meet your needs.

DURABILITY / LONGEVITY

The BLU product range is made from 316 Marine Grade Stainless Steel as standard. Helping resist long term corrosion and keeping your doors and windows looking better for longer.

FINISH

We include an additional finishing process during manufacture to create a consistent finish and quality feel.

COMPREHENSIVE RANGE

A full suited range of quality hardware across your doors and windows.

VALUE FOR MONEY

Excellent lifetime value, providing you with quality you can afford.

LIFETIME GUARANTEE

Guaranteed to last as long as the door or window the hardware is fitted to. Providing peace of mind for you and the homeowner.

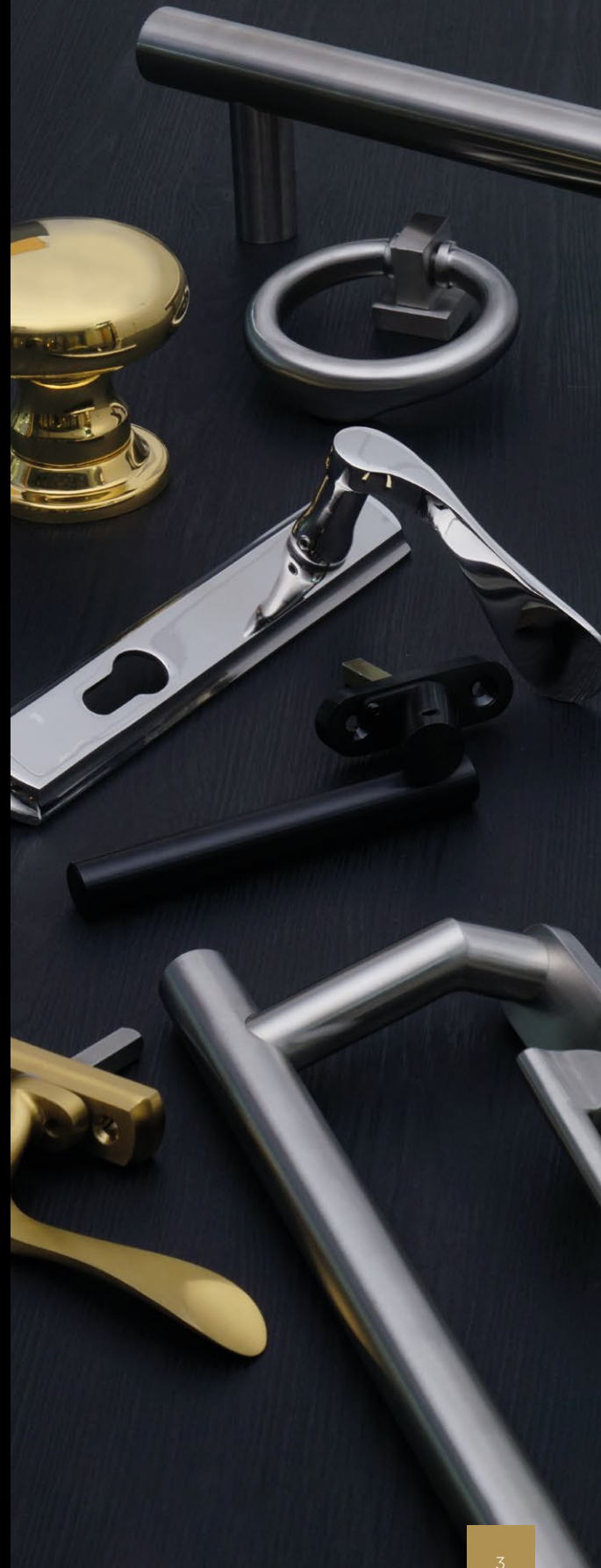
The BLU™ brand range is owned, manufactured and sold by:



COASTAL

Shaping the future.

www.coastal-group.com





The benefits of using 316 Marine Grade Stainless Steel

Where corrosion levels are high, such as coastal environments and in acidic timber, commonly used metals such as zinc and 304 stainless steel are not able to stand up to the elements and corrosion can quickly start.

However there are many corrosive elements in the atmosphere wherever your doors and windows are, situated on the coast or in a city.

316 Marine Grade Stainless Steel is stronger and has higher levels of corrosion resistance than 304 Stainless Steel. That is why we use 316 Marine Grade Stainless Steel as standard on all BLU™ products.

So wherever your doors and windows are installed, by fitting BLU™ hardware you can have peace of mind your hardware will last at least as long as your doors and windows.



BLU™ Hardware is designed to enhance the aesthetics and performance of your doors and windows. The range is made from 316 Marine Grade Stainless Steel to provide the best protection from corrosion, and help your doors and windows to look and perform better for longer.

To meet market demands for both classic and contemporary styles, we've taken our 316 Marine Grade Stainless Steel hardware and added a PVD Coating to create some new and very special finishes.

What is PVD Coating?

PVD stands for Physical Vapour Deposition. Also known as 'thin-film' coating, PVD coating is a process in which the hardware is placed inside a vacuum chamber and given a negative charge, a solid material (the coating) is then vapourised in this vacuum and given a positive charge forcing it to deposit atom by atom onto the surface of the hardware.

The coating is not simply layers of metal, the material is deposited atom by atom providing an ultra-thin, highly accurate and extremely strong coating. It also provides a much more uniform appearance and finish than traditional coating methods.

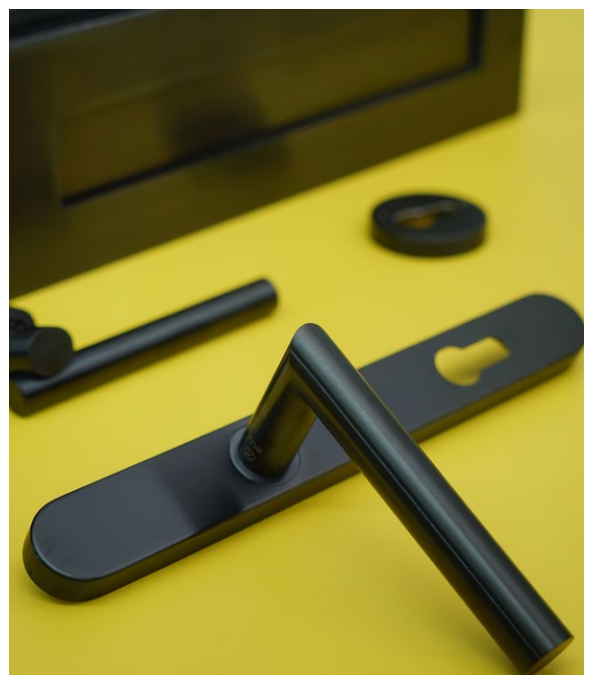
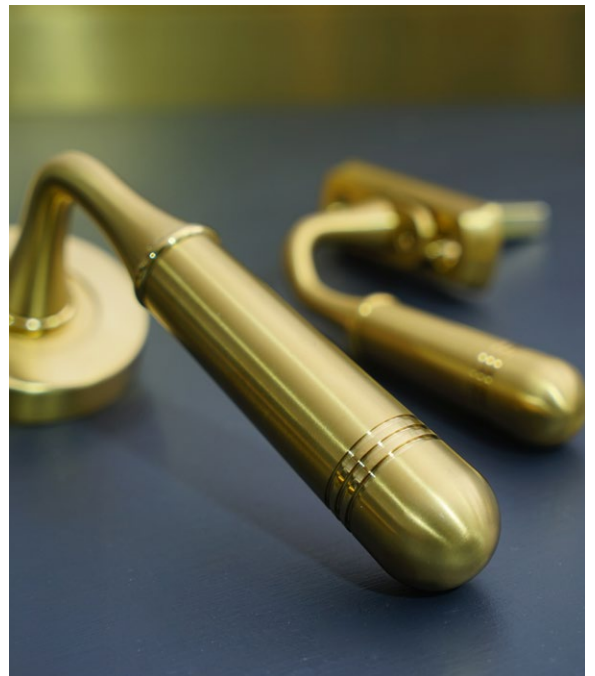
As the coating is very thin it enables the texture of the underlying metal to still be visible and felt. So for a satin finished product we use a base material of satin stainless steel and apply the PVD coating to it.

The Benefits of PVD Coating

- The PVD process increases the longevity and durability of the hardware, making it more resistant to wear, weather and corrosion.
- The PVD coating does not fade, discolour or tarnish and isn't affected as much by UV rays.
- The PVD coating process is more sustainable and environmentally friendly than traditional coating methods. No harmful gases or other substances are released and there is no waste during the coating process.
- The PVD process does not affect the recycling value of the stainless steel base material.

Our finishes include:

- Satin Stainless Steel – raw 316 Marine Grade Stainless Steel with an extra finishing process applied
- Polished Stainless Steel – raw 316 Marine Grade Stainless Steel polished to a perfect mirror finish
- PVD Stainless Satin Brass – 316 Marine Grade Satin Stainless Steel with a PVD Brass coating applied
- PVD Stainless Polished Brass – 316 Marine Grade Polished Stainless Steel with a PVD Brass coating applied
- PVD Stainless Satin Black – 316 Marine Grade Satin Stainless Steel with a PVD Black coating applied



BLU™ 316 Marine Grade Stainless Steel

SATIN STAINLESS STEEL FINISH

Raw 316 Marine Grade Stainless Steel with an extra fine finishing processes applied to give it our unique 'super-satin' silky finish.

Suits classic styles just as much as the modern contemporary look.



HAB7
Offset Rectangular 'T' Bar
Pull Handle

KM388
Centre Door Knob

SST87
Contemporary Window
Handle - Cranked

KM9
Patio Slide Door Handle

CP50
Contemporary Cylinder Pull - Euro

KM930
Ergonomic Lever Door
Handle on Oval Rose

KM045
Oval Escutcheon - Euro



LP400
Sleeved Letter Plate

KM7
Lift & Slide Door Handle

HY3R
Slim Knuckle Window Hinge

To view the Suited Hardware brochure for Satin Stainless Steel
SCAN the QR CODE.

For more information about the products visit www.coastal-group.com



Regent Door and Window Handle

REG090 - Regent Lever Door Handle



REG020 - Regent Window Handle



Opera Door and Window Handle

TBH095 - Opera Lever Door Handle on Backplate



TBH020 - Opera Window Handle



TBH100 - Opera Lever Door Handle on Round Rose



LP400
Sleeved Letter Plate



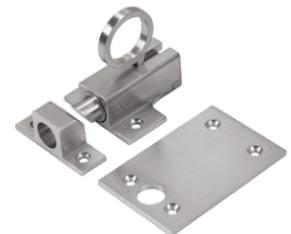
BLN
Numerals and Letters



SST91 / SST93
Casement Window Stay



BFC45
Fanlight Catch



Door Knockers

DKB200 - Ring Knocker



DKB195 - Doctors Knocker



DKB155 - Contemporary Knocker



Ergonomic Lever Door Handle

KM130 - Ergonomic on Backplate



KM930 - Ergonomic on Oval Rose



KM035 - Ergonomic on Round Rose



'Mitre' Lever Door Handle

KM078 - Mitre on Backplate (Sprung)



KM960 - Mitre on Oval Rose



KM060 - Mitre on Round Rose



KM070 - Slimline (Unsprung)



'T' Bar Lever Door Handle

KM965 - 'T' Bar on Oval Rose



KM065 - 'T' Bar on Round Rose



'Wing' Lever Door Handle

WH990 - Wing on Oval Rose



WH900 - Wing on Round Rose



Window Handles

SST81 - Contemporary (Offset)



SST87 - Contemporary (Cranked)



SST94 - Contemporary (Inline)



SST100 - Contemporary (Inline Angled)



TTH50 - Tilt & Turn Window Handle



Door Knobs

KM388 - Classic Round



KM150 - Contemporary Round



KM120 - Contemporary Square



Security Escutcheons - Euro

SE40 - Security Escutcheon / Cylinder Pull Sets - Euro



CP80 - Internal Cylinder Pull with External Security Escutcheon - Euro



SE38 - Security Escutcheon - Euro



Escutcheon - Euro

KM045 - Oval Escutcheon



KM055 - Round Escutcheon



KM056 - Square Escutcheon



Slim Escutcheon - Euro

KM048 - Self Adhesive Oval Escutcheon



KM058 - Self Adhesive Round Escutcheon



SE35 - Slimline Escutcheon



Cylinder Pulls - Euro

CP30 - Classic



CP50 - Contemporary



CP55 - Contemporary (Inside Pull Only)



Pull Handles

Available in different lengths and fixing configurations

HAB2 - Inline Round 'T' Bar



HAB6 - Offset Round 'T' Bar



HAB15 - Inline Rectangular 'T' Bar



HAB7 - Offset Rectangular 'T' Bar



HAB4 - Square Mitre



HAB9 - 'V' Style



HAB20 - 'D' Style Commercial Handle



HAB20 - Offset 'D' Style Commercial Handle



HAB8 - Bow Shape Pull Handle



Door Hinges

HQ4 - Butt Hinge - Square End



HQ4R - Butt Hinge - Radius End



HQ4-SEC - Butt Hinge - Security

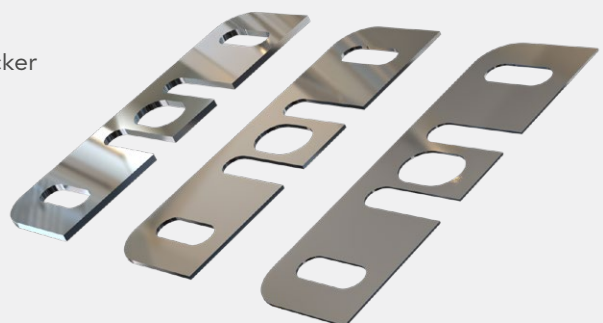


HQ45 - Projection Hinge



HQ

Shimwell Hinge Packer



Straight Sliding Door Handles

KM859 - Straight Slide Handle Kit
Inline Round 'T' Bar
(Available in different configurations)



KM850 - Straight Slide Handle Kit
Offset Round 'T' Bar
(Available in different configurations)



KM853 - Straight Slide Handle Kit
Inline Rectangular 'T' Bar
(Available in different configurations)



KM856 - Straight Slide Handle Kit
Offset Rectangular 'T' Bar
(Available in different configurations)



Lift & Slide Door Handle

KM7 Series
(Available in different configurations)



Patio Slide Door Handle

KM9 Series
(Available in different configurations)



Bi-Fold Door Leaf Handle

KM100 - Flat Handle (Sprung)



KM115 - Flat Handle with Euro Profile



Flush Pulls

FP120 - Screw Fix FP150 - Glue Fix



Patio Thumbturns

KM200 - Oval Rose KM250 - Round Rose



Window Hinges

HY3 - Slim Knuckle- Square End

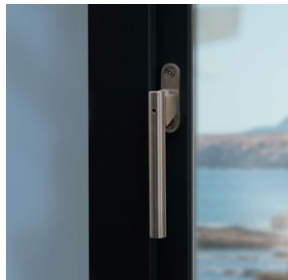


HY3R - Slim Knuckle- Radius End



FH70 - Tritus Lift-Off Hinge





BLU™ 316 Marine Grade Stainless Steel

POLISHED STAINLESS STEEL FINISH

Raw 316 Marine Grade Stainless Steel polished to perfection to ensure a stunning mirror smooth reflective finish.

Typically used on classic period designs.



KM388
Centre Door Knob




DKB200
Ring Door Knocker



REG090
Regent
Lever Door Handle



CP30
Classic Cylinder Pull - Euro



CP50
Contemporary Cylinder Pull - Euro



KM060
Mitre Lever Door Handle
on Round Rose



KM045
Oval Escutcheon - Euro



REG020
Regent Window Handle

LP400
Sleeved Letter Plate



HY3
Slim Knuckle Window Hinge



HQ4
Butt Hinge - Square Corner



KM055
Round Escutcheon - Euro



FH70
TRITUS™ Lift-Off Hinge

To view the Suited Hardware brochure for Polished Stainless Steel
SCAN the QR CODE.

For more information about the products visit www.coastal-group.com



**Regent
Door & Window Handle**

REG090 - Regent Lever Door Handle



REG020 - Regent Window Handle



Cylinder Pulls - Euro

CP50 - Contemporary Cylinder Pull

CP30 - Classic Cylinder Pull



Door Knockers

DKB195 - Doctors Knocker

DBK200 - Ring Knocker



KM388

Classic Centre Door Knob



LP400

Sleeved Letter Plate



Mitre Lever Door Handles

KM078 - Mitre on Backplate



KM960- Mitre on Oval Rose



KM060 - Mitre on Round Rose



Escutcheons - Euro

KM045 - Oval Escutcheon



KM055 - Round Escutcheon



Door Hinges

HQ4 - Butt Hinge - Square Corner



HQ4R - Butt Hinge - Radius Corner



HQ45 - Projection Hinge



Window Hinges

HY3 Slim Knuckle - Square Corner



HY3R Slim Knuckle - Radius Corner



FH70 - Tritus Lift-Off Hinge



BLU™ 316 Marine Grade Stainless Steel PVD STAINLESS SATIN BRASS FINISH

Our 316 Marine Grade Satin Stainless Steel with a PVD Brass coating applied to it to give a warm satin finish which looks equally at home with classic or contemporary styles.

KM388
Centre Door Knob



CP30
Classic Cylinder Pull -
Euro



REG090
Regent
Lever Door Handle



REG020
Regent
Window Handle



DKB200
Ring Door Knocker

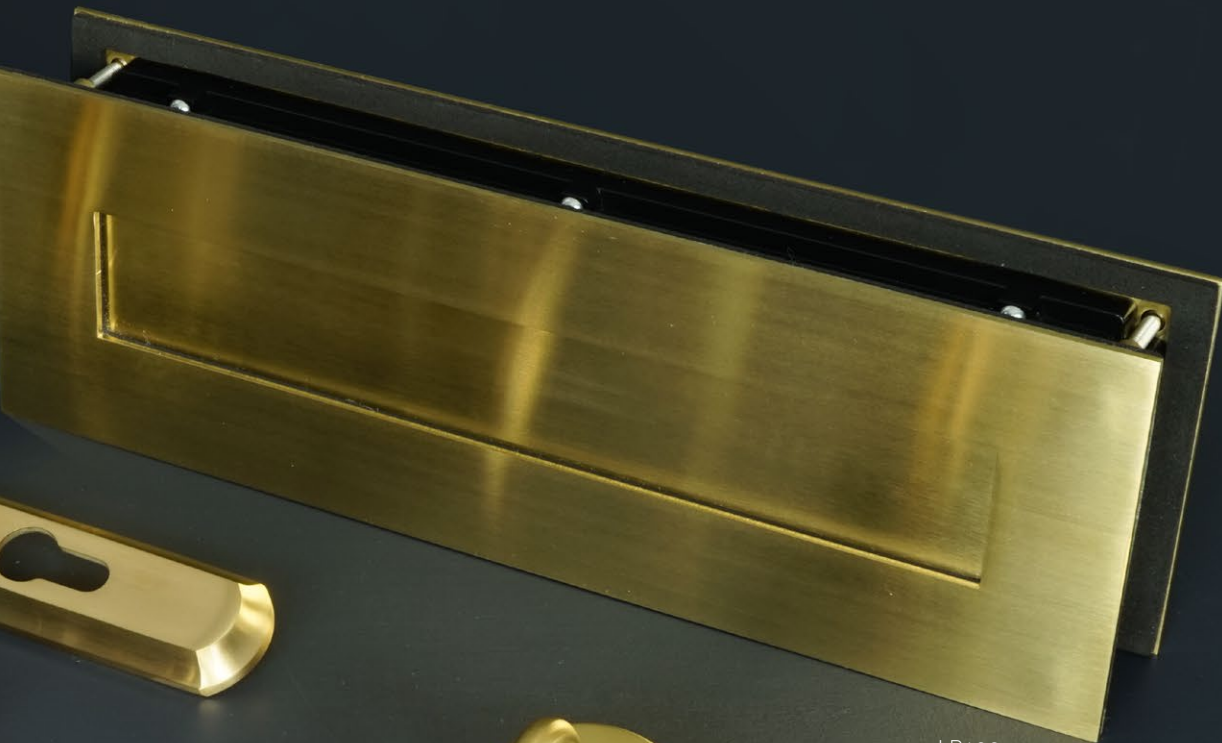


HQ4
Butt Hinge



TBH020
Opera
Window Handle





LP400
Sleeved Letter Plate



TBH100
Opera Lever Door Handle
On Round Rose



KM055
Round Escutcheon - Euro

To view the Suited Hardware brochure for PVD Stainless Satin Brass
SCAN the QR CODE.

For more information about the products visit www.coastal-group.com



Regent Door and Window Handle

REG090 - Regent Lever Door Handle



REG020 - Regent Window Handle



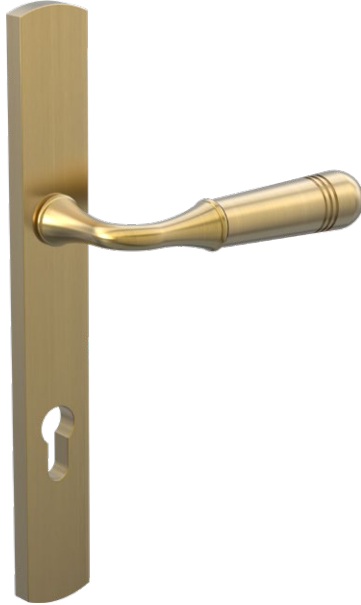
KM388

Classic Centre Door Knob



Opera Door and Window Handle

TBH095 - Opera Lever Door Handle on Backplate



TBH020 - Opera Window Handle



TBH100 - Opera Lever Door Handle on Round Rose



Door Knockers

DKB195 - Doctors Knocker



DBK200 - Ring Knocker



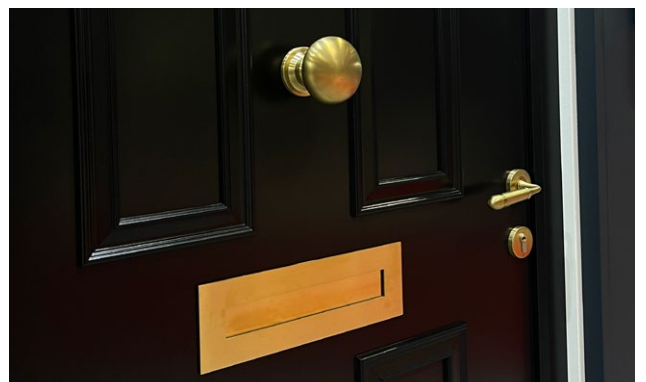
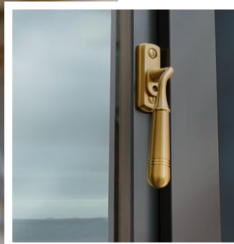
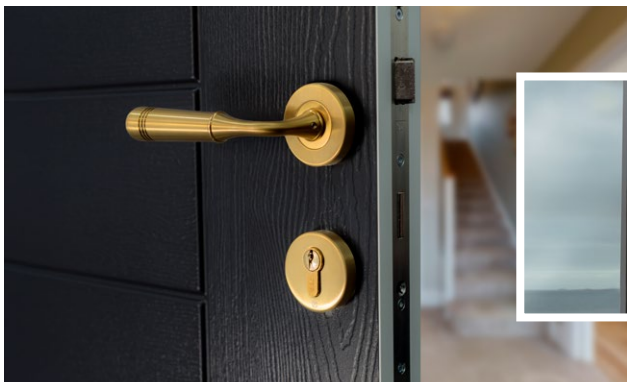
LP400

Sleeved Letter Plate



CP30

Classic Cylinder Pull





KM060

Mitre Lever Door on Round Rose



KM055

Round Escutcheon



Door Hinges

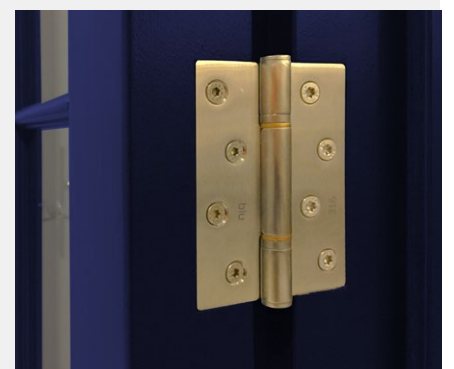
HQ4 - Butt Hinge - Square Corner



HQ4R - Butt Hinge - Radius Corner



HQ45 - Projection Hinge



BLU™ 316 Marine Grade Stainless Steel PVD STAINLESS POLISHED BRASS FINISH

Our 316 Marine Grade Polished Stainless Steel with a PVD Brass coating applied to it to give a warm polished to perfection finish which is synonymous with classic period styles.



KM388
Centre Door Knob



CP30
Classic Cylinder Pull - Euro



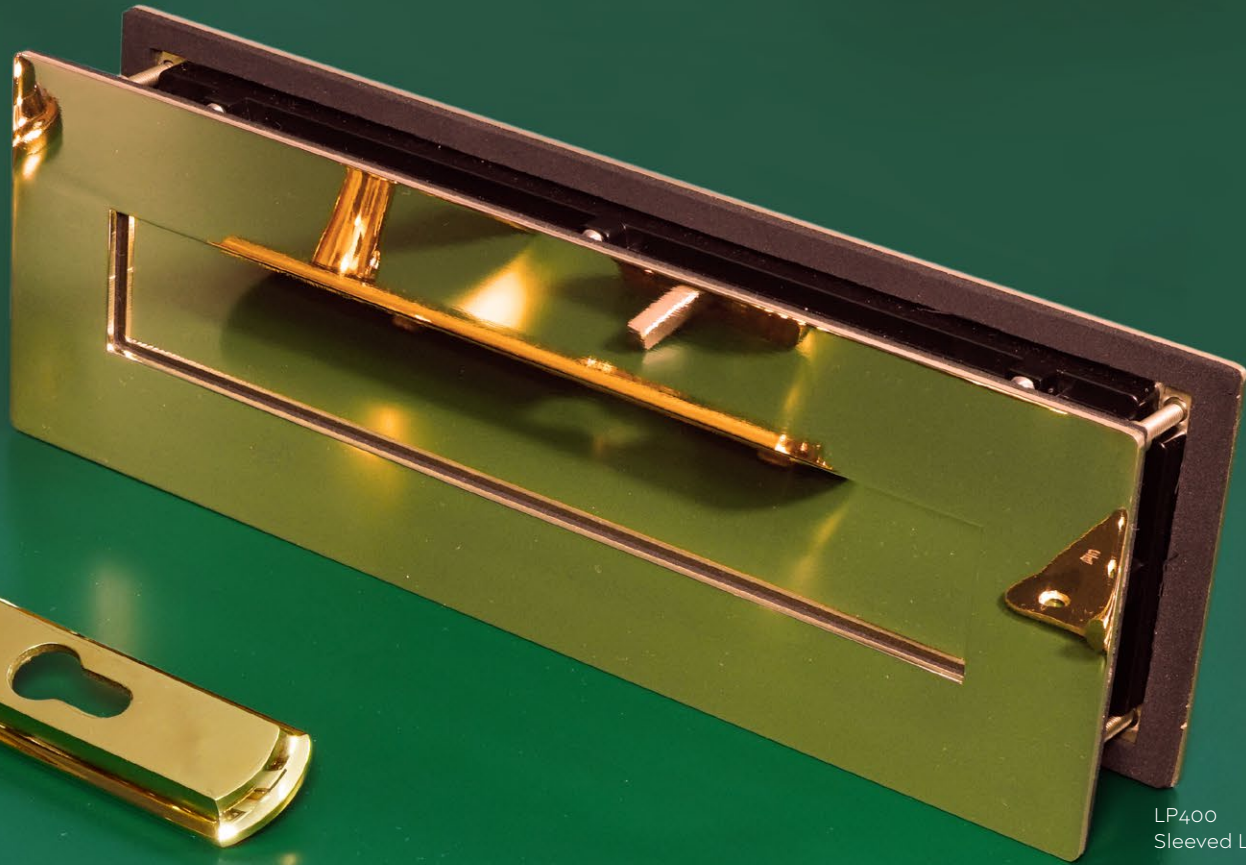
REG090
Regent
Lever Door Handle



REG020
Regent
Window Handle



DKB200
Ring Door Knocker



LP400
Sleeved Letter Plate



HY3R
Slim Knuckle Window Hinge



FH70
TRITUS™ Lift-Off Hinge



HQ4
Butt Hinge

To view the Suited Hardware brochure for PVD Stainless Polished Brass
SCAN the QR CODE.

For more information about the products visit www.coastal-group.com



**Regent
Door and Window Handle**

REG090 - Regent Lever Door Handle



REG020 - Regent Window Handle



Door Hinges

HQ4 - Butt Hinge - Square Corner



HQ4R - Butt Hinge - Radius Corner



HQ45 - Projection Hinge



Window Hinges

HY3 Slim Knuckle- Square Corner



HY3R Slim Knuckle- Radius Corner



FH70 - Tritus Lift-Off Hinge



Door Knockers

DKB195 - Doctors Knocker



DBK200 - Ring Knocker



CP30

Classic Cylinder Pull



KM388

Classic Centre Door Knob



LP400

Sleeved Letter Plate





BLU™ 316 Marine Grade Stainless Steel PVD STAINLESS SATIN BLACK FINISH

Our 316 Marine Grade Satin Stainless Steel with a PVD Black coating applied to it to give a distinctive satin finish providing excellent aesthetics for both contemporary and traditional styles.

Our PVD Stainless Satin Black finish has been successfully Salt Spray Tested to 1,000 hours as per ASTM B117-2019.

HAB15
Inline Rectangular 'T' Bar
Pull Handle



CP30
Classic Cylinder Pull -
Euro



KM388
Centre Door Knob



DKB200
Ring Door Knocker



KM078
Mitre Lever Door Handle
on Backplate

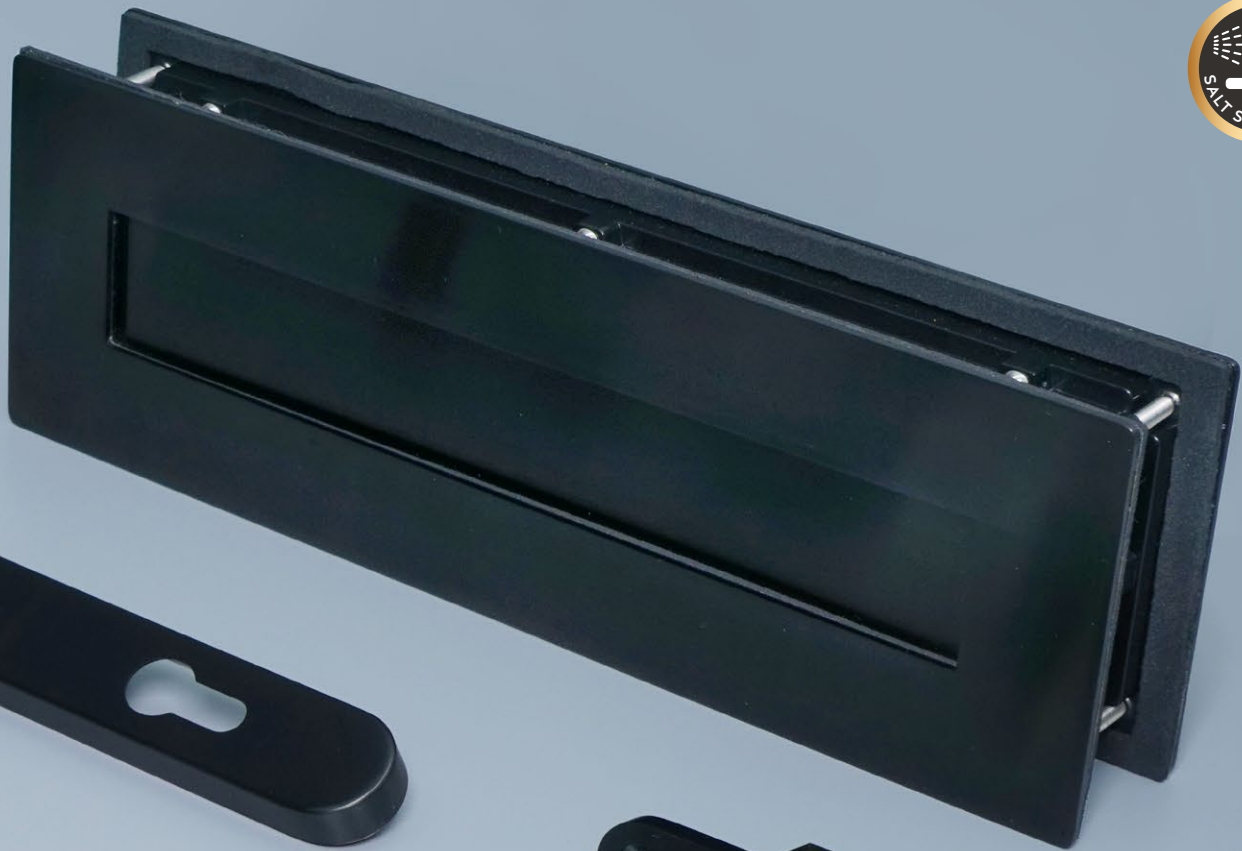


TBH100
Opera Lever Door Handle
On Round Rose



HQ4
Butt Hinge
Note: Matt Smooth Black Finish





LP400
Letter Plate



KM055
Round Escutcheon - Euro



SST87
Window Handle - Cranked



TBH020
Opera Window Handle

To view the Suited Hardware brochure for PVD Stainless Satin Black
SCAN the QR CODE.

For more information about the products visit www.coastal-group.com



Regent Door and Window Handle

REG090 - Regent Lever Door Handle



REG020 - Regent Window Handle



KM388

Classic Centre Door Knob



Opera Door and Window Handle

TBH095 - Opera Lever Door Handle on Backplate



TBH020 - Opera Window Handle



TBH100 - Opera Lever Door Handle on Round Rose



Door Knockers

DKB195 - Doctors Knocker



DBK200 - Ring Knocker



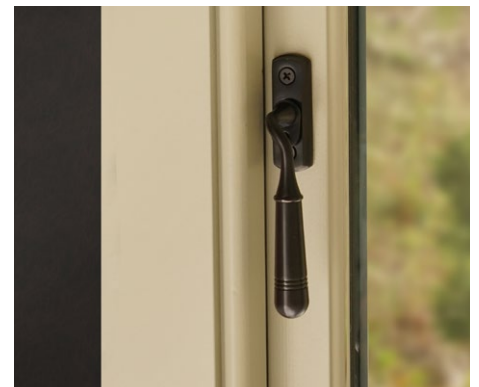
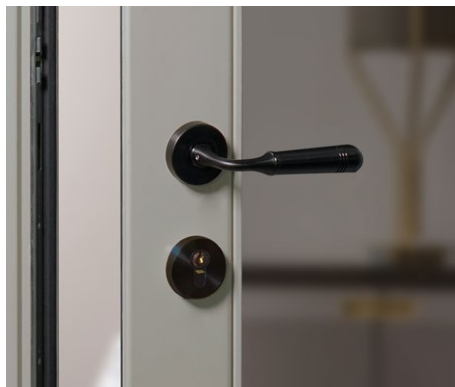
LP400

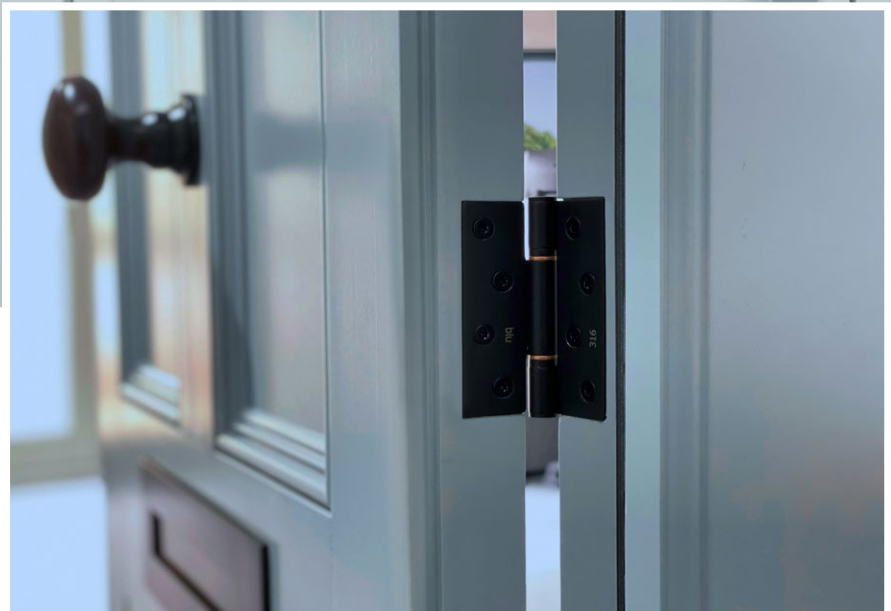
Sleeved Letter Plate



CP30

Classic Cylinder Pull





Mitre Lever Door Handles

KM078 - Mitre Lever on Backplate



Pull Handles

HAB2 - Inline Round 'T' Bar (900mm)



HAB15 - Inline Rectangular 'T' Bar (900mm)



KM060 - Mitre on Round Rose



KM055 - Round Escutcheon



KM045 - Oval Escutcheon



Window Handles

SST100 - Contemporary (Inline Angled)



SST94 - Contemporary (Inline)



SST87 - Contemporary (Cranked)



Door Hinges

HQ4 - Butt Hinge - Square Corner



Matt Smooth Black Finish

HQ4R - Butt Hinge - Radius Corner



Matt Smooth Black Finish

HQ45 - Projection Hinge



Window Hinges

HY3 Slim Knuckle- Square Corner



Matt Smooth Black Finish

HY3R Slim Knuckle- Radius Corner



Matt Smooth Black Finish

FH70 - Tritus Lift-Off Hinge



Ask about our new BLU-e Biometric Bar Pull Handles

The best pull handles just got better with the introduction of integrated SMART Technology.

Built-in Biometric Fingerprint Scanner on the pull handle operates the lock.

Keeps the aesthetics of the door clean and contemporary whilst providing modern security technology.

Enables simple one-handed keyless entry.

Multiple combinations of Pull Handle and connection technology available including Biometric, Phone and Alexa.

Contact us for more information
sales@coastal-group.com or 01726 871 025.



Shaping the future.



COASTAL

COASTAL GROUP

Head Office: Global House, Bojea Industrial Estate, St Austell, Cornwall, PL25 5RJ, UK

T 01726 871 025 E sales@coastal-group.com W coastal-group.com

Follow us on:



© Coastal Specialist Ironmongery Ltd 2022