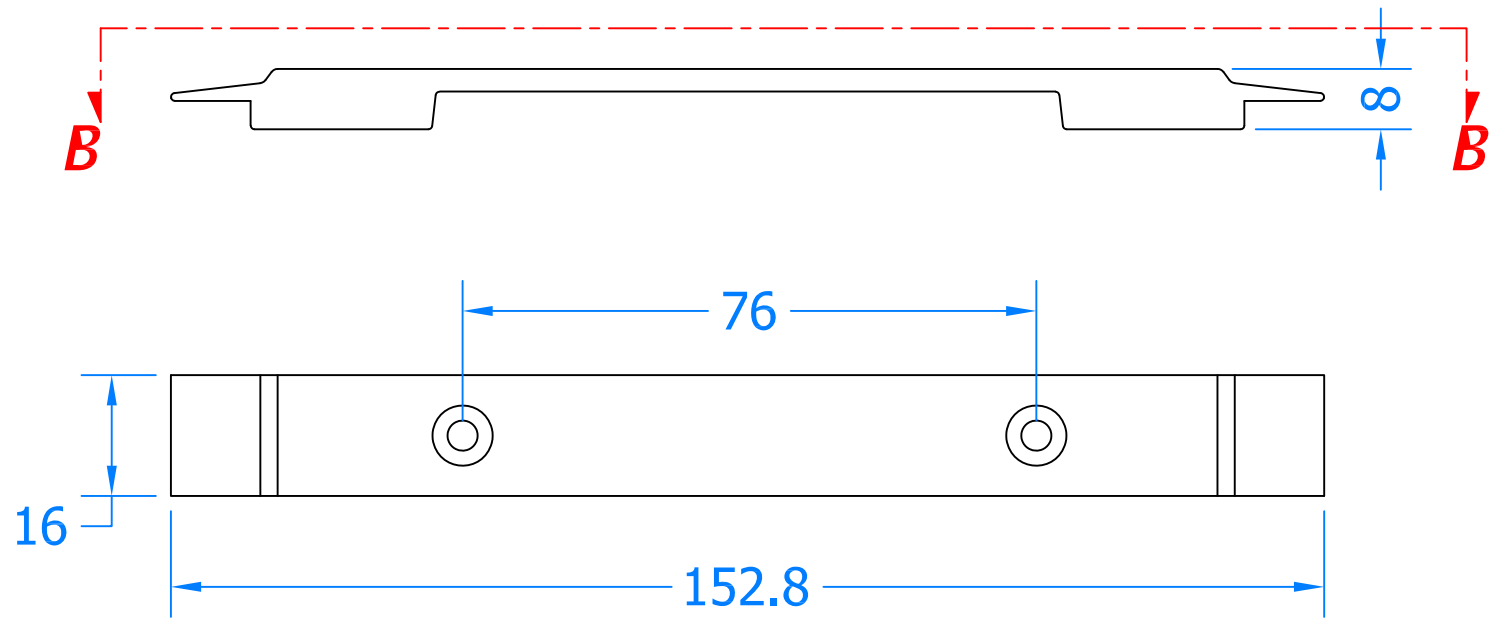
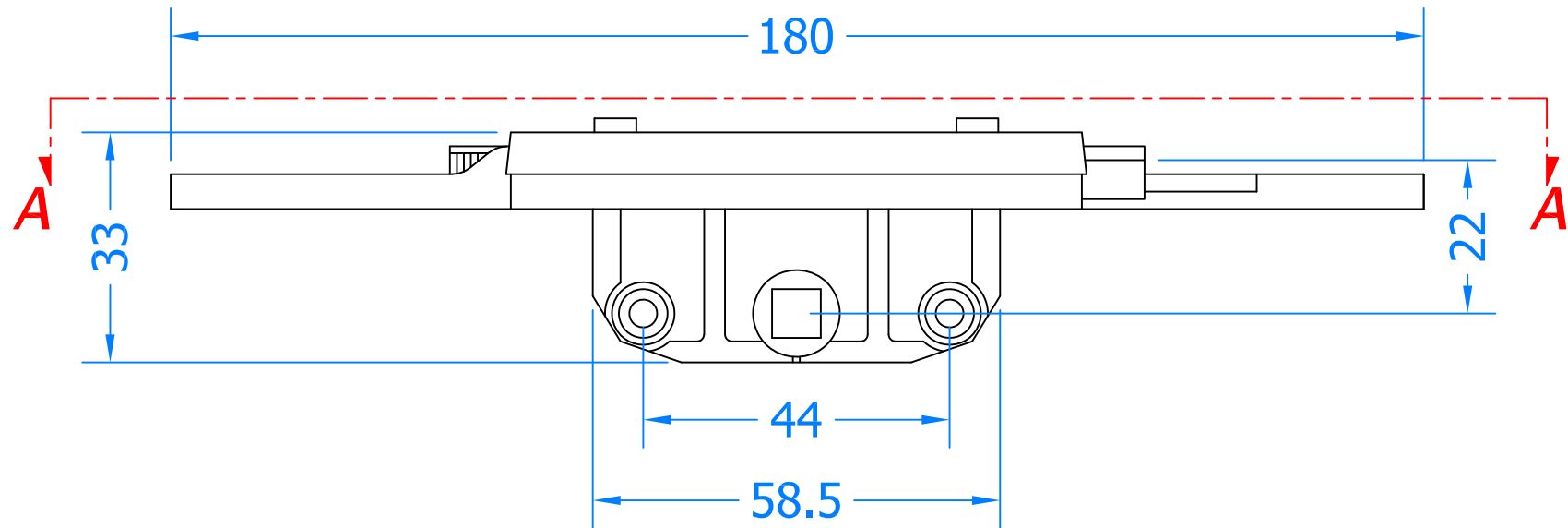


Revision	Description	Drawn	Date
A	Release	PW	14/11/17

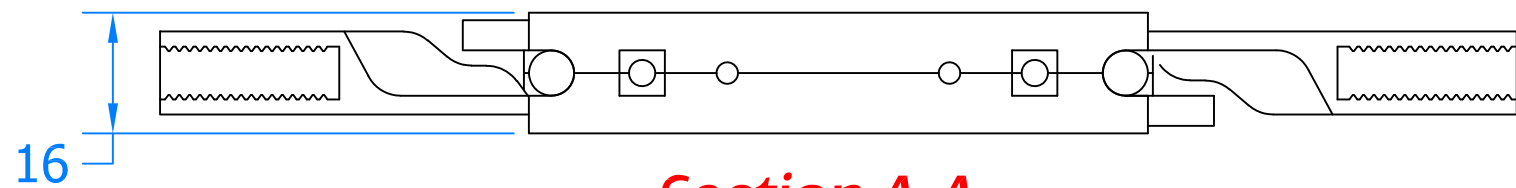


Cover Plate

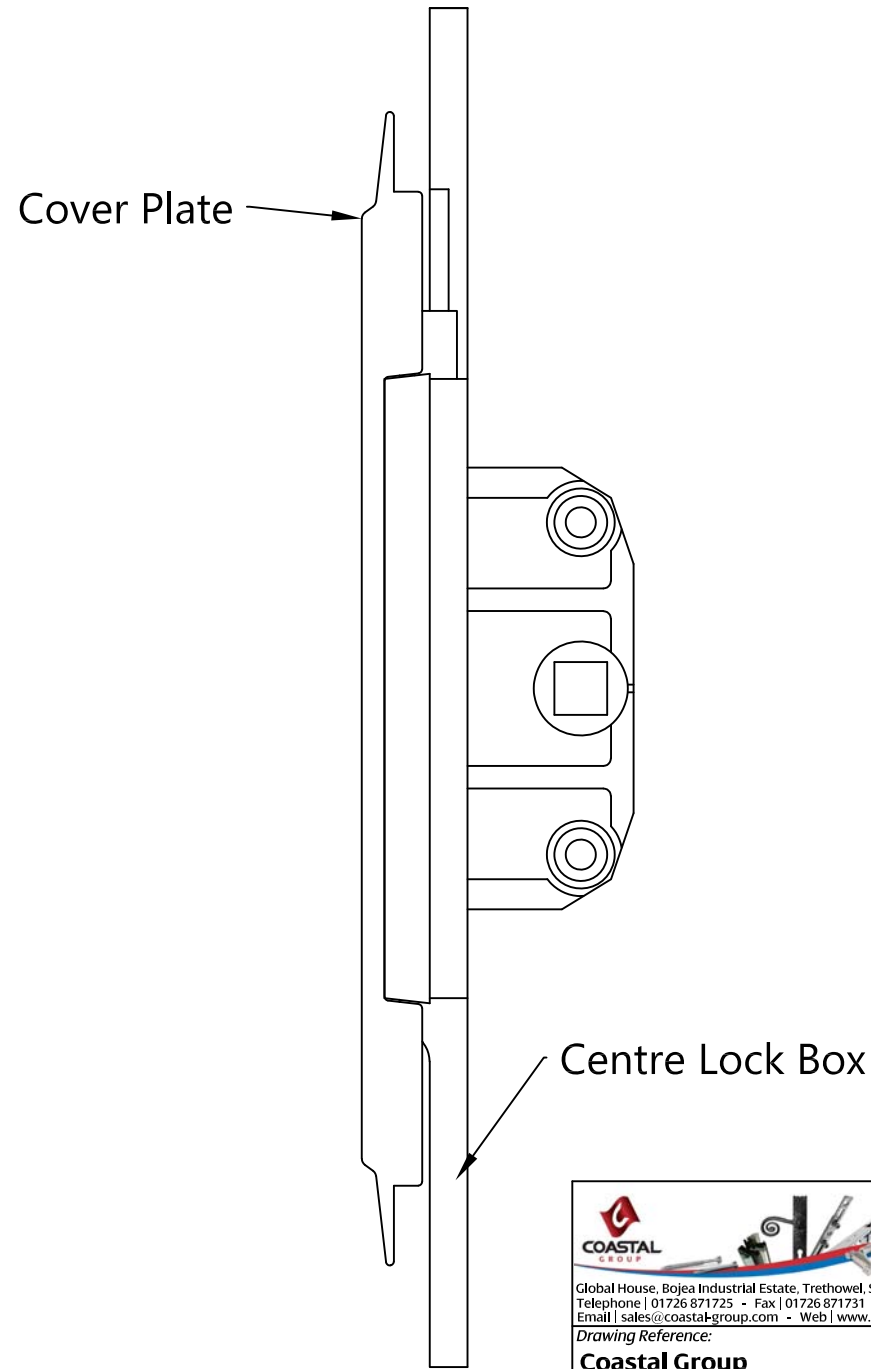
Section B-B



Centre Lock Box



Section A-A



Assembled View

COASTAL GROUP
Innovating & upgrading the style, performance & longevity of external doors & windows globally

Global House, Bojea Industrial Estate, Trethowel, St Austell, PL25 5RJ
Telephone | 01726 871725 - Fax | 01726 871731
Email | sales@coastal-group.com - Web | www.coastal-group.com

Drawing Reference:
Coastal Group
Drawing Title:
EBMB22
Centre Lock Box & Cover Plate
Product Range:
Espagnolette Locks & Keeps
Additional Info: 22mm Backset

Date Drawn: 20/04/2018
Drawn By: Phil Walklett
Part Number: **EBMB22**
File Name: CG-EBME22.dwg
Revision: **A**
Drawing Scale: 1:1@A3
Sheet Number: 1 of 1

THIRD ANGLE PROJECTION

This drawing and specification are the property of Coastal Group, they are issued in strict confidence and shall not be reproduced, copied or used without written permission.