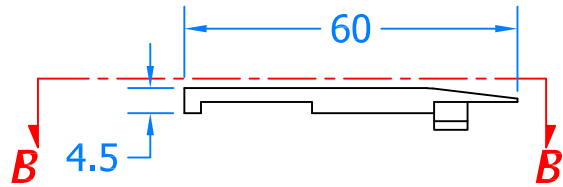
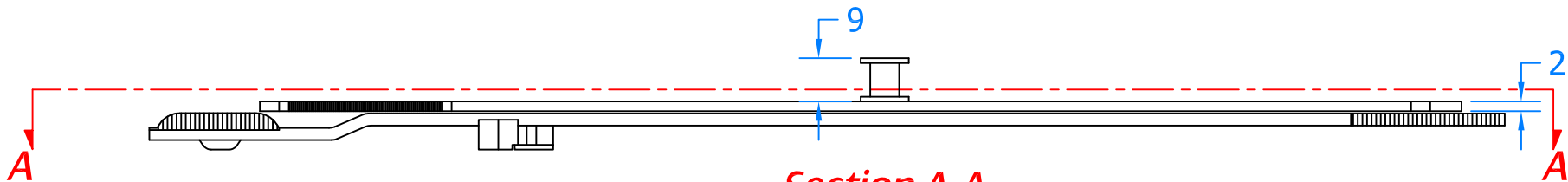
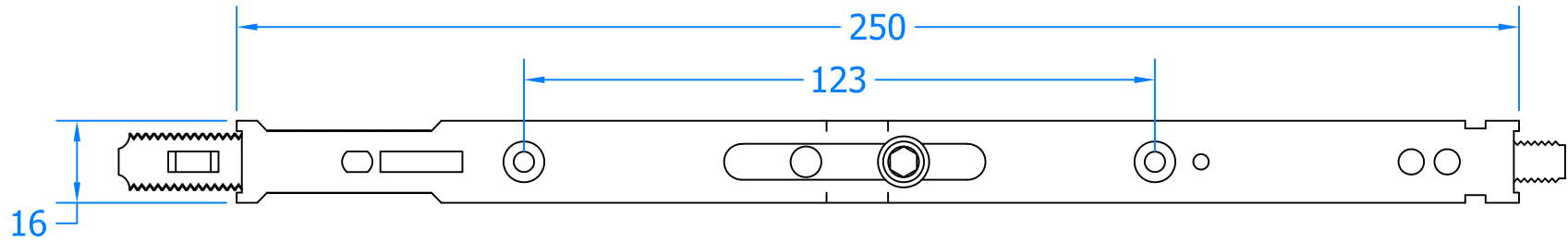


REVISIONS

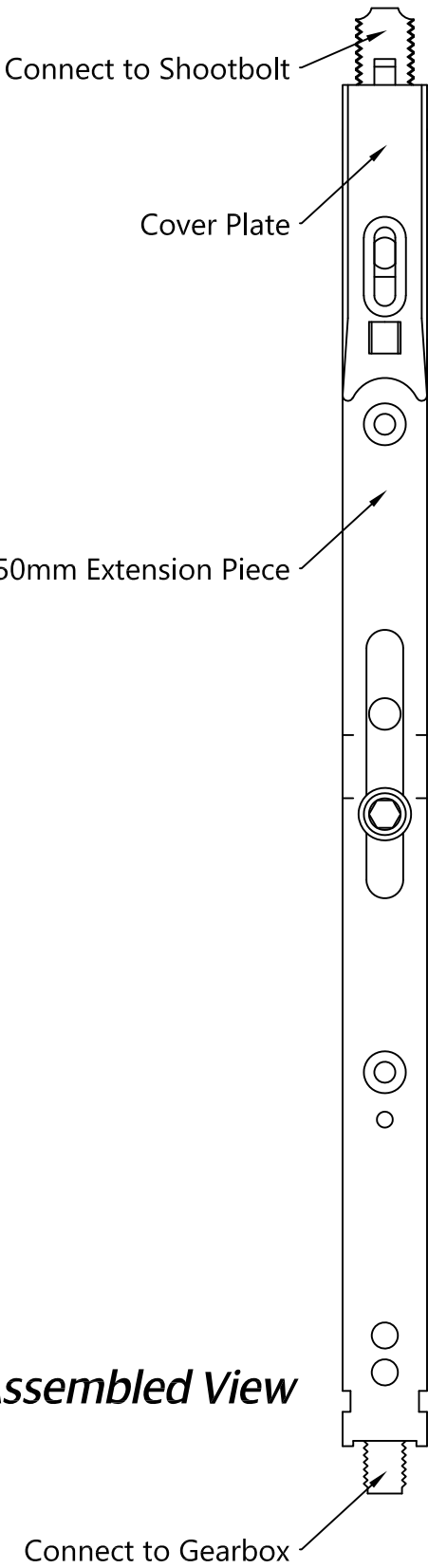
Revision	Description	Drawn	Date
A	Release	PW	20/04/18





Section B-B



Section A-A



Assembled View



Global House, Bojea Industrial Estate, Trethowel, St Austell, PL25 5RJ
Telephone | 01726 871725 - Fax | 01726 871731
Email | sales@coastal-group.com - Web | www.coastal-group.com

Drawing Reference:
Coastal Group
EBM250
Extension Piece with 9mm Cam
Product Range:
Espagnolette Locks & Keeps
Additional Info: Connects to Centre Lock Box & Shootbolt.

Date Drawn:	20/04/2018
Drawn By:	Phil Walklett
Part Number:	EBM250
File Name:	CG-EBM250.dwg
Revision:	A
Drawing Scale:	Not to Scale
Sheet Number:	1 of 1

THIRD ANGLE PROJECTION



This drawing and specification are the property of Coastal Group, they are issued in strict confidence and shall not be reproduced, copied or used without written permission.