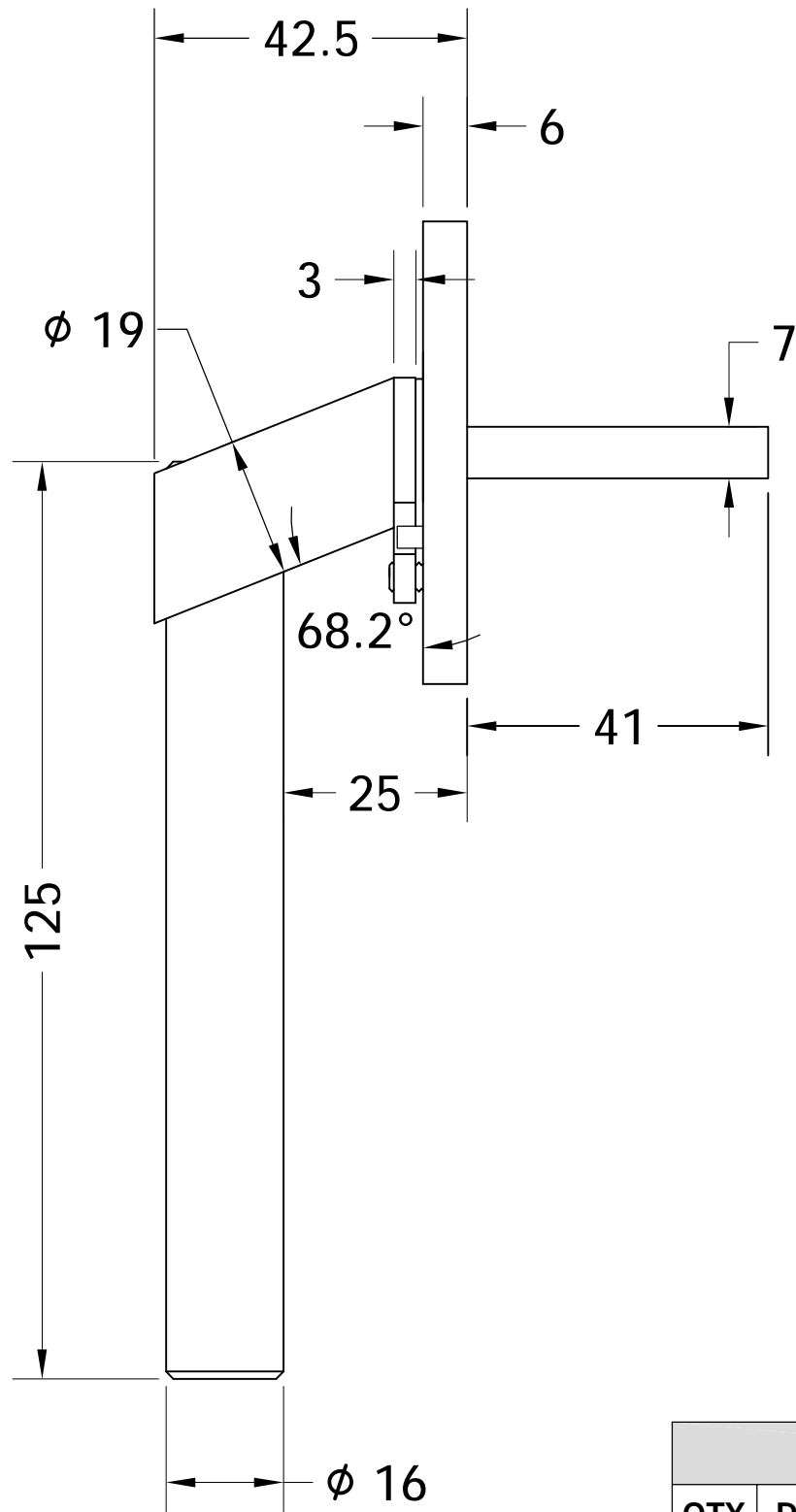
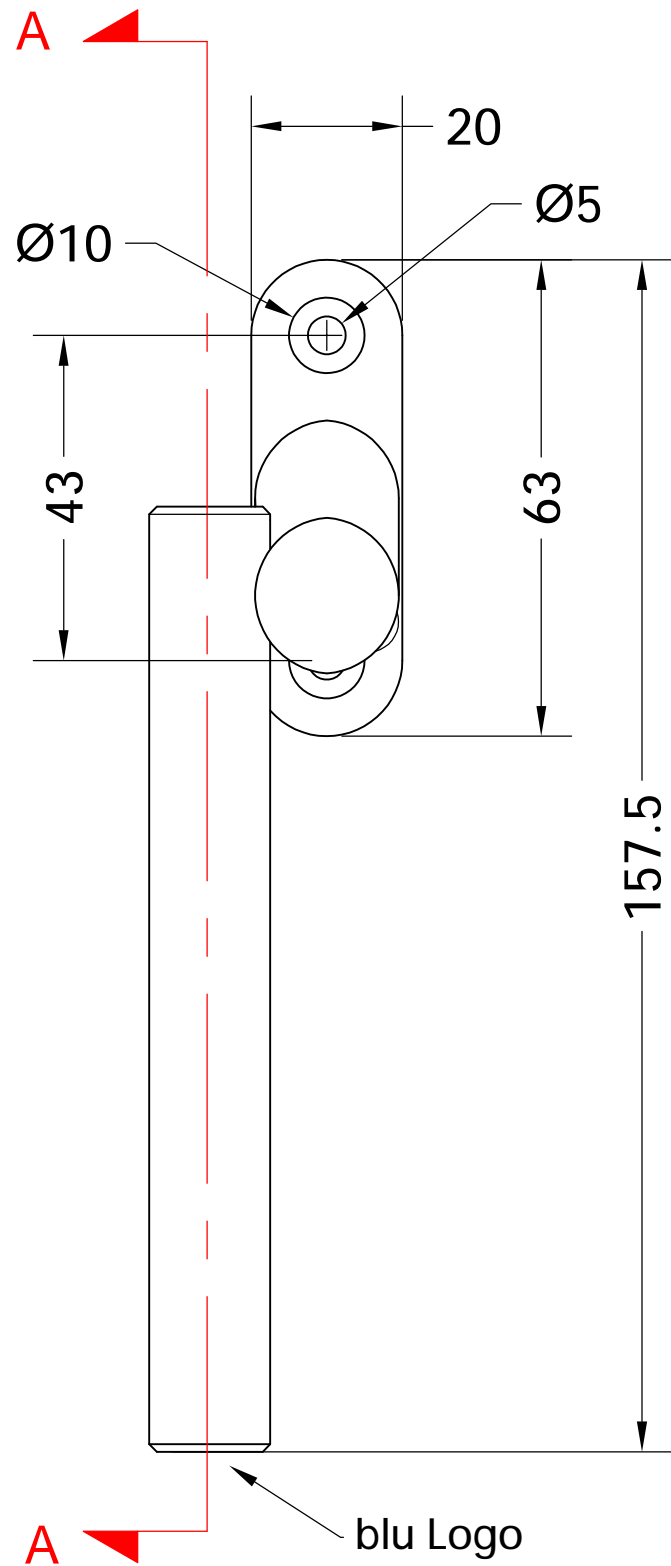
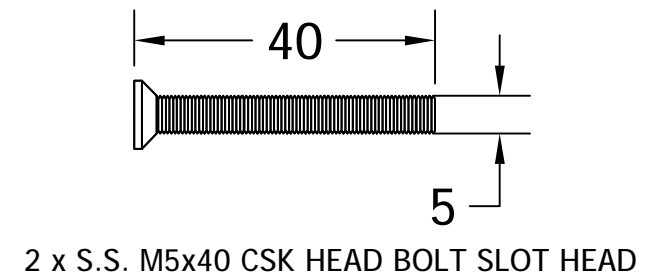
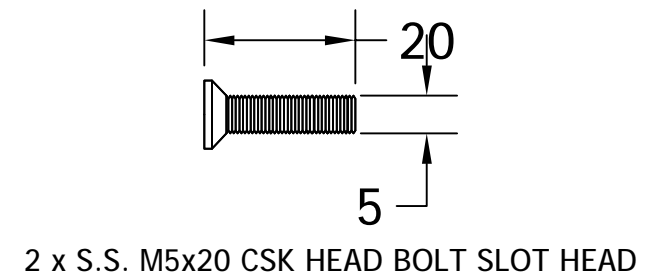


While every attempt has been made to ensure the accuracy and completeness of the information in this document some typographical or technical errors may exist. Blu Performance cannot accept responsibility for customers' losses resulting from the use of this document. Please also note that this drawing / design is subject to change without prior notice in accordance with our policy of continual product development. This drawing / design contains proprietary information that is protected by copyright and is property of Blu Performance. Blu Performance is at the leading edge in joinery hardware, customer care and quality are at the core of everything we do, you can be confident that a call to Blu will be the only call you need for all your joinery hardware needs.

Revision History				
Revision	Description	DRFT	CHK	Date
A	Release.	PW	BD	30/6/16
B	Updated fixing lengths.	PW	BD	4/5/17



Section A-A



WHATS INCLUDED IN THE BOX	
QTY	DESCRIPTION
1	LH OFFSET HANDLE
1	ALLEN KEY
2	M5 X 40 BOLT
2	M5 X 20 BOLT



Global House  
Bojea Industrial Estate  
Trethowel, St Austell  
Cornwall, PL25 5RJ

t | 01726 871025 f | 01726 871731  
e | sales@blu-performance.com  
w | www.blu-performance.com

Customer Reference:

**blu Performance**

Drawing Title:  
**LH Offset Window Espag Handle**

Product Range / Project Reference  
**SST85-LH-316-SSS**

Other Information:

Date Drawn: **04/05/2017**

Drawn By: **Phil Walklett**

Drawing Number: **BP-SST85-LH-316.dwg**

Revision: **B**

THIRD ANGLE PROJECTION

Scale: **1:1 @A3**

Sheet: **1 of 1**

This drawing and specification are the property of Coastal Group, they are issued in strict confidence and shall not be reproduced, copied or used without written permission.