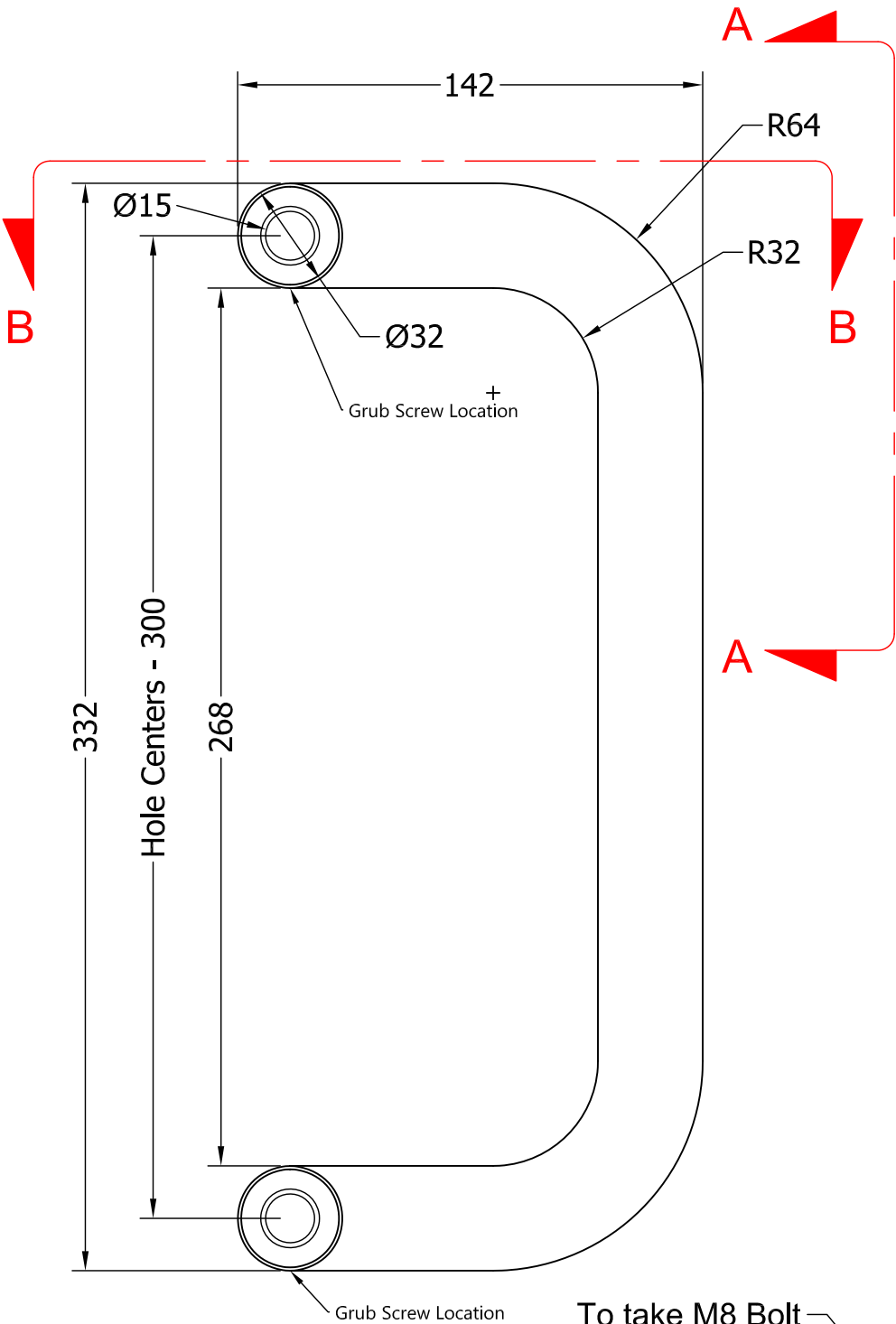


While every attempt has been made to ensure the accuracy and completeness of the information in this document some typographical or technical errors may exist. Blu Performance cannot accept responsibility for customers' losses resulting from the use of this document. Please also note that this drawing / design is subject to change without prior notice in accordance with our policy of continual product development. This drawing / design contains proprietary information that is protected by copyright and is property of Blu Performance. Blu Performance is at the leading edge in joinery hardware, customer care and quality are at the core of everything we do, you can be confident that a call to Blu will be the only call you need for all your joinery hardware needs.

Revision History

Revision	Description	Drawn By	Date	Approved By
A	Released	Phil Walklett	18/04/2017	PW / BD
B	Updated fixing bolt to M8	Phil Walklett	09/04/2019	PW / BD



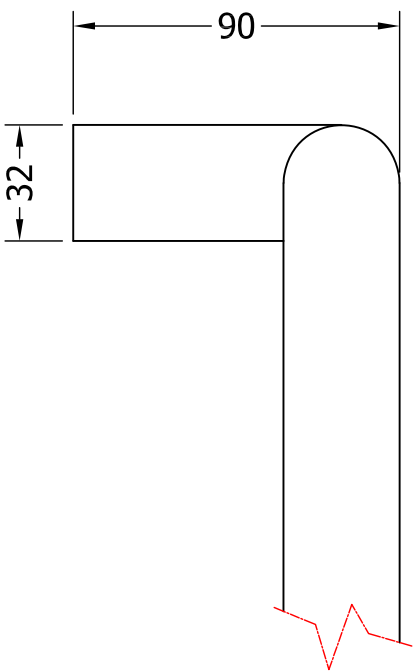
Hole Centers - 300

Grub Screw Location

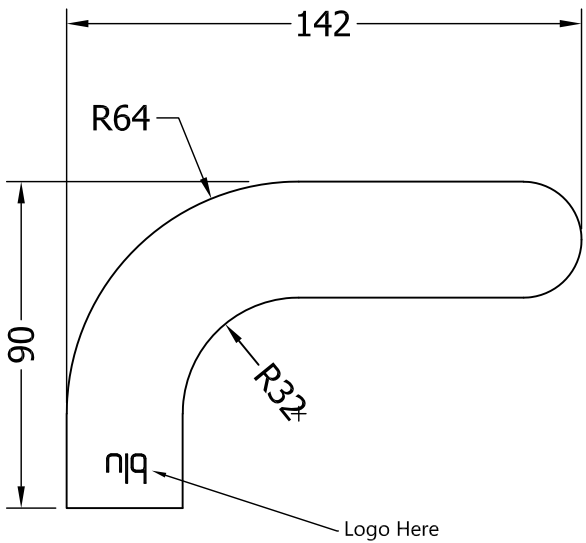
Internal Handle

To take M8 Bolt

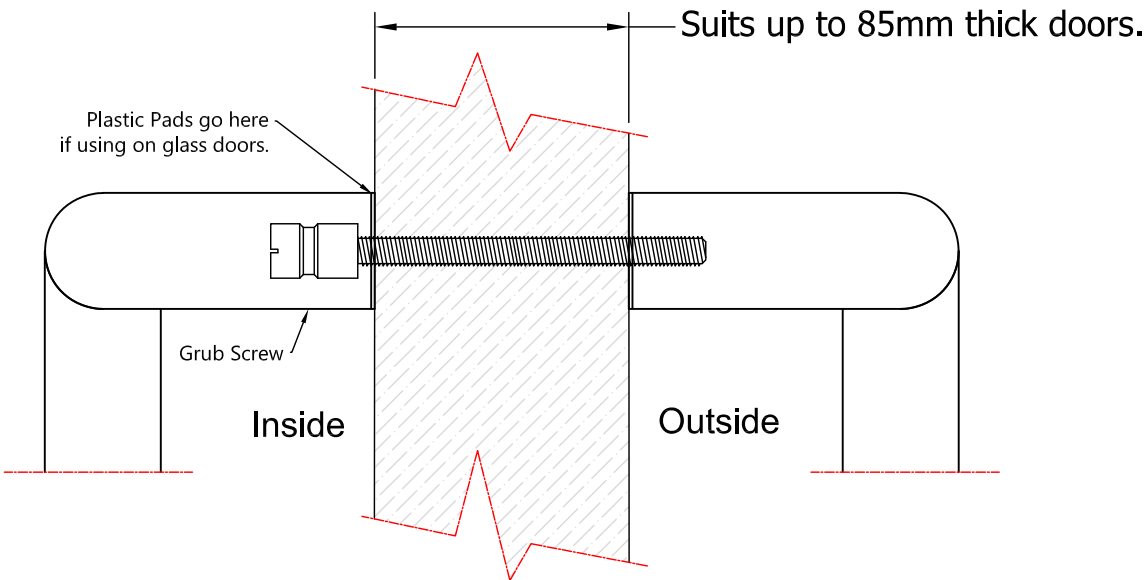
External Handle



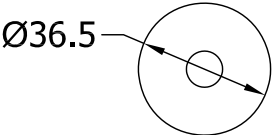
Section A-A
Side View



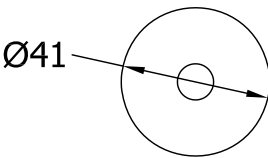
Section B-B
Top View



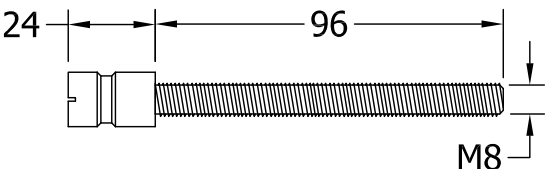
Assembled View (Back to Back Fix)



Glass Protector Pads
Not Required on Timber Doors



Metal Washers



To suit up to 85mm thick doors.
Fixing Bolts



3mm Allen Key

WHAT'S INCLUDED IN THE BOX	
QTY	DESCRIPTION
1	EXTERNAL 'D' PULL HANDLE
1	INTERNAL 'D' PULL HANDLE
4	PLASTIC PADS
2	M8 x 110mm FIXING BOLTS
1	3mm ALLEN KEY



Global House
Bojea Industrial Estate
Trethowel, St Austell
Cornwall, PL25 5RJ

t | 01726 871025 f | 01726 871731
e | sales@blu-performance.com
w | www.blu-performance.com

Customer Reference:

blu Performance

Drawing Title:
**300mm Offset 'D' Pull Handle
Back to Back Fixing**

Product Range / Project Reference
HAB21-300-BB-SSS

Other Information: Suits up to door thickness of 70mm.

Date Drawn: 09/04/2019

Drawn By: Phil Walklett

Drawing Number:
BP-HAB21-300-BB-SSS.dwg

Revision:
B

THIRD ANGLE PROJECTION

Scale: NONE

Sheet: 1 of 1

This drawing and specification are the property of Coastal Group, they are issued in strict confidence and shall not be reproduced, copied or used without written permission.