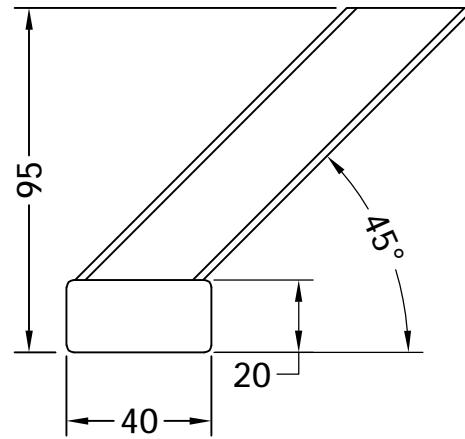
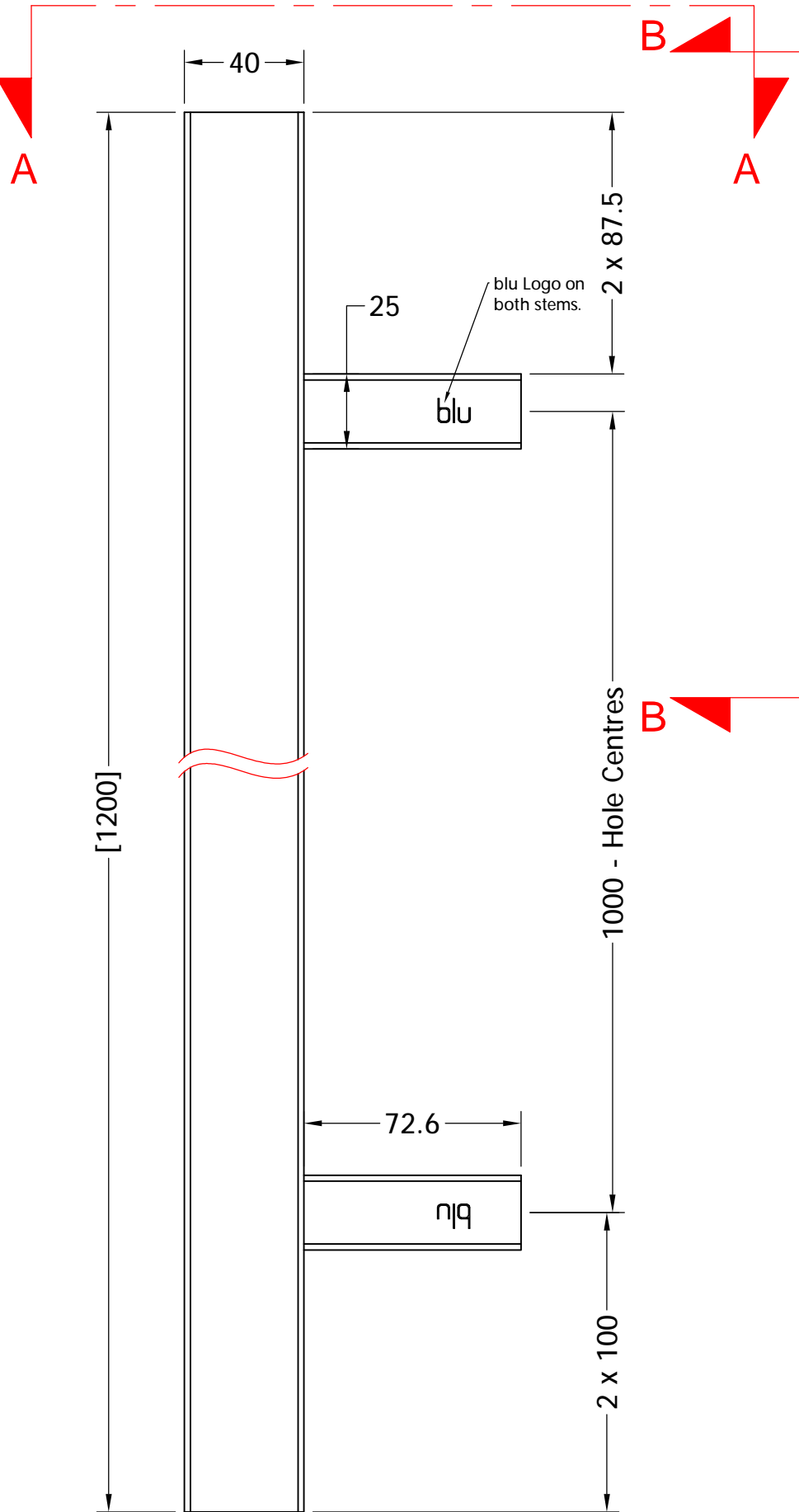


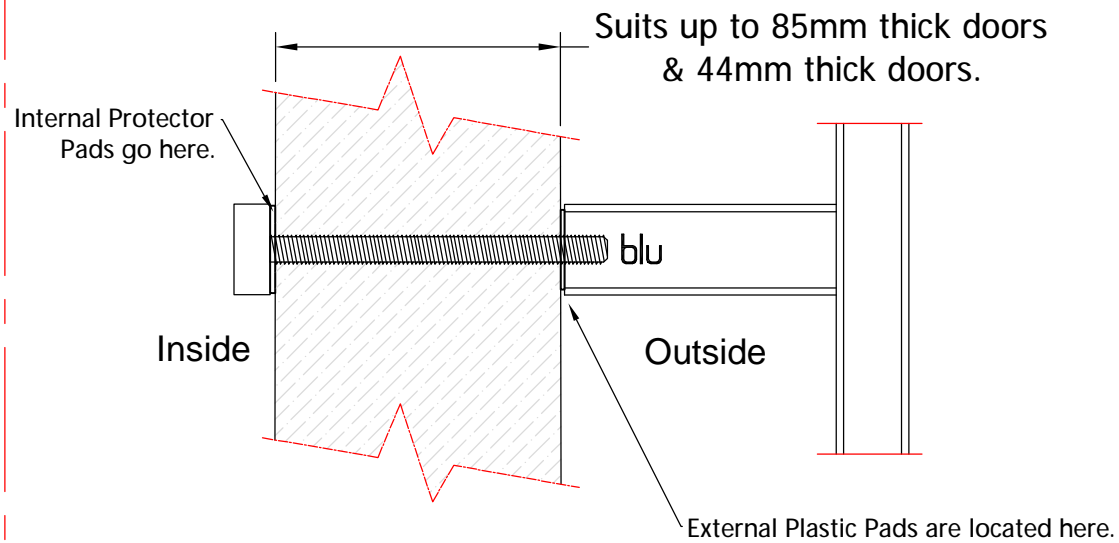
While every attempt has been made to ensure the accuracy and completeness of the information in this document some typographical or technical errors may exist. Blu Performance cannot accept responsibility for customers' losses resulting from the use of this document. Please also note that this drawing / design is subject to change without prior notice in accordance with our policy of continual product development. This drawing / design contains proprietary information that is protected by copyright and is property of Blu Performance. Blu Performance is at the leading edge in joinery hardware, customer care and quality are at the core of everything we do, you can be confident that a call to Blu will be the only call you need for all your joinery hardware needs.



Section A-A



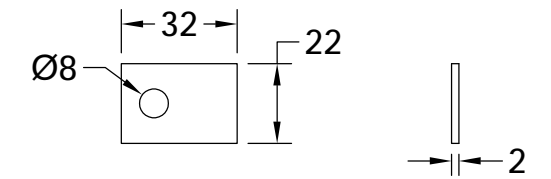
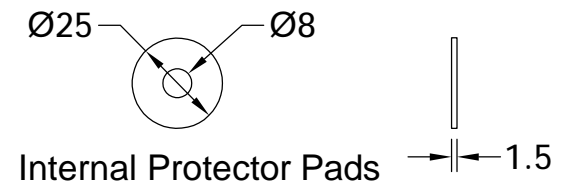
Section B-B



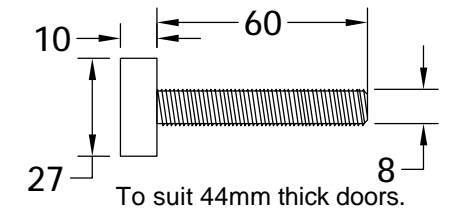
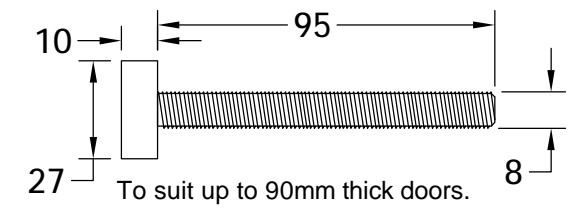
Assembled View (Bolt Fix)

Revision History

Revision	Description	Drawn By	Date
A	Released	PW	8/7/16
B	Added internal protector pads	PW	21/8/17



External Plastic Protector Pads



Fixing Bolts

WHATS INCLUDED IN THE BOX

QTY	DESCRIPTION
1	External Offset Square 'T' Bar Handle
2	Internal Protector Pads
2	External Protector Pads
2	95mm Fixing Bolts
2	60mm Fixing Bolts



Global House
Bojea Industrial Estate
Trethowel, St Austell
Cornwall, PL25 5RJ

t | 01726 871025 f | 01726 871731
e | sales@blu-performance.com
w | www.blu-performance.com

Customer Reference:

blu Performance

Drawing Title:
1200mm Offset Square 'T' Bar Handle Bolt Fixing

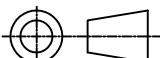
Product Range / Project Reference
HAB7-1200-BF-SSS

Other Information: **Suits up to door thickness of 85mm.**

Date Drawn: **21/08/2017**

Drawn By: **Phil Walklett**

Drawing Number: **BP-HAB7-1200-BF-SSS.dwg** Revision: **B**

THIRD ANGLE PROJECTION
 This drawing and specification are the property of Coastal Group, they are issued in strict confidence and shall not be reproduced, copied or used without written permission.

Scale: **NONE** Sheet: **1 of 1**