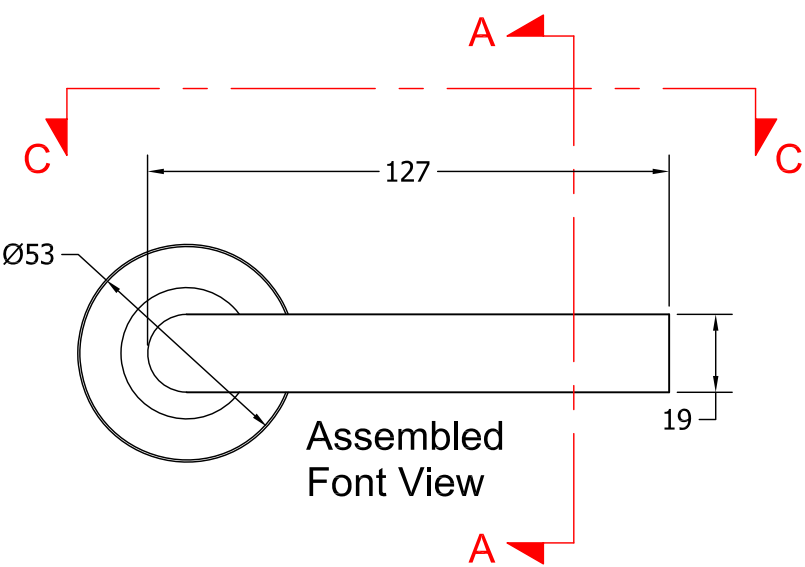
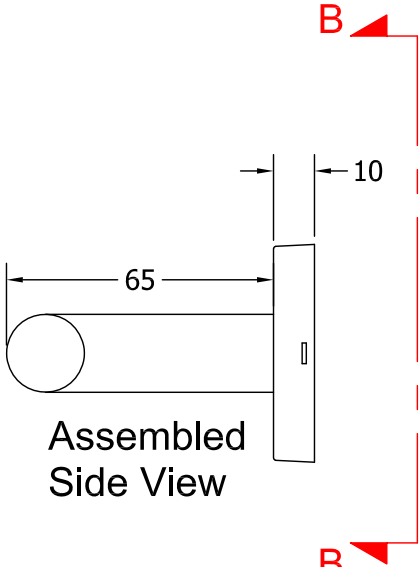


While every attempt has been made to ensure the accuracy and completeness of the information in this document some typographical or technical errors may exist. Blu Performance cannot accept responsibility for customers' losses resulting from the use of this document. Please also note that this drawing / design is subject to change without prior notice in accordance with our policy of continual product development. This drawing / design contains proprietary information that is protected by copyright and is property of Blu Performance. Blu Performance is at the leading edge in joinery hardware, customer care and quality are at the core of everything we do, you can be confident that a call to Blu will be the only call you need for all your joinery hardware needs.

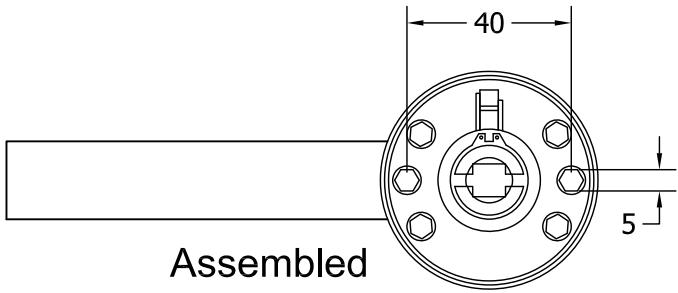
Revision History			
Revision	Description	Drawn By	Date
A	Released.	PW	7/7/16
B	Increased the spindle length to 125mm.	PW	12/4/18



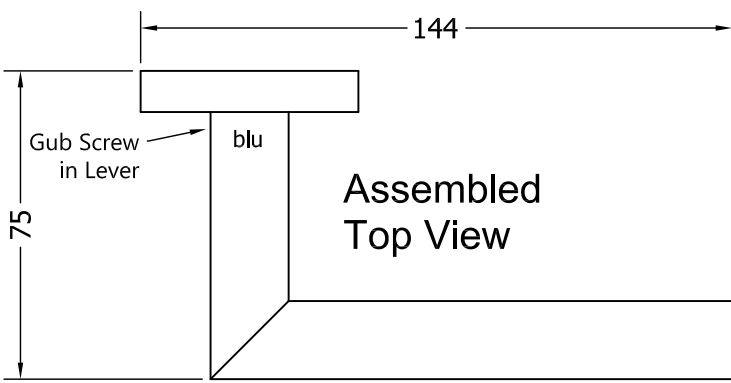
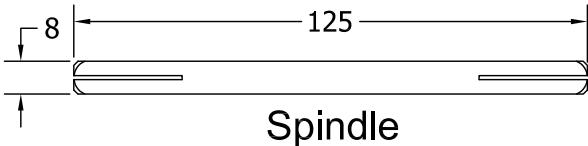
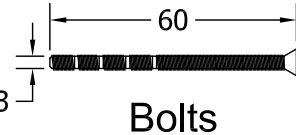
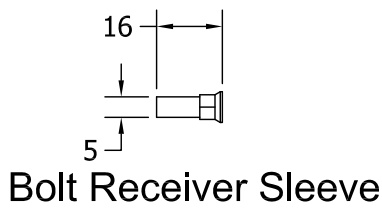
Assembled
Font View



Assembled
Side View

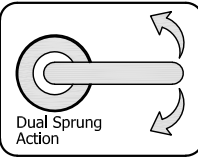
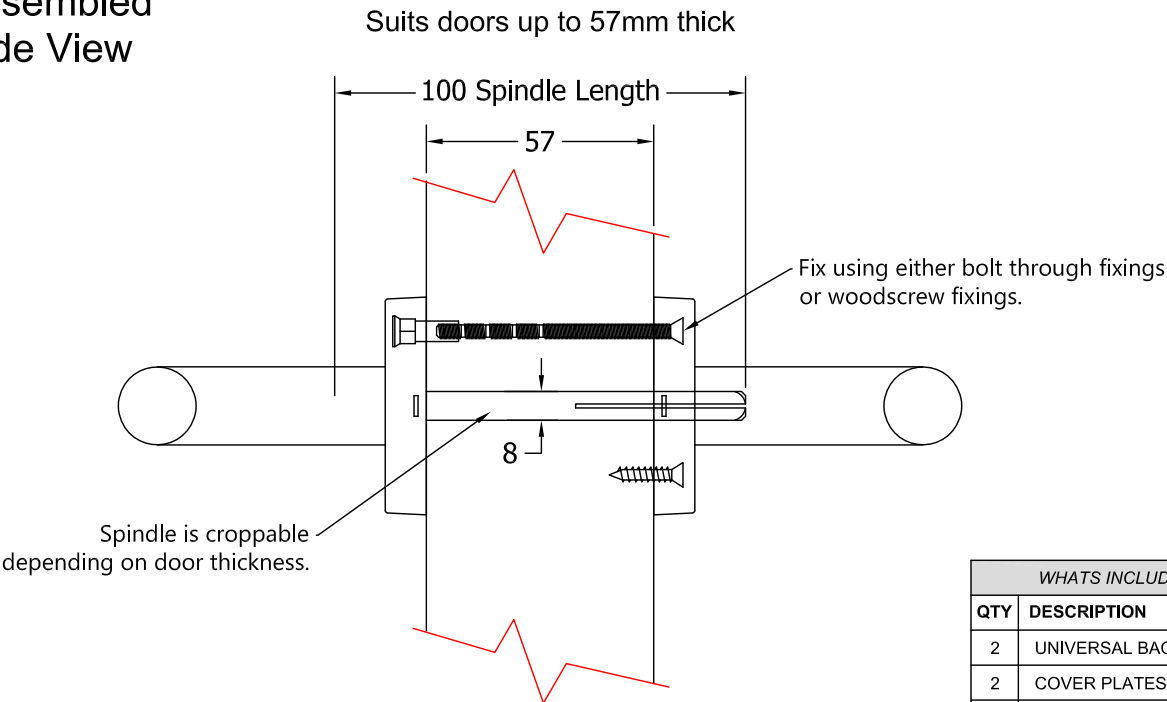


Assembled
Rear View



Assembled
Top View

Assembled
Side View



WHATS INCLUDED IN THE BOX	
QTY	DESCRIPTION
2	UNIVERSAL BACKPLATE & LEVERS
2	COVER PLATES
2	BOLT RECEIVER SLEEVE
2	60mm MACHINE SCREWS
8	20mm WOODSCREWS
1	8x8x125mm SPINDLE
1	3mm GRUB SCREW ALLEN KEY



Global House
Bojea Industrial Estate
Trethowel, St Austell
Cornwall, PL25 5RJ
t | 01726 871025 f | 01726 871731
e | sales@blu-performance.com
w | www.blu-performance.com

Customer Reference:

blu Performance

Drawing Title:
**Mitre Lever on Rose Handle Set
Dual Sprung - 316 Satin Stainless Steel**

Product Range / Project Reference
KM060-DS-316-SSS

Other Information: **Will work on doors up to 57mm thick.**

Date Drawn: **12/04/2018**

Drawn By: **Phil Walklett**

Drawing Number: **BP-KM060-DS-316.dwg**

Revision: **B**

THIRD ANGLE PROJECTION

Scale: **NONE**

Sheet: **1 of 1**