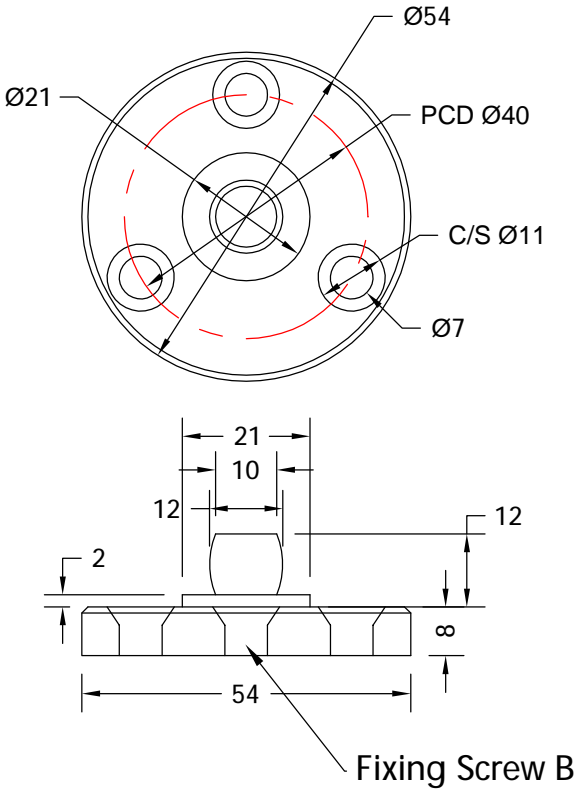
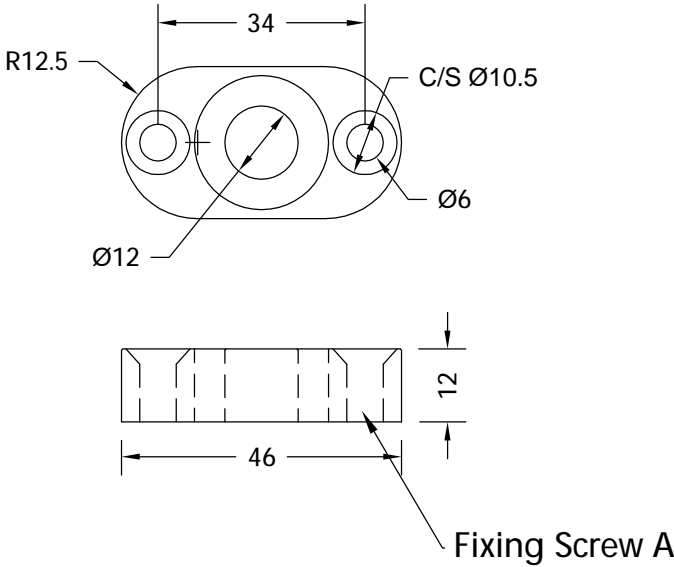


While every attempt has been made to ensure the accuracy and completeness of the information in this document some typographical or technical errors may exist. Coastal Group cannot accept responsibility for customers' losses resulting from the use of this document. Please also note that this drawing / design is subject to change without prior notice in accordance with our policy of continual product development. This drawing / design contains proprietary information that is protected by copyright and is property of Coastal Group. Coastal Group is at the leading edge in joinery hardware, customer care and quality are at the core of everything we do, you can be confident that a call to Coastal will be the only call you need for all your joinery hardware needs.

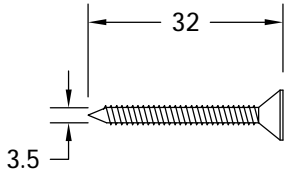
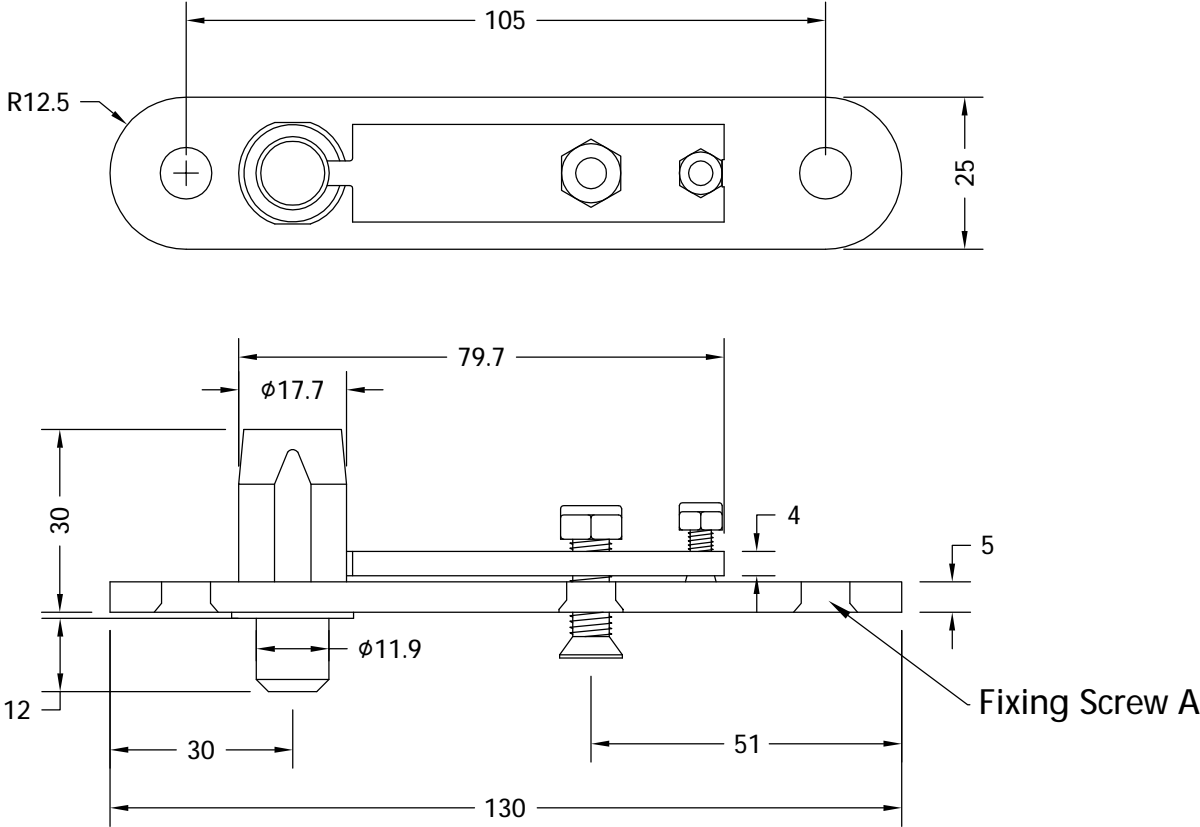
Bottom Pivot Bracket



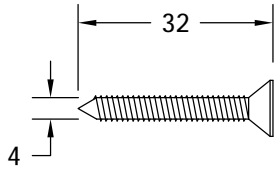
Door Plate Bush



Top Frame Bracket



A - Fixing Screws x 6



B - Fixing Screws x 3



4mm Allen Key

Maximum Door Width 1100mm

WHATS INCLUDED IN THE BOX

QTY	DESCRIPTION
1	BOTTOM PIVOT BRACKET
1	BOLT RECEIVER SLEEVES
2	DOOR PLATE BUSH
6	32 X 3.5mm WOOD SCREWS
3	32 X 4mm WOOD SCREWS
1	4mm ALLEN KEY

Global House
Bojea Industrial Estate
Trethowel, St Austell
Cornwall, PL25 5RJ
t | 01726 871025 f | 01726 871731
e | sales@coastal-group.com
w | www.coastal-group.com

Customer Reference:
Coastal Group

Drawing Title:
**Door Pivot Set - Heavy Duty
Mounted Lower Pivot - Radius Corners**
Product Range / Project Reference
H131-401-SSS

Other Information: Maximum Adjusted Door Weight 120Kgs

Date Drawn: 23/08/2016

Drawn By: Phil Walklett

Drawing Number: CG-H131-401-SSS.dwg Revision: A

THIRD ANGLE PROJECTION
This drawing and specification are the property of Coastal Group, they are issued in strict confidence and shall not be reproduced, copied or used without written permission.

Scale: NONE Sheet: 1 of 1