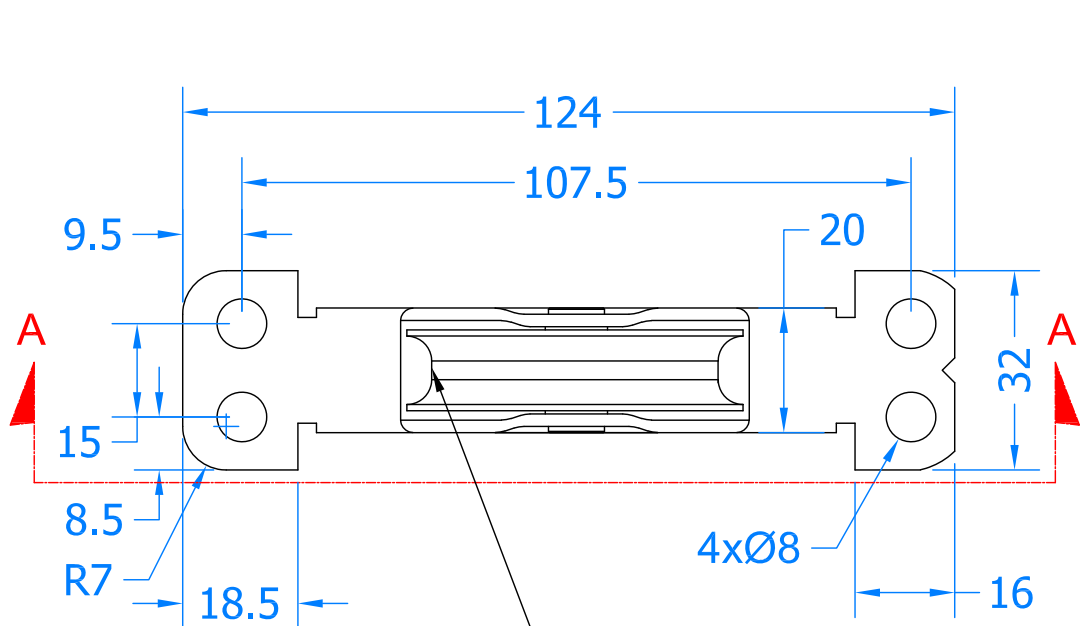
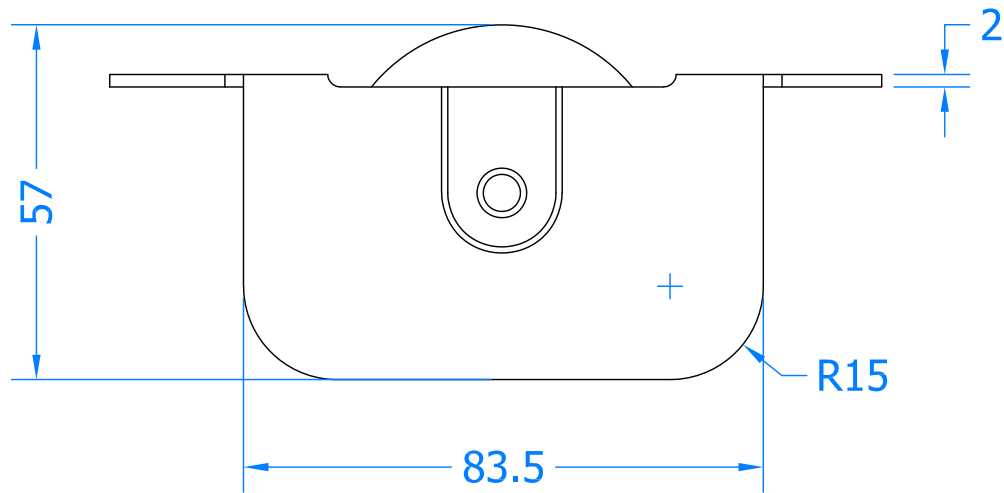


# Bumper (Optional & Supplied Separately)

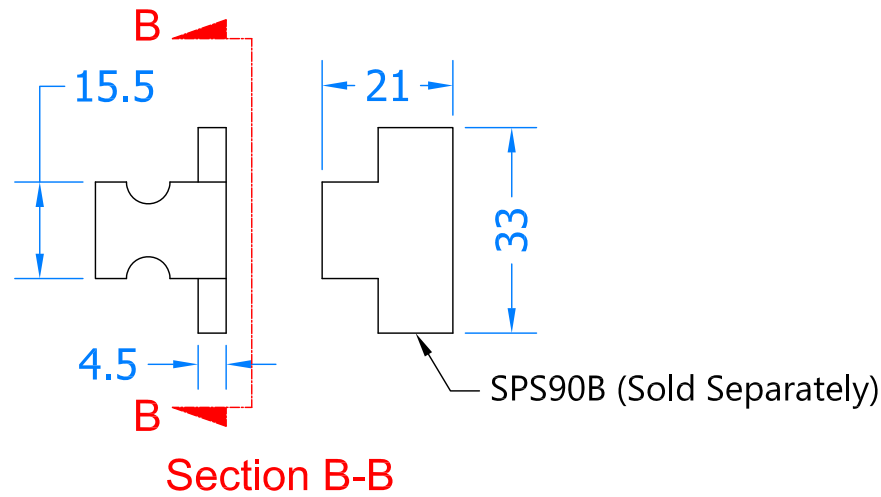
Revision History			
Revision	Description	Drawn By	Date
A	Released	PW	9/12/16
B	Bumper is now separate item SPS90B	PW	3/4/18



Round wheel designed for sash cord.



Section A-A




## Bumper Assembly

Bumper SPS90B  
(Optional &  
Supplied Separately)

SPS90RW

SPS90P  
Pulley Cover Plate  
(Supplied Separately)

The bumper is designed to stop the sash from hitting the head, it acts as a stop bumper, this is an optional component and is sold separately. This fits behind the top fixing points as shown above.

			
Global House, Bojia Industrial Estate, Trethowel, St Austell, PL25 5RJ		Telephone   01726 871724 - fax   01726 871731	
email   sales@coastal-group.com - web   www.coastal-group.com		Drawing Reference:	
Coastal Group		Drawing Title:	
SPS90RW		Product Range:	
Pulley with Radius Wheel		Additional Info:	
Sliding Sash Pulley		Bumper SPS90B is sold Separately	
Date Drawn:		03/04/2018	
Drawn By:		Phil Walklett	
Part Number:		SPS90-RW	
File Name:		CG-SPS90-RW.dwg	
Revision:		B	
Drawing Scale:		NONE	
Sheet Number:		1 of 1	
THIRD ANGLE PROJECTION		This drawing and specification are the property of Coastal Group, they are issued in strict confidence and shall not be reproduced, copied or used without written permission.	