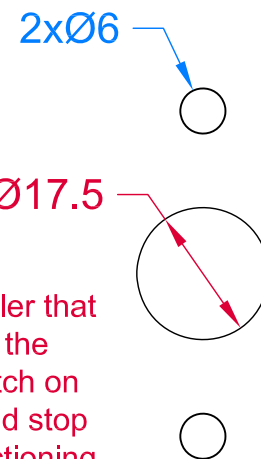
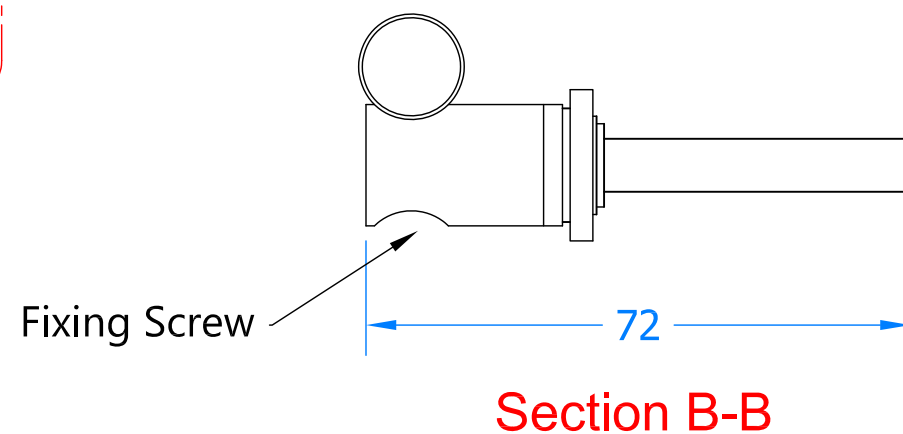
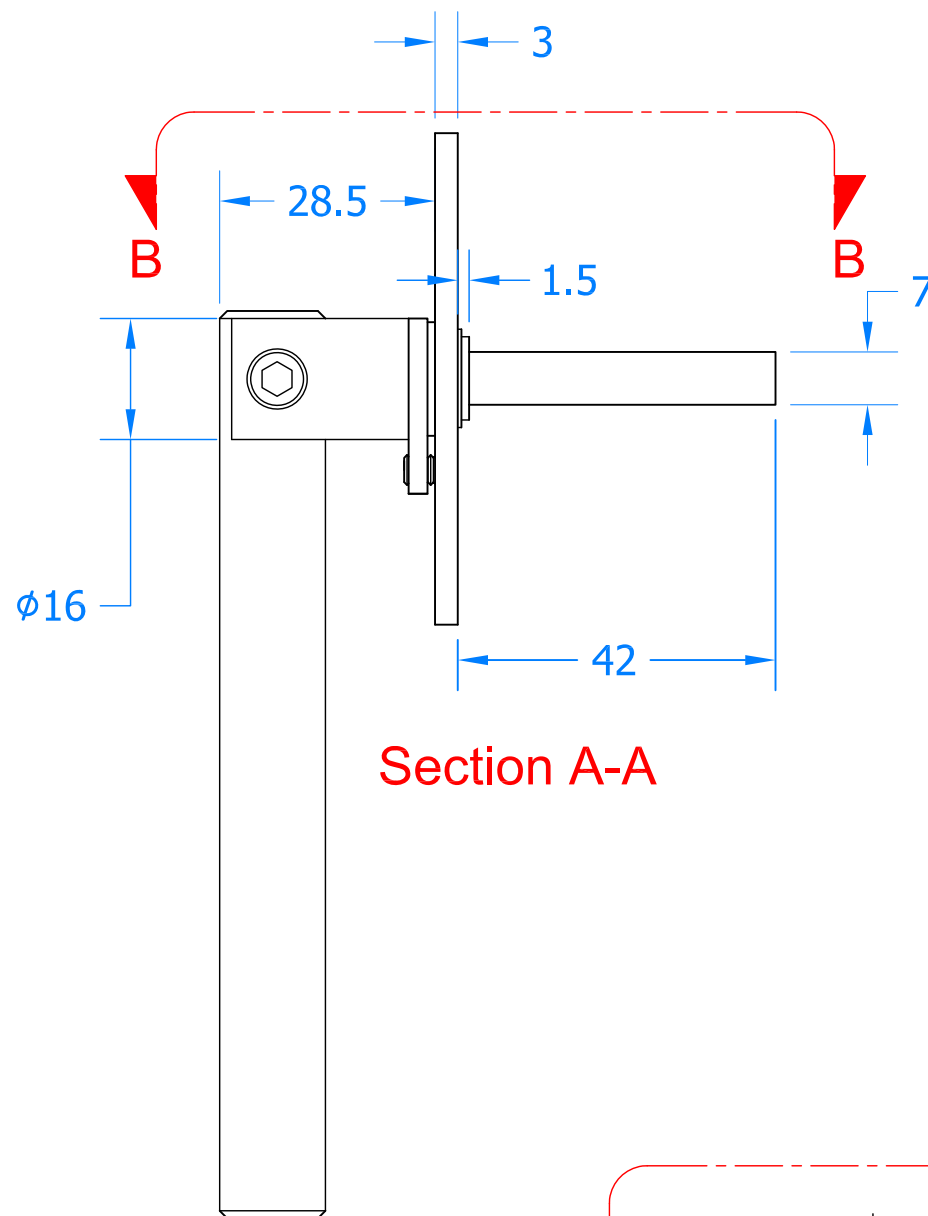
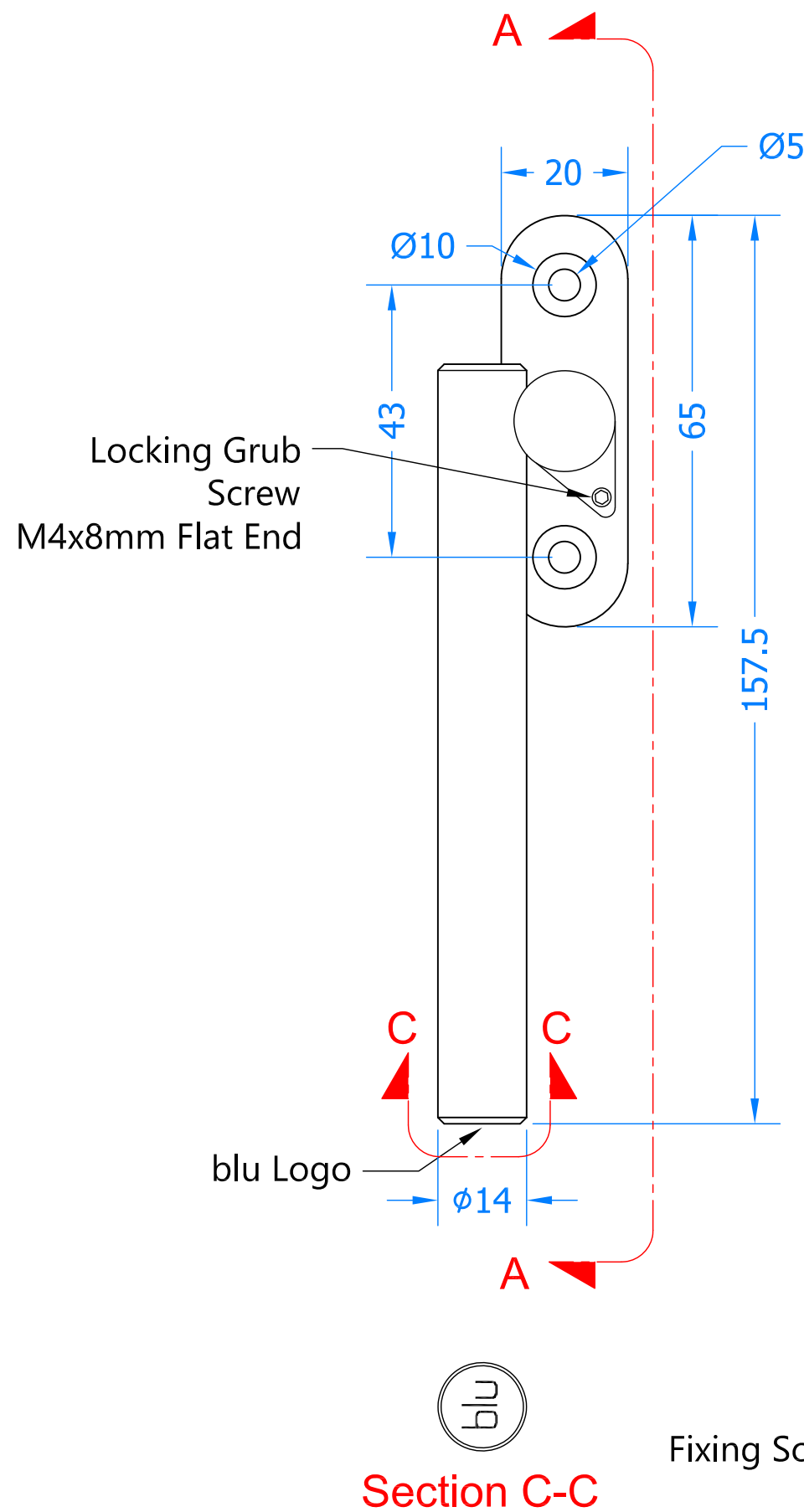


Left Hand shown, Right Hand Opposite

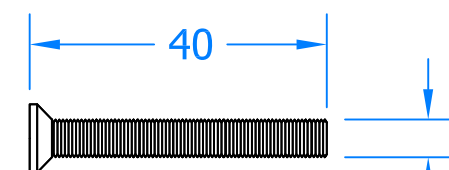


*Do not go any smaller than dimension shown or the handle circlip will catch on the window and could stop the handle from functioning correctly.

Hole Prep

Revision History

Revision	Description	DRFT	CHK	Date
A	Release	PW	BD	5/7/16
B	Added hole prep notes	PW	BD	04.04.19



M5 x 40 BOLT



2mm ALLEN KEY

WHATS INCLUDED IN THE BOX

QTY	DESCRIPTION
1	Offset Handle
1	2mm Allen Key
2	M5 X 40 Machine Screw



Global House
Bojea Industrial Estate
Trethowel, St Austell
Cornwall, PL25 5RJ
t | 01726 871724
f | 01726 871731
sales@blu-performance.com
www.blu-performance.com

Drawing Reference:	blu™ Performance
Drawing Title:	SST81 Locking Window Espagnolette Handle
Product Range:	Window Handles
Additional Info:	LH Shown, RH Opposite 316 Marine Grade Stainless Steel
Date Drawn:	04.04.19
Drawn By:	Phil Walklett
Part Number:	SST81-316
File Name:	BP-SST81-316.dwg
Revision:	B
Drawing Scale:	1:1@A3
Sheet Number:	1 of 1



THIRD ANGLE PROJECTION
This drawing and specification are the property of blu Performance, they are issued in strict confidence and shall not be reproduced, copied or used without written permission.