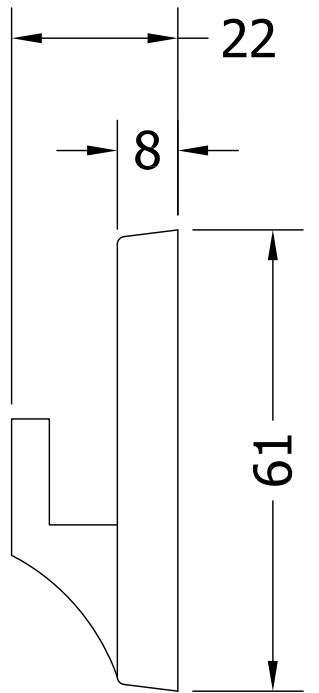
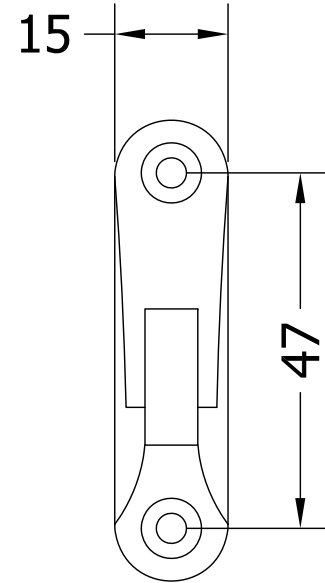
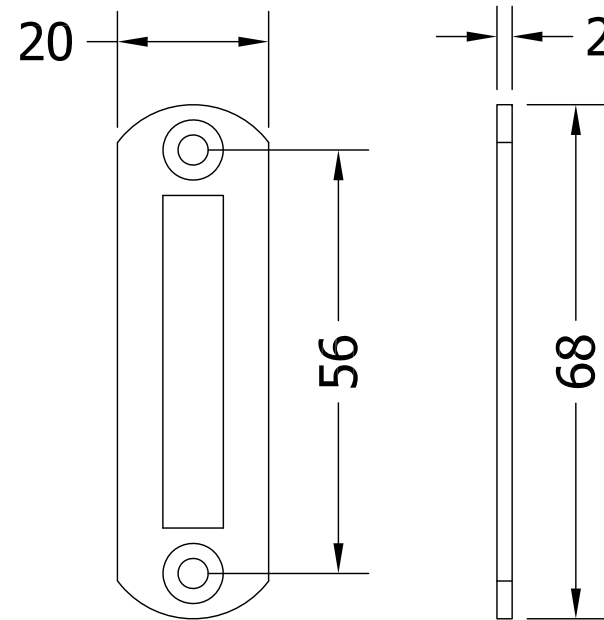
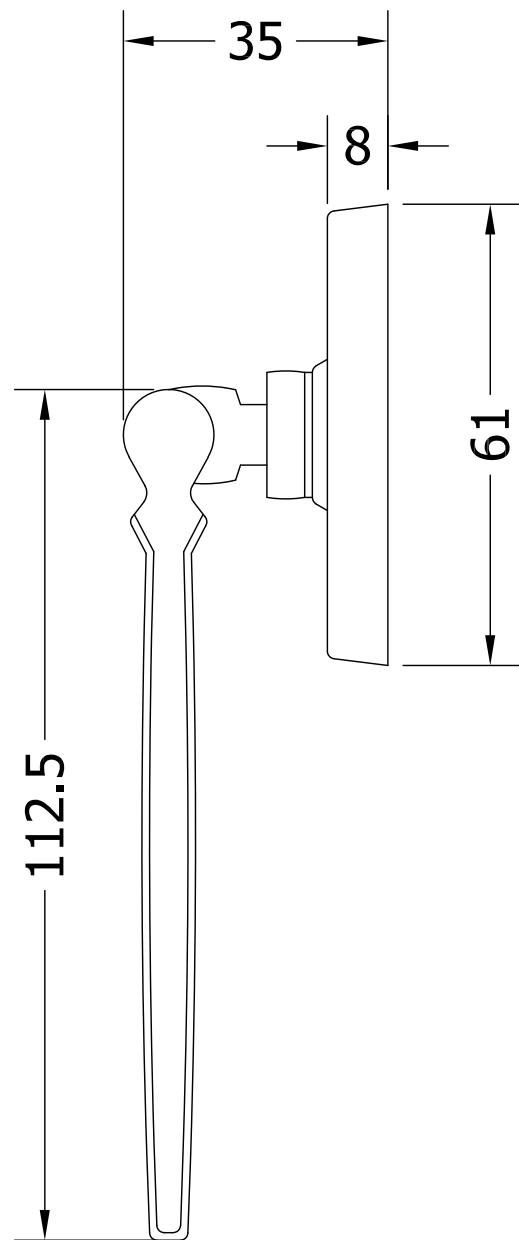
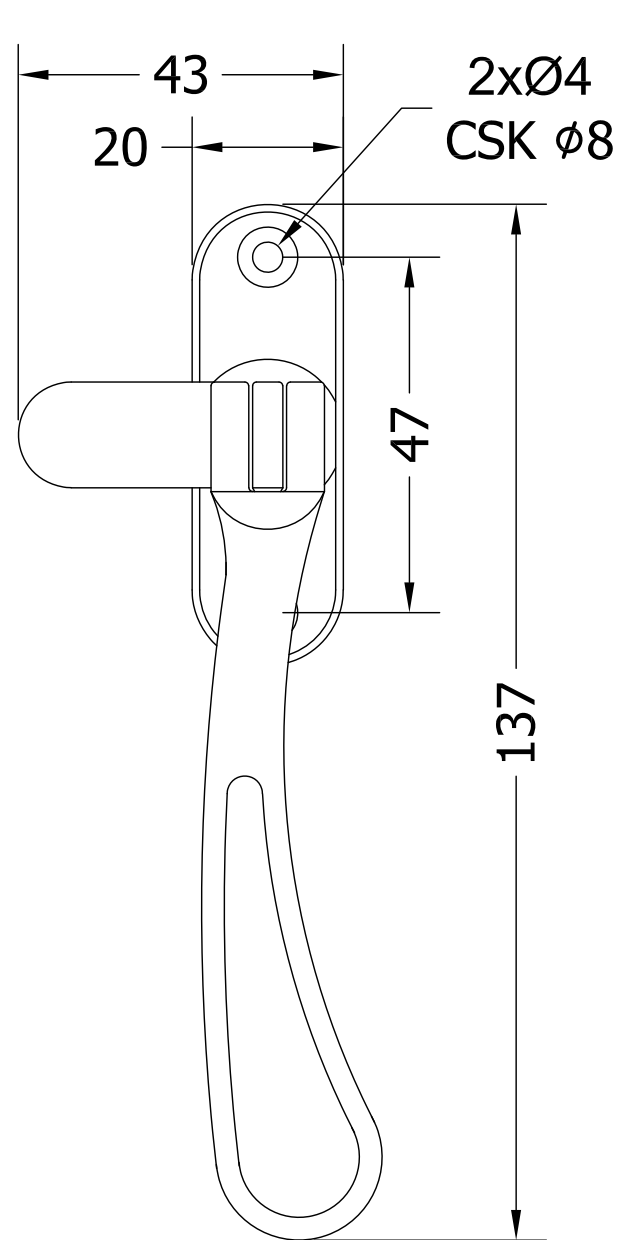


| REVISIONS | | | |
|-----------|-------------|-------|---------|
| Revision | Description | Drawn | Date |
| A | Release | PW | 24/1/18 |



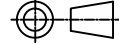


6 x Solid Brass
Woodscrews

1 x Steel
Woodscrews

This product is supplied with solid brass woodscrews and one steel screw, the steel screw is intended to be used to cut the thread prior to fixing the door furniture with the brass woodscrews.

We recommend the drilling of a small pilot hole into the solid wood doors to avoid sheering the brass screw heads. The use of power screwdrivers is not recommended as these can damage the finish or sheer off the brass screw head by slippage or excessive tightening of the screw.

| | |
|--|---------------|
|   | |
| Global House, Bojea Industrial Estate, Trethowel, St Austell, PL25 5RJ Telephone 01726 871725 - Fax 01726 871731 Email sales@coastal-group.com - Web www.coastal-group.com | |
| Drawing Reference: | |
| Coastal Group | |
| Drawing Title: | |
| CC8 - Traditional Spoon End Casement Window Fastener | |
| Product Range: | |
| Window Hardware | |
| Additional Info: Universal - Non Handed | |
| Date Drawn: | 24/01/2018 |
| Drawn By: | Phil Walklett |
| Part Number: | CC8 |
| File Name: | CG-CC8.deg |
| Revision: | A |
| Drawing Scale: | 1:1@A3 |
| Sheet Number: | 1 of 1 |
| THIRD ANGLE PROJECTION | |
|  | |
| This drawing and specification are the property of Coastal Group, they are issued in strict confidence and shall not be reproduced, copied or used without written permission. | |