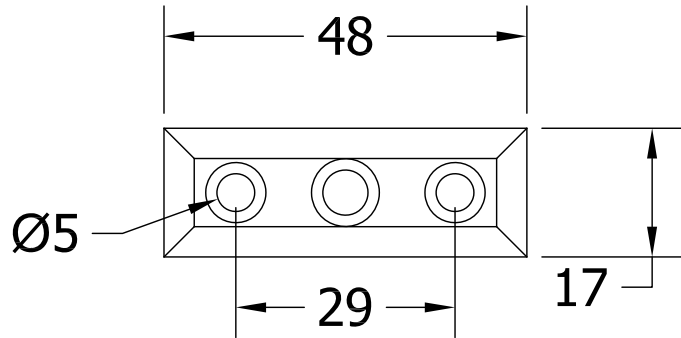
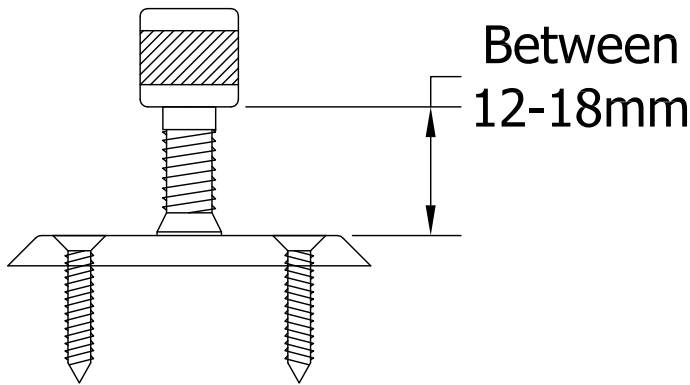
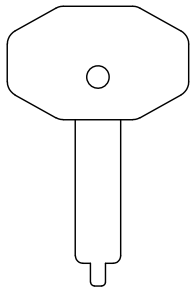
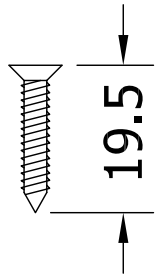


REVISIONS

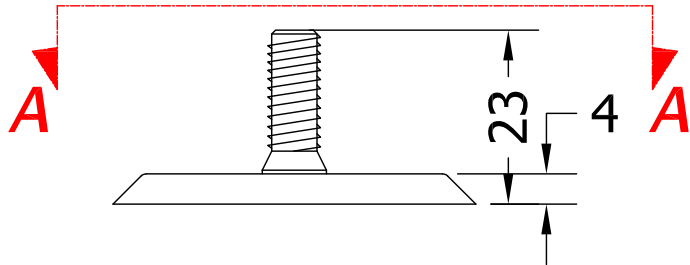
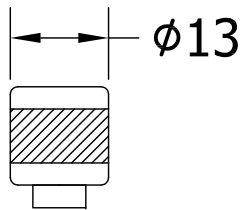
Revision	Description	Drawn	Date
A	Release	PW	30/1/18



Section A-A



Assembled View





Global House, Bojea Industrial Estate, Trethowel, St Austell, PL25 5RJ
Telephone | 01726 871725 - Fax | 01726 871731
Email | sales@coastal-group.com - Web | www.coastal-group.com

Drawing Reference:
Coastal Group

Drawing Title:
BA116 Antique Casement Stay Pin

Product Range:
Window Furniture

Additional Info: Security Locking Pin

Date Drawn: 30/01/2018

Drawn By: Phil Walklett

Part Number: BA116

File Name: CO-BA116.dwg

Revision: A

Drawing Scale: 1:1@A3

Sheet Number: 1 of 1

THIRD ANGLE PROJECTION

This drawing and specification are the property of Coastal Group, they are issued in strict confidence and shall not be reproduced, copied or used without written permission.