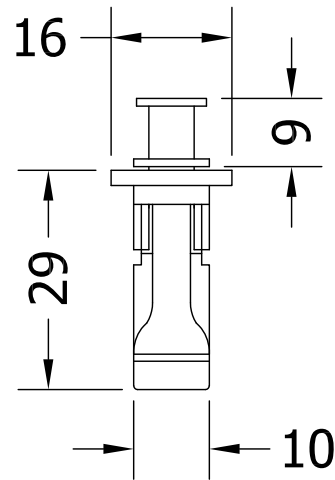
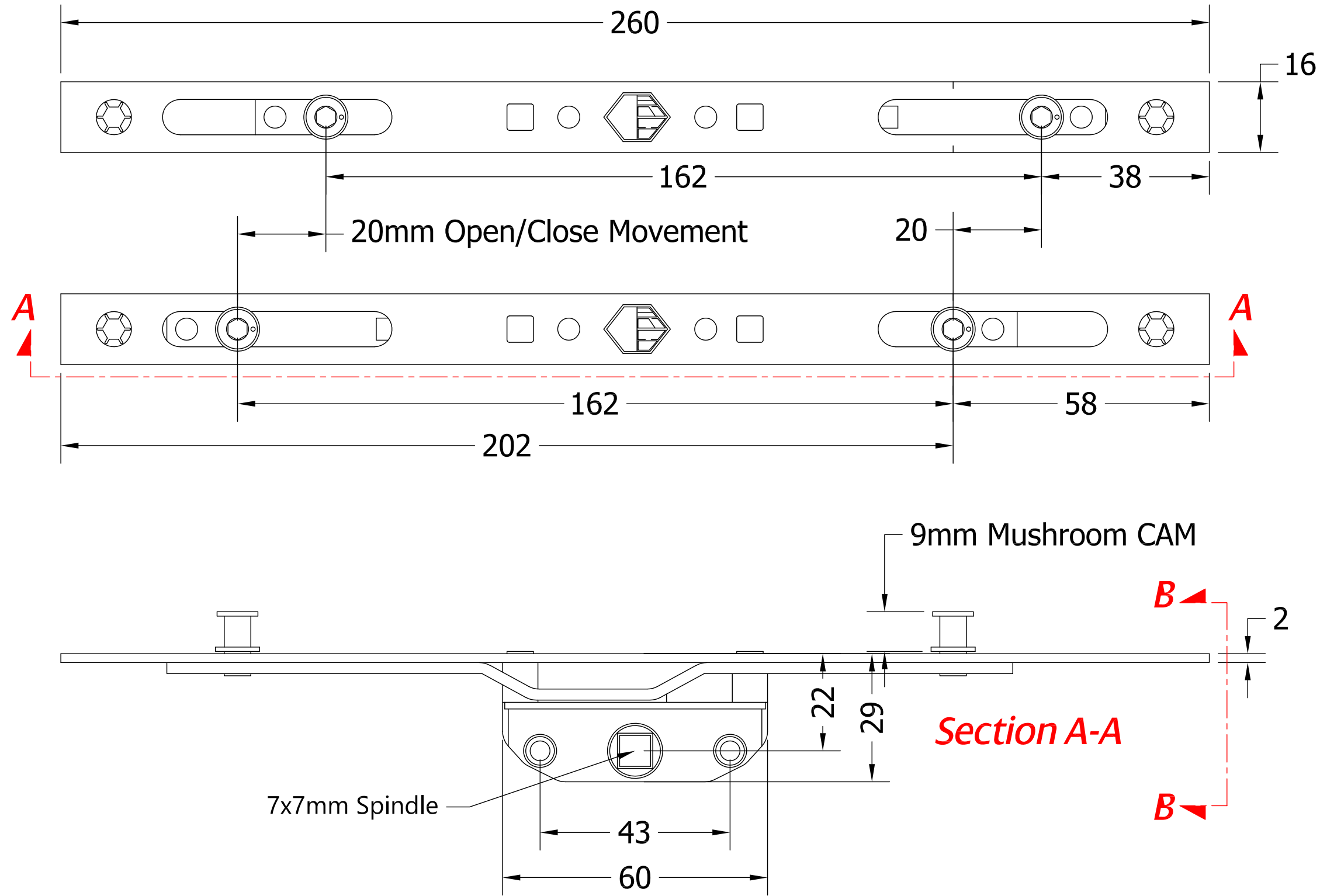


# REVISIONS

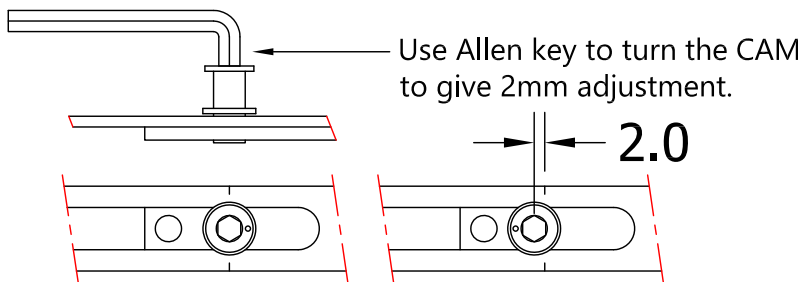
Revision	Description	Drawn	Date
A	Release	PW	30/1/18



Section B-B

Section A-A

## Adjustment Guide



**COASTAL GROUP**  
Global House, Bojea Industrial Estate, Trethowel, St Austell, PL25 5RJ  
Telephone | 01726 871725 - Fax | 01726 871731  
Email | sales@coastal-group.com - Web | www.coastal-group.com

**Drawing Reference:**  
**Coastal Group**  
**EBS260**  
**Silver Espagnolette Bolt**

**Product Range:**  
**Casement Window Locks**

**Additional Info:** 2 Locking Points  
22mm Backset

**Date Drawn:** 30/01/2018  
**Drawn By:** Phil Walklett  
**Part Number:** EBS260  
**File Name:** CG-EBS260.dwg  
**Revision:** A  
**Drawing Scale:** 1:1@A3  
**Sheet Number:** 1 of 1

**THIRD ANGLE PROJECTION**  
This drawing and specification are the property of Coastal Group, they are issued in strict confidence and shall not be reproduced, copied or used without written permission.