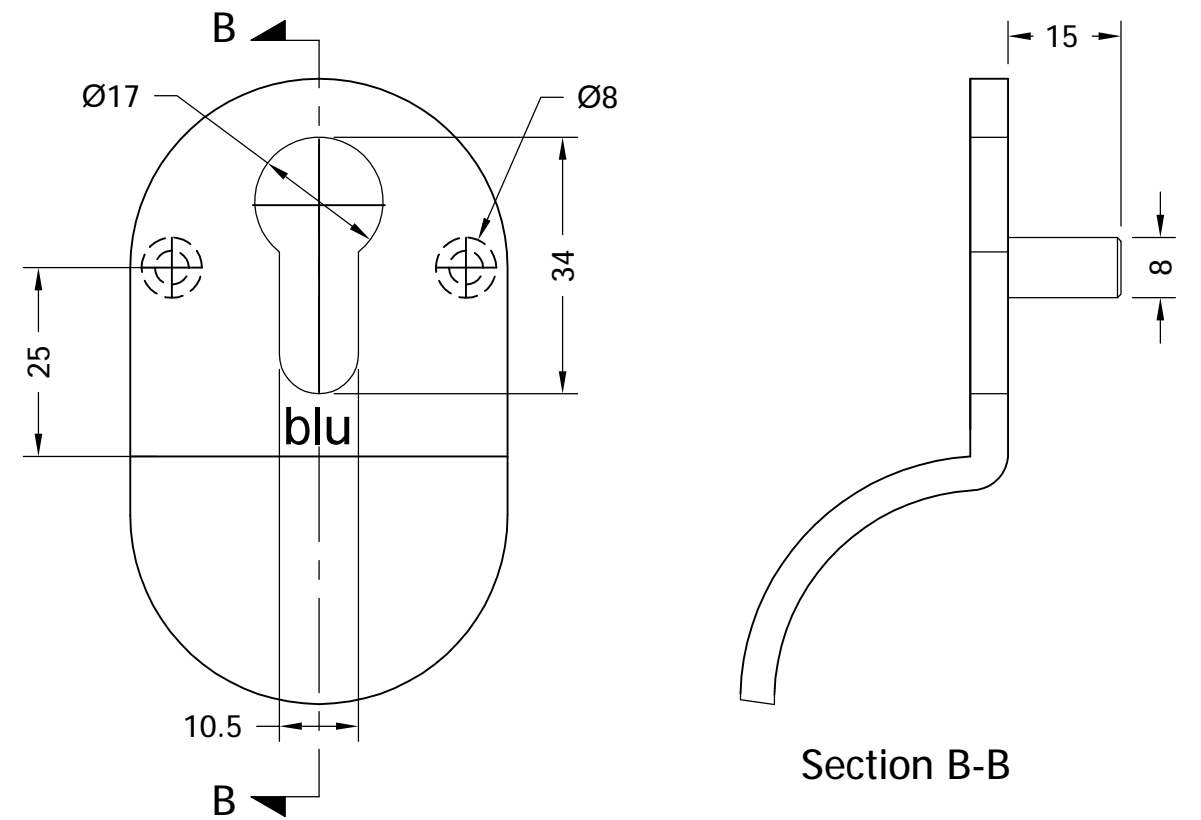
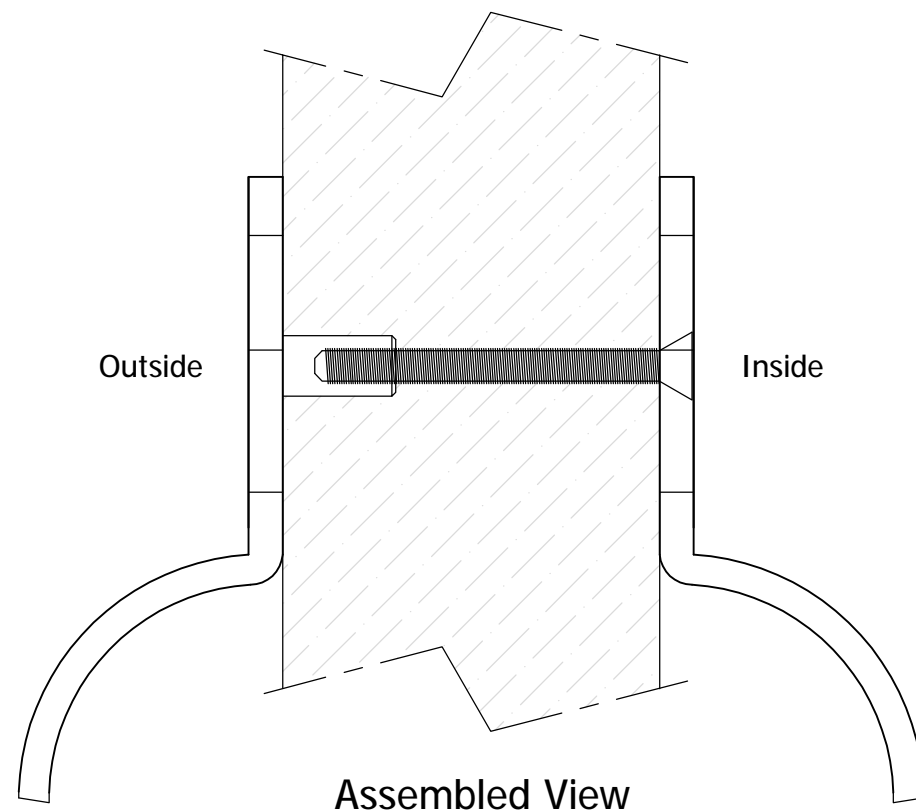
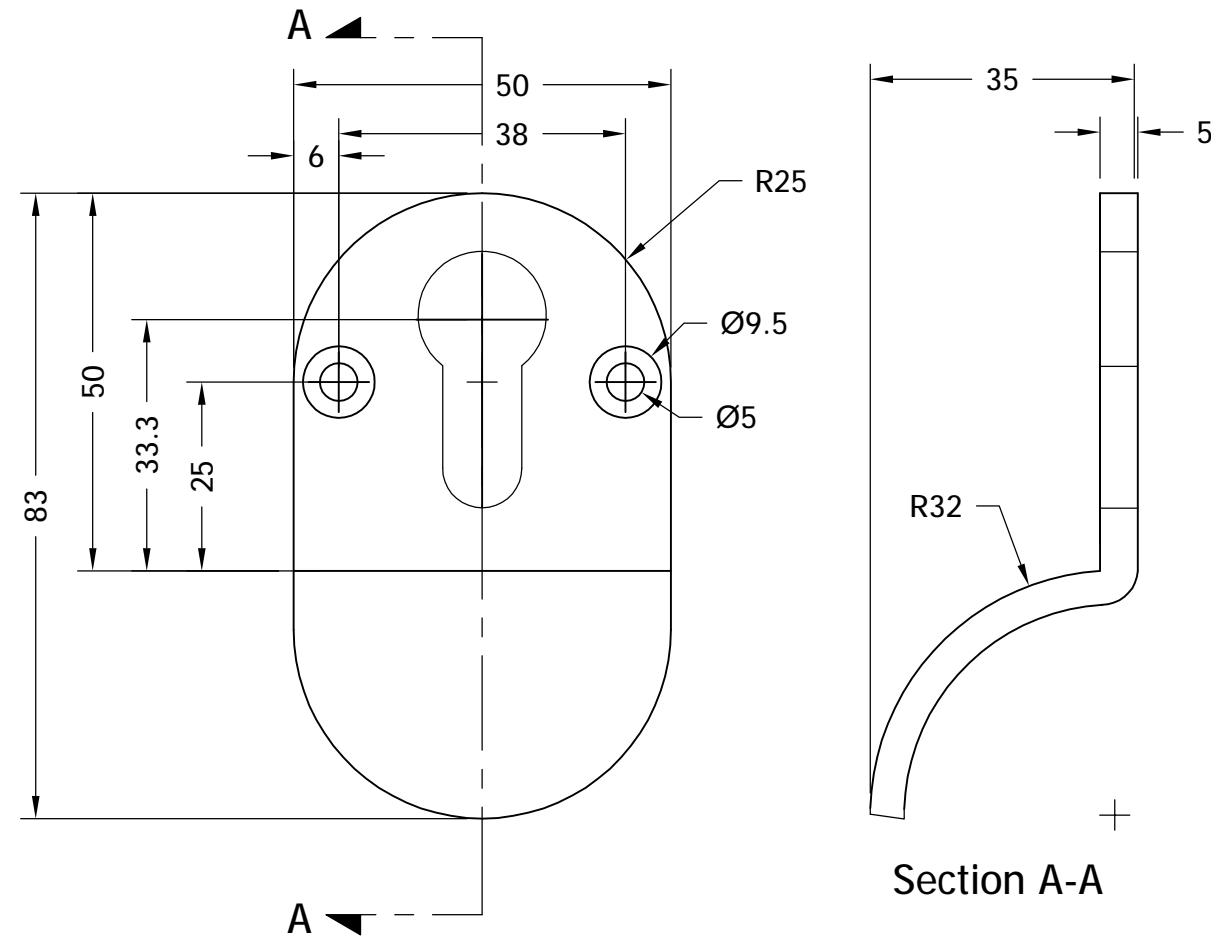
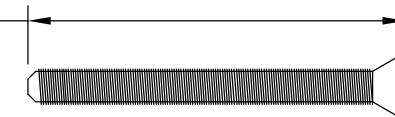


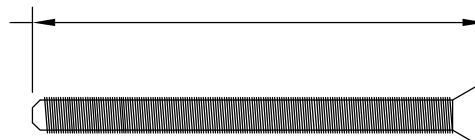
While every attempt has been made to ensure the accuracy and completeness of the information in this document some typographical or technical errors may exist. Blu Performance cannot accept responsibility for customers' losses resulting from the use of this document. Please also note that this drawing / design is subject to change without prior notice in accordance with our policy of continual product development. This drawing / design contains proprietary information that is protected by copyright and is property of Blu Performance. Blu Performance is at the leading edge in joinery hardware, customer care and quality are at the core of everything we do, you can be confident that a call to Blu will be the only call you need for all your joinery hardware needs.



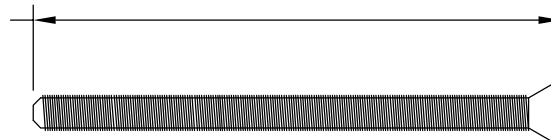
2 x 50mm M/C Screw
Door Thickness
Min 50 | Max 56mm



2 x 60mm M/C Screw
Door Thickness
Min 58 | Max 65mm



2 x 70mm M/C Screw
Door Thickness
Min 69 | Max 75mm



WHATS INCLUDED IN THE BOX	
QTY	DESCRIPTION
1	EXTERNAL CYLINDER PULL
1	INTERNAL CYLINDER PULL
2	50mm LONG MACHINE SCREWS
2	60mm LONG MACHINE SCREWS
2	70mm LONG MACHINE SCREWS

blu Performance in Motion

Global House
Bojea Industrial Estate
Trethowel, St Austell
Cornwall, PL25 5RJ

t | 01726 871025 f | 01726 871731
e | sales@blu-performance.com
w | www.blu-performance.com

Customer Reference:

blu Performance

Drawing Title:
Back to Back Cylinder Pull
316 Stainless Steel

Product Range / Project Reference

CP50

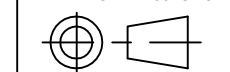
Other Information:	Door thickness - see screw length
--------------------	-----------------------------------

Date Drawn:	30/06/2016
-------------	------------

Drawn By:	Phil Walklett
-----------	---------------

Drawing Number: BP-CP50.dwg	Revision: A
---------------------------------------	-----------------------

THIRD ANGLE PROJECTION	Th
------------------------	----



This drawing and specification are the property of Coastal Group, they are issued in strict confidence and shall not be reproduced, copied or used without written permission.

Scale: 1:1 @A3

Sheet: 1 of 1

All measurements are finished dimensions in MM.