



BLU™

*316 Marine Grade
Stainless Steel*

PVD STAINLESS POLISHED BRASS
SUITED HARDWARE FOR
ALUMINIUM, COMPOSITE &
TIMBER DOORS & WINDOWS



COASTAL

Shaping the future.



PVD Stainless Polished Brass

PPB

Our 316 Marine Grade Polished Stainless Steel with a PVD Brass coating applied to it to give a warm polished to perfection finish which is synonymous with classic period styles.

The PVD (Physical Vapour Deposition) coating provides an additional extremely hardwearing protective layer to the hardware and is also designed to help prevent discolouration.

What is PVD Coating?

PVD stands for Physical Vapour Deposition. Also known as 'thin-film' coating, PVD coating is a process in which the hardware is placed inside a vacuum chamber and given a negative charge, a solid material (the coating) is then vapourised in this vacuum and given a positive charge forcing it to deposit atom by atom onto the surface of the hardware.

The coating is not simply layers of metal, the material is deposited atom by atom providing an ultra-thin, highly accurate and extremely strong coating. It also provides a much more uniform appearance and finish than traditional coating methods.

As the coating is very thin it enables the texture of the underlying metal to still be visible and felt. So for a polished finished product we use a base material of polished stainless steel and apply the PVD coating to it.

The Benefits of PVD Coating

- The PVD process increases the longevity and durability of the hardware, making it more resistant to wear, weather and corrosion.
- The PVD coating does not fade, discolour or tarnish and isn't affected as much by UV rays.
- The PVD coating process is more sustainable and environmentally friendly than traditional coating methods. No harmful gases or other substances are released and there is no waste during the coating process.
- The PVD process does not affect the recycling value of the stainless steel base material.



The benefits of using 316 Marine Grade Stainless Steel as the base material for PVD Coating

Where corrosion levels are high, such as coastal environments and in acidic timber, commonly used metals such as zinc and 304 stainless steel are not able to stand up to the elements and corrosion can quickly start.

However there are many corrosive elements in the atmosphere wherever your doors and windows are, situated on the coast or in a city.

316 Marine Grade Stainless Steel is stronger and has higher levels of corrosion resistance than 304 Stainless Steel. That is why we use 316 Marine Grade Stainless Steel as standard on all BLU™ products.

So wherever your doors and windows are installed, by fitting BLU™ hardware you can have peace of mind your hardware will last at least as long as your doors and windows.



REG090

Regent Lever Door Handle on Backplate



REG020

Regent Window Espagnolette Handle



Classic Suited Hardware for Traditional Lever Operated Doors

This Suited Range includes our Regent Lever Door Handle and features elegant styling to create that classic look. Suitable for lever operated multipoint locks.

Featured here:

1. DKB200 - Ring Door Knocker
2. REG090 - Regent Lever Door Handle on Backplate
3. HQ4 - Butt Hinge
4. LP400 - Sleeved Letter Plate





DKB200

Ring Door Knocker



CP30

Classic Cylinder Pull - Euro



DKB195

Doctor's Front Door Knocker



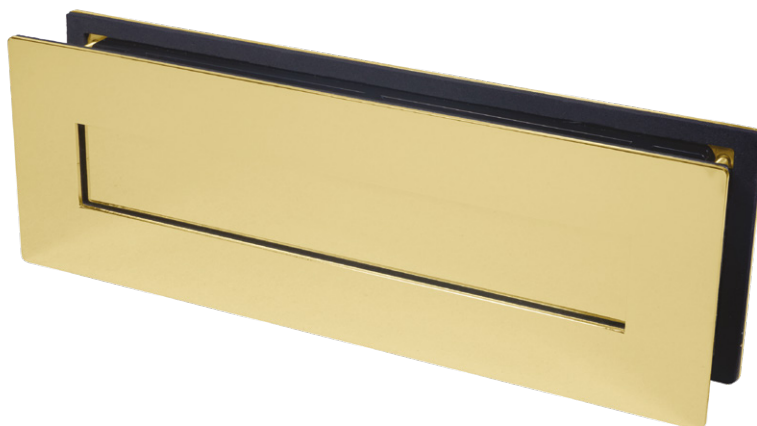
KM388

Centre Door Knob



LP400

Sleeved Letter Plate





Classic Suited Hardware for Traditional Heritage Style Non-Lever Doors

This Suited Range has been selected for traditional Heritage style doors from our BLU™ Range of Hardware.

Suitable for non-lever multipoint locks.

Featured here:

1. DKB200 - Ring Door Knocker
2. KM388 - Centre Door Knob
3. CP30 - Classic Cylinder Pull - Euro
4. HQ4 - Butt Hinge
5. LP400 - Sleeved Letter Plate



HQ4

Butt Hinge
Square Corner



HY3

Slim Knuckle Window Hinge
Square Corner



HQ4R

Butt Hinge
Radius Corner



HY3R

Slim Knuckle Window Hinge
Radius Corner



HQ4R

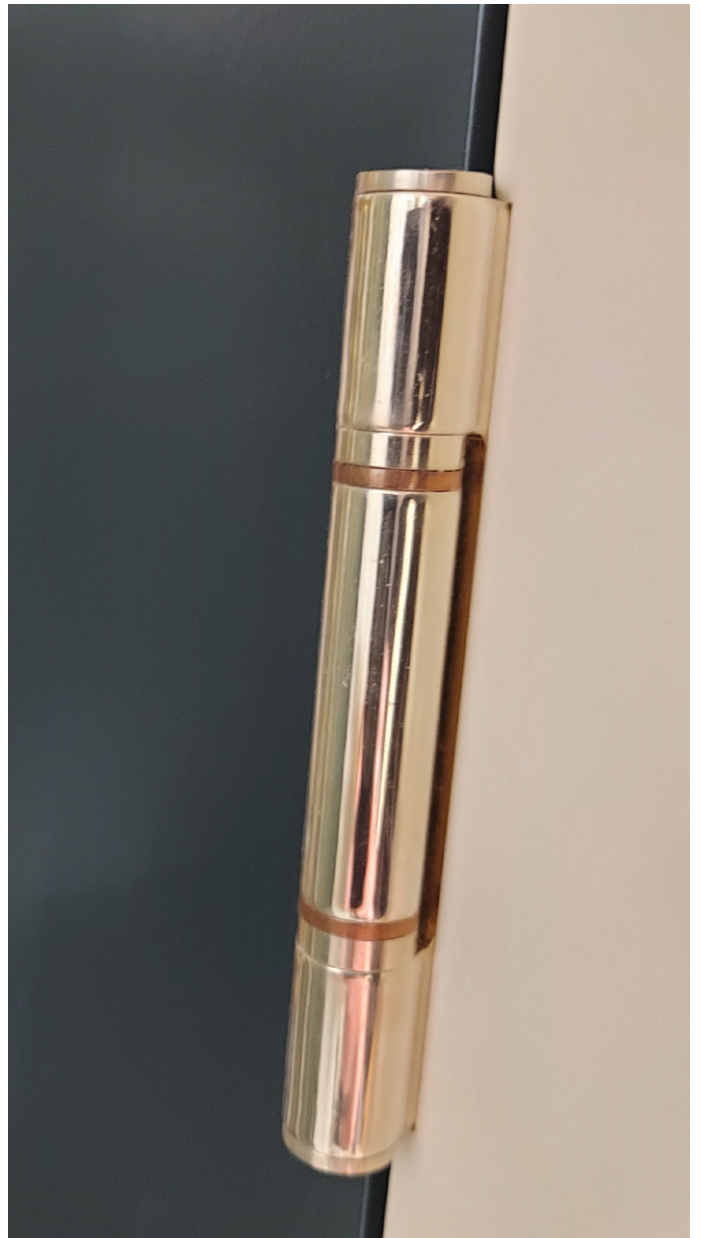
Butt Hinge
Radius Corner



FH70

TRITUS™
Lift-Off Butt Hinge





Shaping the future.



COASTAL

COASTAL GROUP

Head Office: Global House, Bojea Industrial Estate, St Austell, Cornwall, PL25 5RJ, UK

T 01726 871 025 E sales@coastal-group.com W coastal-group.com

Follow us on:



© Coastal Specialist Ironmongery Ltd 2023