



# BLU™

*316 Marine Grade  
Stainless Steel*

SATIN STAINLESS STEEL  
SUITED HARDWARE FOR  
DOORS & WINDOWS



COASTAL

*Shaping the future.*

LIT-BRO-SSS-F



## Satin Stainless Steel

SSS

Raw 316 Marine Grade Stainless Steel with an extra fine finishing processes applied to give it our unique 'super-satin' silky finish.

### BLU - Your Benefits

#### DESIGN

Designed to enhance the aesthetics and performance of your external doors and windows and set them apart from your competition.

#### INNOVATION

We're constantly looking at ways to improve the product offering and performance and create new solutions to meet your needs.

#### DURABILITY / LONGEVITY

The BLU product range is made from 316 Marine Grade Stainless Steel as standard. Helping resist long term corrosion and keeping your doors and windows looking better for longer.

#### SUPER-SATIN FINISH

Include an additional finishing process during manufacture to create a consistent 'super-satin' finish and quality feel.

#### COMPREHENSIVE RANGE

A full suited range of quality hardware across your doors and windows.

#### VALUE FOR MONEY

Excellent lifetime value, providing you with quality you can afford.

#### LIFETIME GUARANTEE

Guaranteed to last as long as the door or window the hardware is fitted to. Providing peace of mind





## The benefits of using 316 Marine Grade Stainless Steel

Where corrosion levels are high, such as coastal environments and in acidic timber, commonly used metals such as zinc and 304 stainless steel are not able to stand up to the elements and corrosion can quickly start.

However there are many corrosive elements in the atmosphere wherever your doors and windows are, situated on the coast or in a city.

316 Marine Grade Stainless Steel is stronger and has higher levels of corrosion resistance than 304 Stainless Steel. That is why we use 316 Marine Grade Stainless Steel as standard on all BLU™ products.

So wherever your doors and windows are installed, by fitting BLU™ hardware you can have peace of mind your hardware will last at least as long as your doors and windows.





## HAB20

'D' Style Commercial Pull Handle  
300mm



## HAB2

Inline Round 'T' Bar Pull Handle  
400 | 600 | 900 | 1200 | 1500 | 1800mm



## HAB21

Offset 'D' Commercial Pull Handle  
300 | 600mm



## HAB6

Offset Round 'T' Bar Pull Handle  
400 | 545 | 600 | 900 | 1200 | 1500 | 1800mm



## HAB8

Bow Pull Handle  
600mm



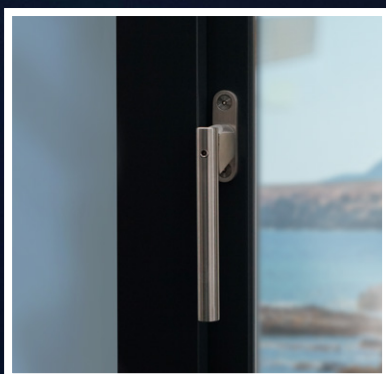


## Contemporary Suited Hardware for Non- Lever Operated Doors

This Suited Range creates a very modern look with our Round Inline or Offset 'T' Bar Pull Handles.

Featured here:

1. HAB6 - Offset Round 'T' Bar Pull Handle
2. KM055 - Round Escutcheon - Euro
3. HQ4 - Butt Hinge
4. LP400 - Sleeved Letter Plate



SST94 Suited Contemporary Window  
Handle available - see pg 26



### HAB15

Inline Rectangular 'T' Bar Pull Handle  
400 | 900 | 1200 | 1500 | 1800mm



### HAB7

Offset Rectangular 'T' Bar Pull Handle  
1200mm



### HAB4

Square Mitre Pull Handle  
900 | 1200mm



### HAB9

'V' Style Pull Handle  
1200mm



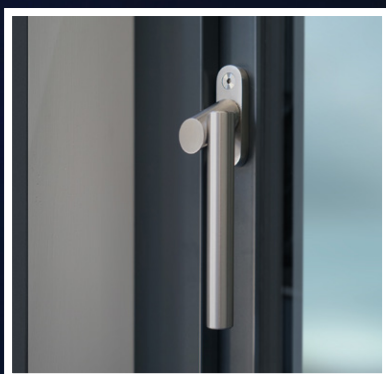


## Contemporary Suited Hardware for Non- Lever Operated Doors

This Suited Range creates a very modern look with our Rectangular Inline or Offset 'T' Bar Pull Handles.

Featured here:

1. HAB15 - Inline Rectangular 'T' Bar Pull Handle
2. KM045 - Oval Escutcheon - Euro
3. HQ4 - Butt Hinge
4. LP400 - Sleeved Letter Plate



SST87 Suited Contemporary Window  
Handle available - see pg 26



**Classic Suited Hardware  
for Traditional Lever  
Operated Doors**

This Suited Range includes our Regent Lever Door Handle and features elegant styling to create that classic look. Suitable for lever operated multipoint locks.

Featured here:

1. DKB200 - Ring Door Knocker
2. REG090 - Regent Lever Door Handle on Backplate
3. HQ4 - Butt Hinge
4. LP400 - Sleeved Letter Plate



## REG020

Regent Window Espagnolette Handle



## REG090

Regent Lever Door Handle  
on Backplate (Unsprung)





**Classic Suited Hardware  
for Traditional Lever  
Operated Doors**

This Suited Range includes our Opera Lever Door Handle and features a classic bulb-end design.

Suitable for lever operated multipoint locks.

Featured here:

1. DKB200 - Ring Door Knocker
2. TBH100 - Opera Lever Door Handle on Round Rose
3. KM055 - Round Escutcheon - Euro
4. HQ4 - Butt Hinge
5. LP400 - Sleeved Letter Plate



## TBH100

Opera Lever Door Handle  
on Backplate



## TBH100

Opera Lever Door Handle  
on Round Rose



## TBH020

Opera Window Espagnolette Handle



Opera Window Handle

# Lever Door Handles on Backplate

- For those who want modern styling but need a lever handle to operate their multipoint lock
- Clip on cover fixings
- Solid 316 Stainless Steel levers



## KM130

Ergonomic Lever Door Handle on Backplate



## KMo78

Mitre Lever Door Handle on Backplate



## KMo70

Mitre Lever Door Handle on Backplate (Unsprung)





## Contemporary Suited Hardware for Lever Operated Doors

For those who want modern styling but need a lever handle to operate their multipoint lock - the Mitre Lever range with its clean, crisp lines is perfect.

Featured here:

1. DKB155 - Door Knocker
2. KM078 - Mitre Lever Door Handle
3. HQ4 - Butt Hinge
4. LP400 - Sleeved Letter Plate



# Lever Door Handles on Round Rose

- For those who want modern styling but need a lever handle to operate their multipoint lock
- Clip on cover fixings
- Solid 316 Stainless Steel levers



## KMo60

Mitre Lever Door Handle on Round Rose



## KMo65

'T' Bar Lever Door Handle on Round Rose



## KMo35

Ergonomic Lever Door Handle on Round Rose



## WH900

Wing Lever Door Handle on Round Rose





## Contemporary Suited Hardware for Lever Operated Doors

For those who want modern styling but need a lever handle to operate their multipoint lock - the Ergonomic Lever range combines quality with comfort and style.

Featured here:

1. BLN - Numerals & Letters
2. KM035 - Ergonomic Lever Door Handle
3. KM055 - Round Escutcheon - Euro
4. HQ4 - Butt Hinge
5. LP400 - Sleeved Letter Plate



# Lever Door Handles on Oval Rose

- For those who want modern styling but need a lever handle to operate their multipoint lock
- Clip on cover fixings
- Solid 316 Stainless Steel levers
- ideal for slim profile



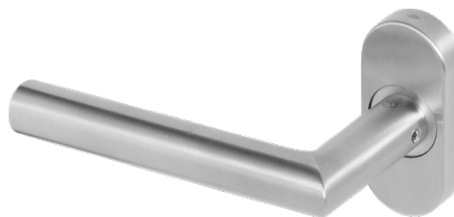
## KM965

'T' Bar Lever Door Handle  
on Oval Rose



## KM960

Mitre Lever Door Handle  
on Oval Rose



## KM930

Ergonomic Lever Door Handle  
on Oval Rose



## WH990

Wing Lever Door Handle  
on Oval Rose



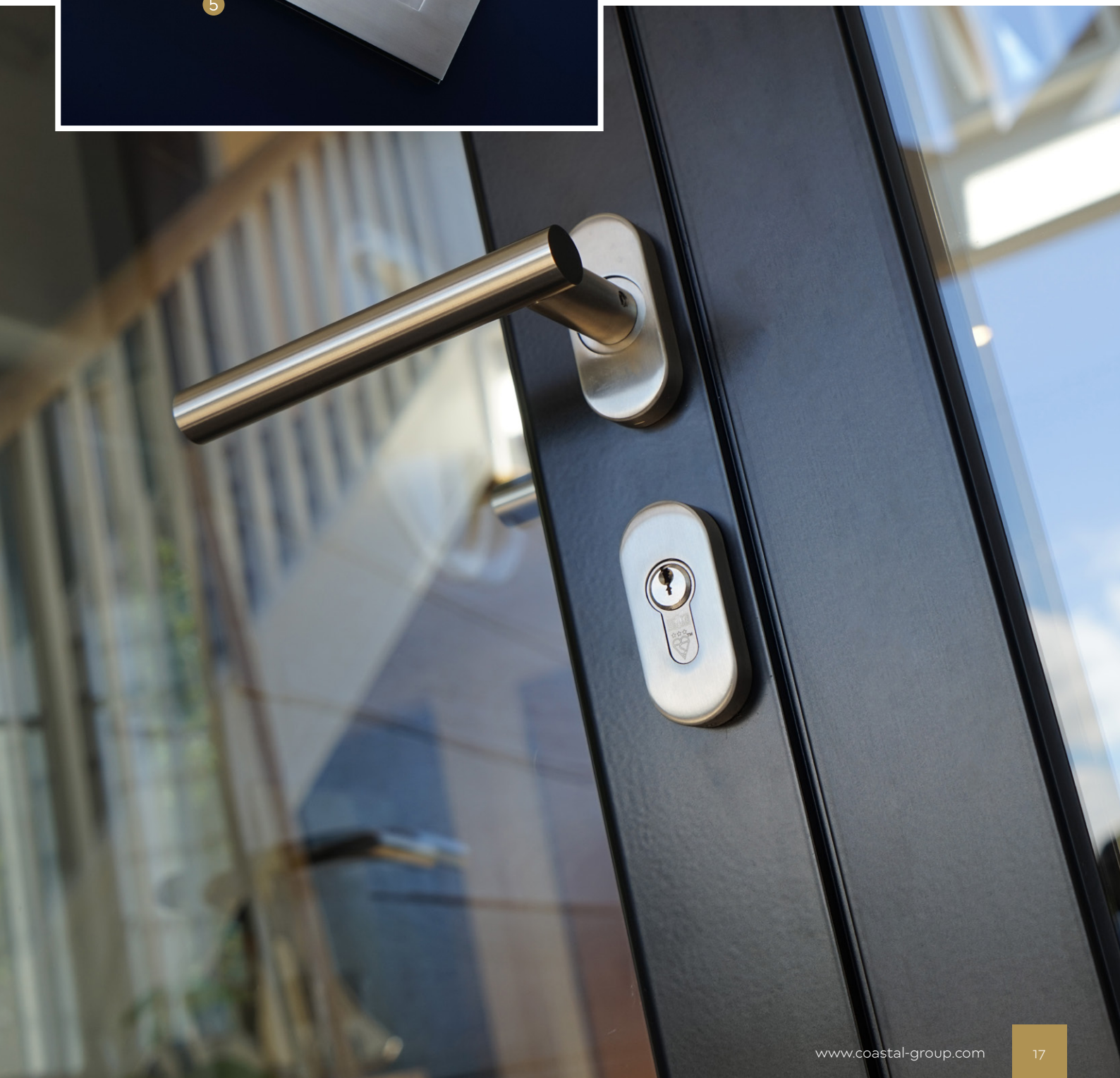


## Contemporary Suited Hardware for Lever Operated Doors

For those who want modern styling but need a lever handle to operate their multipoint lock - the 'T' Bar Lever range makes the perfect style statement.

Featured here:

1. DKB155 - Door Knocker
2. KM965 - 'T' Bar Mitre Lever Door Handle
3. KM045 - Oval Escutcheon - Euro
4. HQ4 - Butt Hinge
5. LP400 - Sleeved Letter Plate



## KM100

Bi-Fold Door Flat Handle



## KM115

Bi-Fold Door Flat Handle with Euro Profile



### Contemporary Suited Hardware for Bi-Fold Doors

Suited range includes handles for both the traffic door and folding leaves on your bi-fold doors. Any of our lever door handles on oval rose or backplate can be suited with our KM100 or KM115 Bi-Fold Door Handles.

Featured here:

1. KM100 - Bi-Fold Door Flat Handle
2. KM930 - Ergonomic Lever Door Handle on Oval Rose
3. KM045 - Oval Escutcheon - Euro





## KM045

Oval Escutcheon - Euro



## KM945

Slimline Oval Escutcheon



## KM048

Self Adhesive  
Oval Escutcheon - Euro



## KM055

Round Escutcheon - Euro



## SE35

Slimline Round Escutcheon - Euro



## KM058

Self Adhesive Round Escutcheon -  
Euro



## KM056

Square Escutcheon - Euro



## LP400

Sleeved Letter Plate



## DKB200

Ring Door Knocker



## DKB195

Doctor's Front Door Knocker



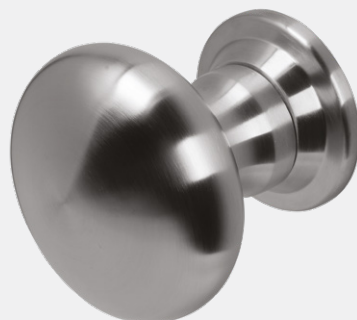
## DKB155

Door Knocker



## KM388

Centre Door Knob



## KM120

Square Door Knob

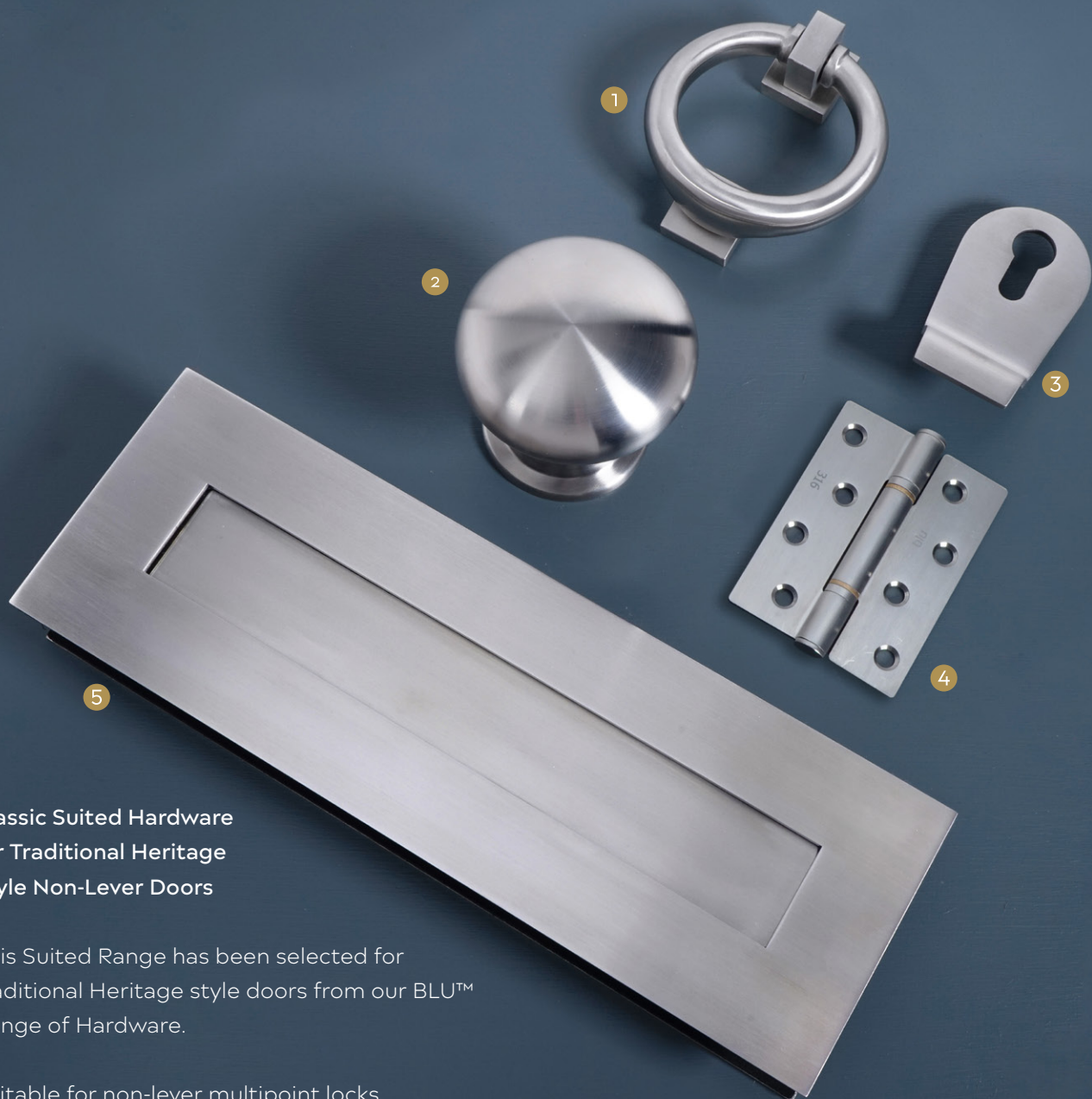


## KM150

Round Door Knob







### Classic Suited Hardware for Traditional Heritage Style Non-Lever Doors

This Suited Range has been selected for traditional Heritage style doors from our BLU™ Range of Hardware.

Suitable for non-lever multipoint locks.

Featured here::

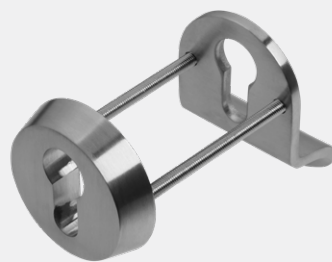
1. DKB200 - Ring Door Knocker
2. KM388 - Centre Door Knob
3. CP30 - Classic Cylinder Pull - Euro
4. HQ4 - Butt Hinge
5. LP400 - Sleeved Letter Plate





## CP80

Internal Cylinder Pull with  
External Security Escutcheon - Euro



## SE38

Security Escutcheon - Euro



## SE40

Security Escutcheon / Cylinder Pull Sets - Euro



### SE40A

Ext. security escutcheon /  
Internal cylinder pull



### SE40B

Ext. security escutcheon /  
Internal Escutcheon



### SE40C

Ext. security cylinder pull /  
Internal escutcheon



### SE40D

Ext. security cylinder pull /  
Internal cylinder pull



## CP50

Contemporary Cylinder Pull - Euro



## CP75

Euro Profile Cylinder Pull Set



## CP55

Contemporary Cylinder Pull - Euro  
Inside Pull only



## BLN

Numerals & Letters

A B C D

0 1 2 3 4 5 6 7 8 9

## CP30

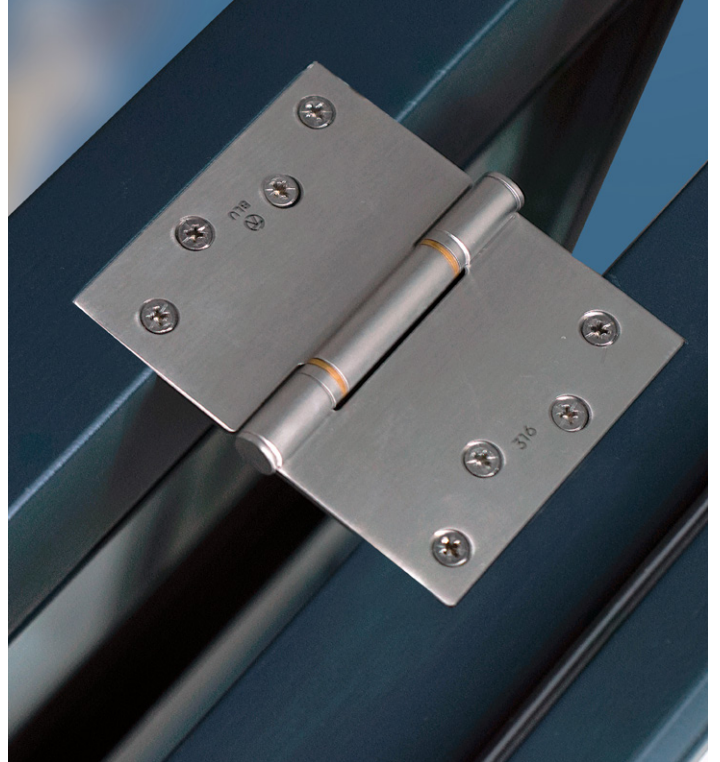
Classic Cylinder Pull - Euro





## HQ4

Butt Hinge  
Square Corner



## HQ4R

Butt Hinge  
Radius Corner



## HQ4-SEC

Butt Hinge  
Square Corner with Dogbolt



## HQ45

Projection Hinge  
Square Corner





## HY3

Slim Knuckle Window Hinge  
Square Corner



## HX507

Lift-Off Hinge  
Half Leaf



## HY3R

Slim Knuckle Window Hinge  
Radius Corner



## HQ

Shimwell™ Hinge Packers



## FH70

TRITUS™  
Lift-Off Butt Hinge





## SST81

Contemporary Window Handle - Offset



## SST87

Contemporary Window Handle - Cranked



## SST100

Contemporary Window Handle -  
Inline Angled



## SST94

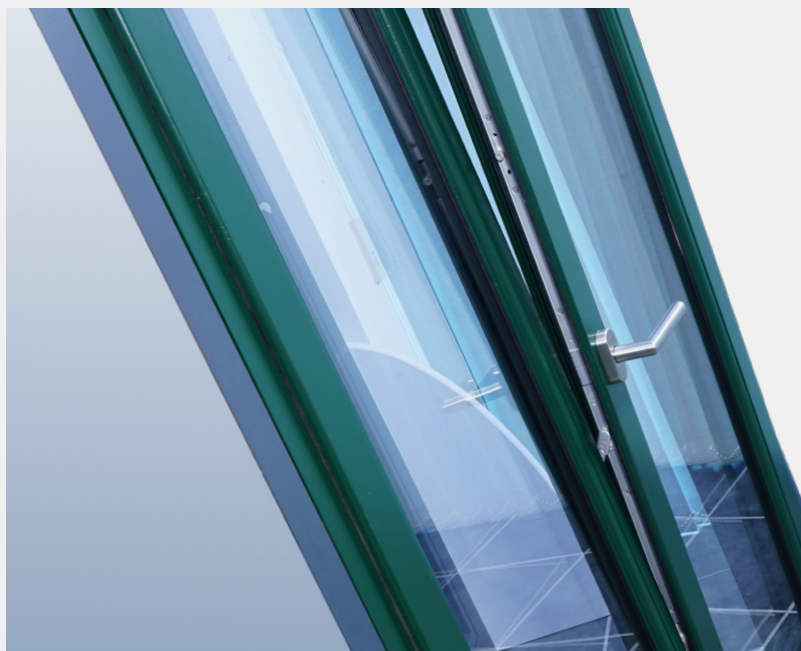
Contemporary Window Handle - Slim Inline





## TTH50

Tilt & Turn Window Handle



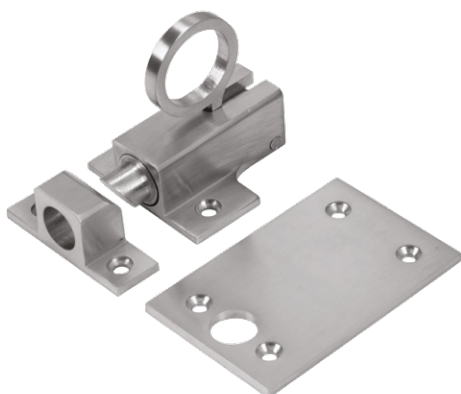
## SST91 / SST93

Casement Window Stay  
290mm | 220mm



## BFC45

Fanlight Catch





## KM9 Series

Patio Slide Door Handle

KM905 -  
Back-to-back  
blank plate  
handles



KM920 -  
Back-to-back  
lever & Euro  
cut-out handles



KM950 -  
Internal lever  
& Euro cut-out  
handle and  
External blank  
plate handle





## KM7 Series

Lift & Slide Door Handle

KM750 -  
Internal lever & Euro cut-out  
faceplate, External flush pull



KM760 -  
Internal lever & blank  
faceplate, External  
flush pull



KM780 -  
Back-to-back lever handles  
& Euro cut-out faceplate



KM790 -  
Back-to-back lever  
handles & blank  
faceplate



## FP120

Radius End Door Flush  
Pull - Screw Fix



## FP150

Radius End Door Flush  
Pull - Glue Fix



## KM859

Straight Slide Handle Kit  
Inline Round 'T' Bar

Single Kit -  
Internal Bar  
Pull Handle,  
External Flush  
Pull Handle



Pair Kit -  
Internal and  
External Bar  
Pull Handle



## KM850

Straight Slide Handle Kit  
Offset Round 'T' Bar

Single Kit -  
Internal Bar  
Pull Handle,  
External  
Flush Pull  
Handle



Pair Kit -  
Internal and  
External Bar  
Pull Handle





## KM853

Straight Slide Handle Kit  
Inline Rectangular 'T' Bar

Single Kit -  
Internal Bar  
Pull Handle,  
External  
Flush Pull  
Handle



Pair Kit -  
Internal and  
External Bar  
Pull Handle



## KM856

Straight Slide Handle Kit  
Offset Rectangular 'T' Bar

Single Kit -  
Internal Bar  
Pull Handle,  
External Flush  
Pull Handle



Pair Kit -  
Internal and  
External Bar  
Pull Handle



## KM200

Patio Thumbturn  
Oval Rose



## KM245

Slimline on  
Oval Rose



## KM250

Patio Thumbturn  
Round Rose



*Shaping the future.*



COASTAL

COASTAL GROUP

Head Office: Global House, Bojea Industrial Estate, St Austell, Cornwall, PL25 5RJ, UK

T 01726 871 025 E [sales@coastal-group.com](mailto:sales@coastal-group.com) W [coastal-group.com](http://coastal-group.com)

Follow us on:



© Coastal Specialist Ironmongery Ltd 2023