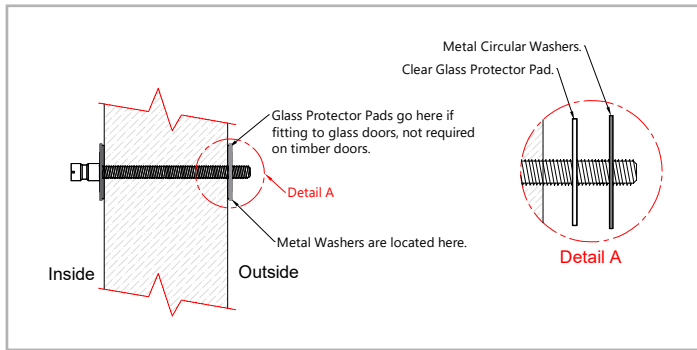


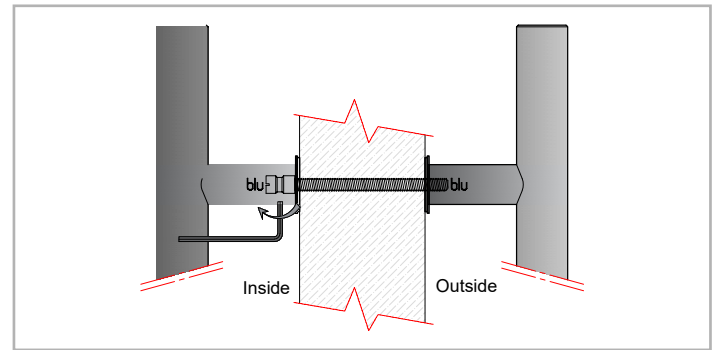
FITTING GUIDE

HAB2 PULL HANDLE

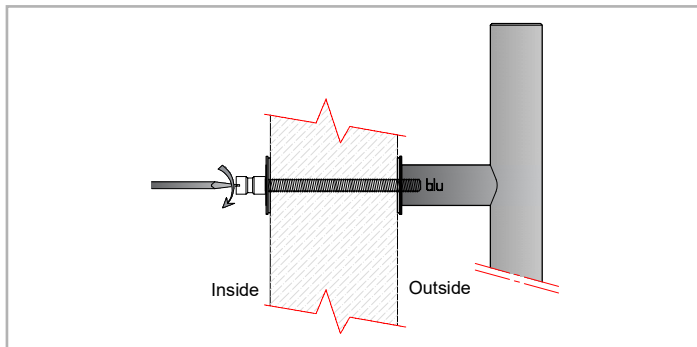
LIT-FG-HAB2



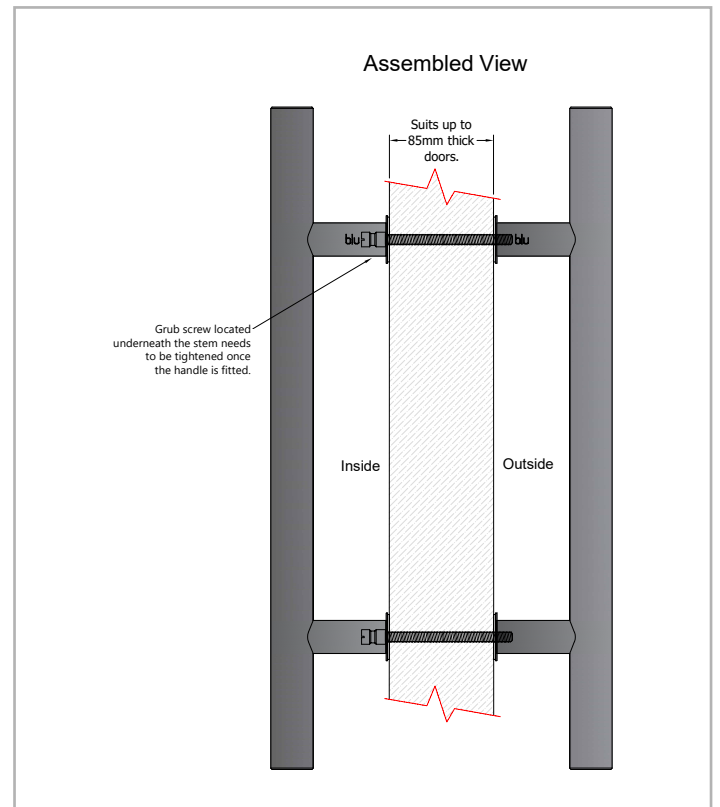
1. Push the bolt through the hole using the washers provided, if installing on a glass door the Glass Protector Pads must be used first, then the metal washers. If installing on a timber door the Glass Protector Pads are not required, just use the metal washers.



3. Locate the internal handle with the grub screws over the locating pegs both top and bottom simultaneously, push the handle until it is flush with the metal washers. Apply slight pushing pressure then tighten the grub screws hand tight, both top and bottom screws need tightening, the handle is now fitted.



2. Taking the Pull handle without the grub screw, locate the bolt to the hole in the handle and tighten until tight, you can use a screw driver to do this, do NOT use a battery operated driver as this may damage the threads. Repeat this for both holes.



COASTAL

Shaping the future.