

# FITTING GUIDE

## DKB200 RING DOOR KNOCKER

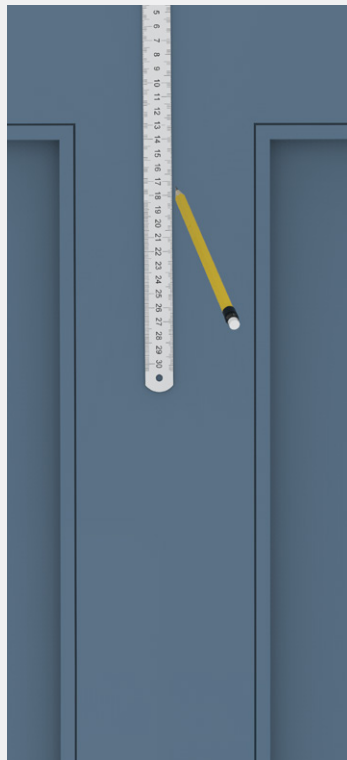


**COASTAL**

*Shaping the future.*

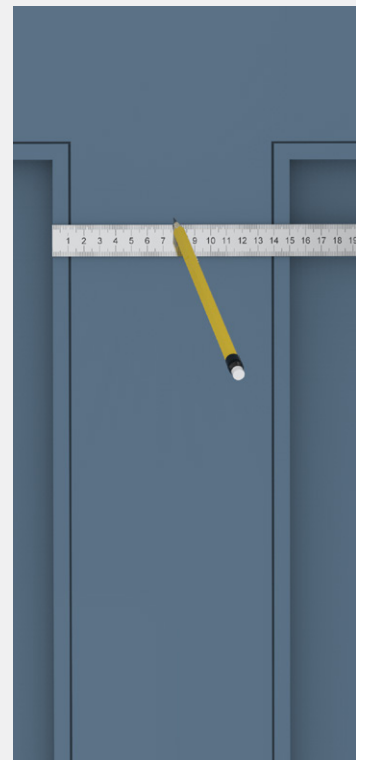
1

Confirm at what height location you would like Door Knocker to be positioned on the door.



2

Measure where the centre line is on the door.

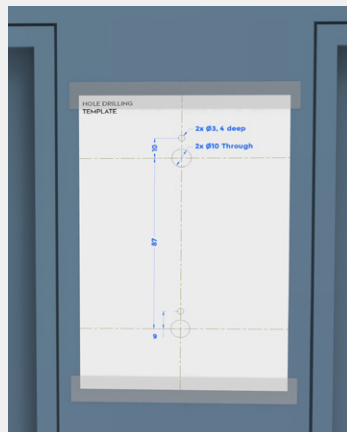


3

Align the centre line shown on the supplied Hole Drilling Template with the centre line of the door.



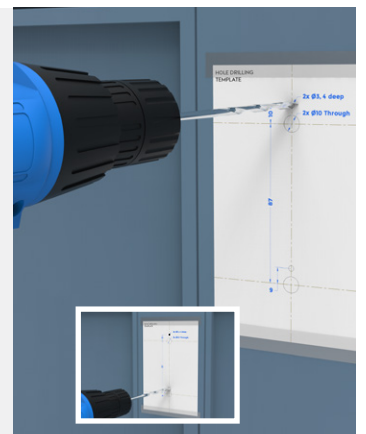
Ensure template is positioned square and plumb on the door then fix top and bottom of template to door using a low-tack adhesive masking tape.



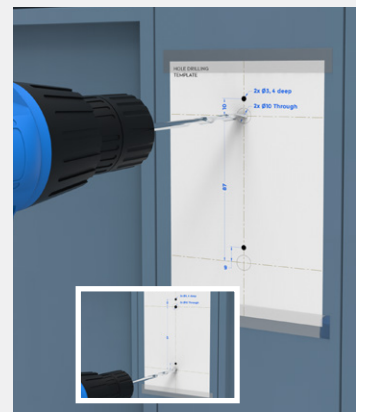
4

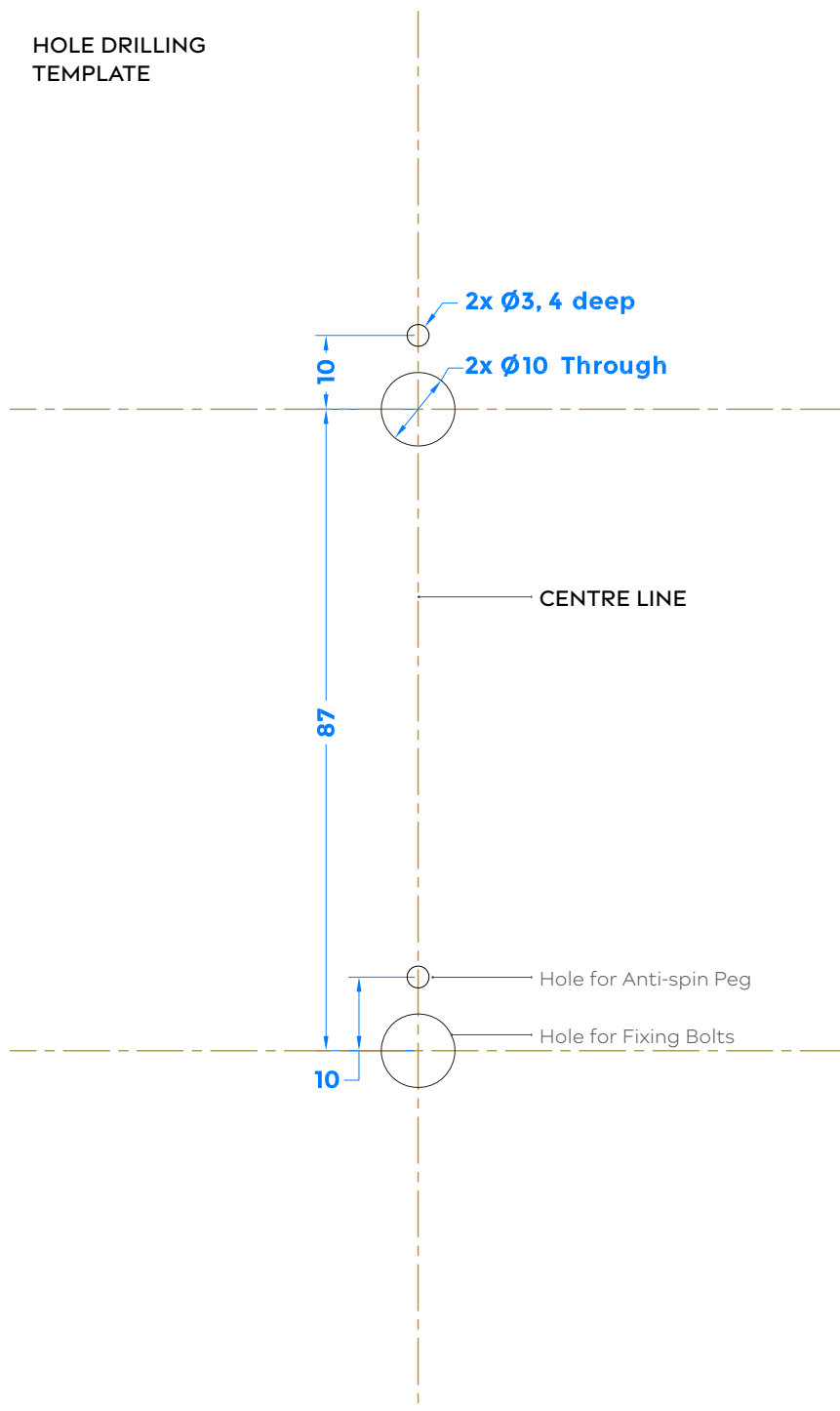
Keeping the template in place on the door, drill the 2 x 3mm holes, 4mm deep, for the Anti-spin Pegs.

Note: The holes should be only 4mm deep.



Then drill 3mm pilot holes for the Fixing Bolts all the way through the door.





**NOTE:** If printing the template yourself from PDF you will need to ensure you print out at 1:1 scale actual size and that the distance between Fixing Bolts hole centres is 87mm as shown on this drawing. Measurements shown above are in millimetres.

5

Drill the 2 x 9mm holes for the M8 fixing bolts, only drilling halfway through from the front of the door.

This is so you don't split the timber or cause breakout on the paint finish.

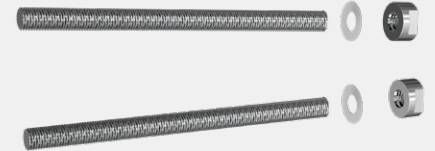
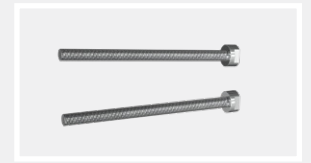


Then on the back of door drill out the 2 x 3mm holes for the bolts to 9mm, drilling the rest of the way through from the back.



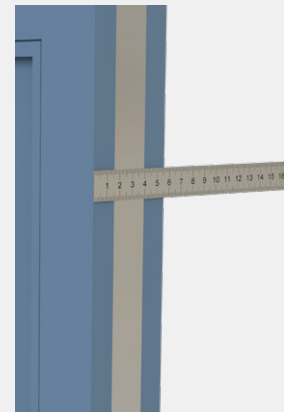
6

Remove decorative nut and washer from the 2 x fixing bolts.



Measure the thickness of your door and cut your bolts to length as follows:

- Top fixing bolt length (for Knocker) = Thickness of door + 28mm
  - Bottom fixing bolt length (for Impact Plate) = Thickness of door + 7mm
- File the cut end of the Bolt to give a slight bevel.



7

Thread the shorter fixing bolt into the Impact Plate, turning it through 3 turns.



Make sure the Anti-spin Peg is at the top and thread the bolt through the door.



Check the Plate is square on the door and push in so the peg on the back enters the hole drilled for it on the face of the door.



8

Affix washer onto end of bolt on back of door and secure the bolt using the decorative nut.

Hand tighten and check the Impact Plate is square on the outside of the door.

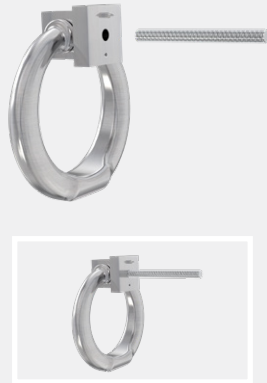


Then tighten the decorative nut using a 16mm spanner.



9

Thread the longer fixing bolt into the back of the fixing plate on top of the Door Knocker, turning it through 3 turns.



Make sure the Anti-spin Peg is at the top and thread the bolt through the door.

Check the Knocker is square on the door and push in so the peg on the back enters the hole drilled for it on the face of the door.



10

Affix washer onto end of bolt on back of door and secure the bolt using the decorative nut.

Hand tighten and check the Door Knocker is square on the outside of the door.

Then tighten the decorative nut using a 16mm spanner.



## Hardware Care and Maintenance Guide

To help you care for this product please follow the guidelines below.

Immediately after fitting and installation - clean the hardware using a soft cloth and mild soapy water then dry immediately with a clean, soft cloth.

### Please Note

- DO NOT use oily rags or greasy cloths when wiping the product surface.
- DO NOT use bleach, abrasive cleaners, caustic or acid based cleaning materials, or detergents containing chloride, or any other strong household cleaning products.
- DO NOT use abrasive materials, files or other hard objects against the product surface.
- This product should be protected from dust and dirt during any construction work.
- PVD coatings may fingerprint so we suggest during installation of the product that you handle it with clean gloves or cloths to guard against stains or fingerprints. Fingerprints can be removed by washing product with a mild soap and water solution, then dried.
- If a softer metal such as a ring or a key marks the surface, it is possible some of this metal may have been left on the PVD coated surface. In this case use a soft cloth and mild, non-acidic cleaner to remove the soft metal deposit.

If this product has a polished stainless steel or satin stainless steel finish, then our DR121 Stainless Steel Renovation Kit should be used at least every six months to help maintain this product in pristine condition.

- The DR121 cleaner is a liquid solution that cleans and polishes, removing contamination, tarnish, tea staining, surface rust and on-site dust and dirt without attacking the metal.
- This cleaner is essential for keeping hardware cleaned and maintained especially when fitted to property situated on or near the coast.
- DR121-CO is a neutral liquid conditioner for use after the metal surface has been cleaned with DR121-CL cleaner.
- The conditioner can also be used for daily cleaning and maintenance of slightly soiled metal surfaces.

*Refer to Care and Maintenance Guide for further information and remember to protect handle during building works.*

*For more information contact us using the details below.*

