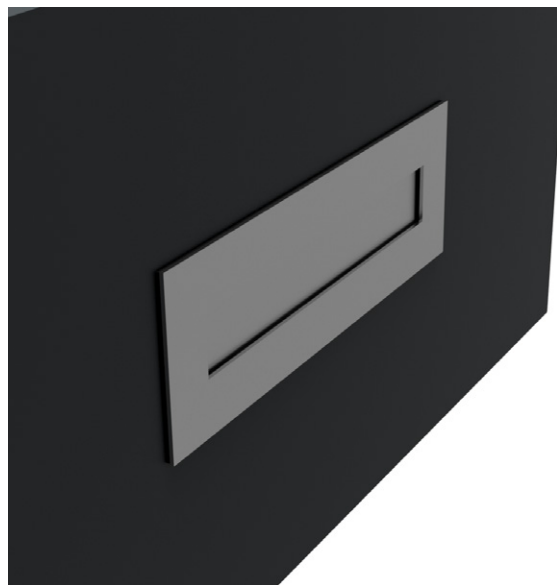


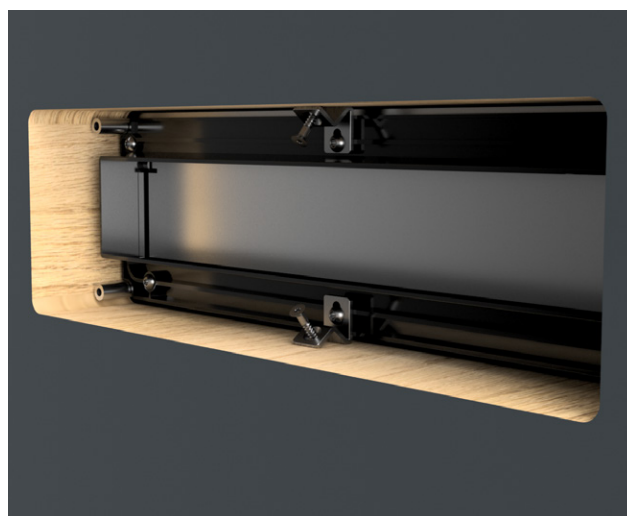
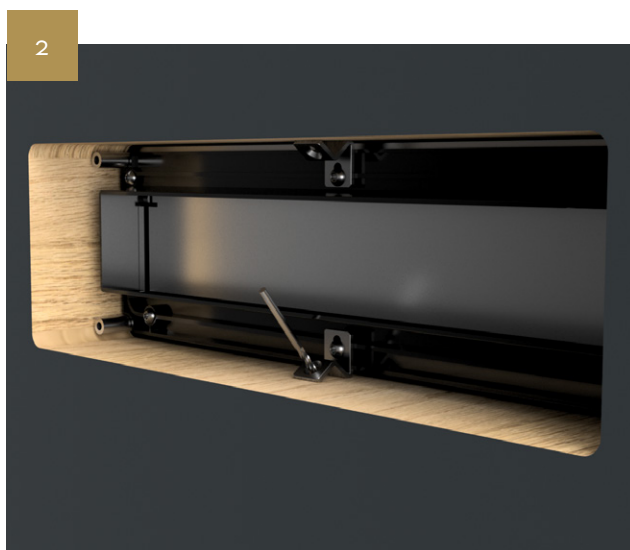
FITTING GUIDE

LP400 – LETTER PLATE

LIT-FG-FX-LP400



Machine a hole in the required location measuring 315 x 95mm. Take the Exterior plate and locate it evenly into the hole until the gasket is sitting flush to the surface of the door.



Holding the Exterior plate firmly to the door release the silver screws holding the brackets in position and adjust the brackets until they are sitting flush to the timber cutout, tighten the screws back up firmly.

Using a 3mm drill pilot drill the holes for the screws as shown in the above left image, **DO NOT GO TOO DEEP.**

Take 2 counter sunk screws (not provided) and tighten them firmly in place to hold the letter plate into position, the security retainers are now fitted.

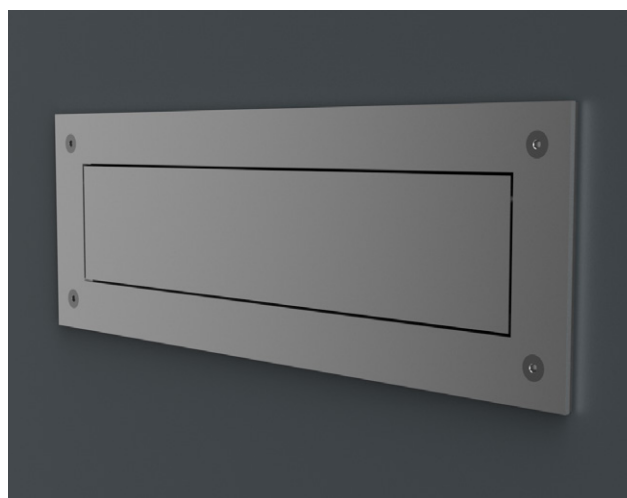
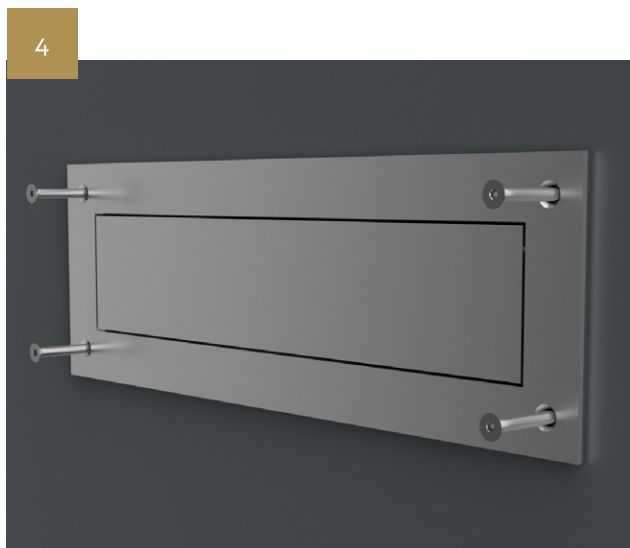
FITTING GUIDE

LP400 – LETTER PLATE

LIT-FG-FX-LP400



Take the internal plate and push to locate into the exterior plate until the gasket is sitting flush to the surface of the door.



Take the 4 machine screws, length of screw depends on the door thickness, locate the screws through the plate so they line up with the location pegs on the exterior plate and then tighten the screws to firmly fix the letter plate into position.

IMPORTANT NOTE: DO NOT over tighten these screws, slight compression on the gasket is all that is required.

You have successfully installed your LP400 letter plate.



COASTAL

Shaping the future.