



BLU™

316 Marine Grade Stainless Steel Hardware

CASE STUDY

BLU Door Hardware
withstands the
Northumberland weather



COASTAL

Shaping the future.



BLU Door Hardware withstands the Northumberland weather

When joiner Neil Blakeburn of Ochiltree Bespoke Joinery needed a new front door he knew he was going to have to be careful with his choice of hardware for it. Living in Northumberland meant the door hardware would have to be 'fit for purpose' in coping with the severe weather and environment.

As Neil said "I was looking for the highest quality ironmongery that would manage the harsh

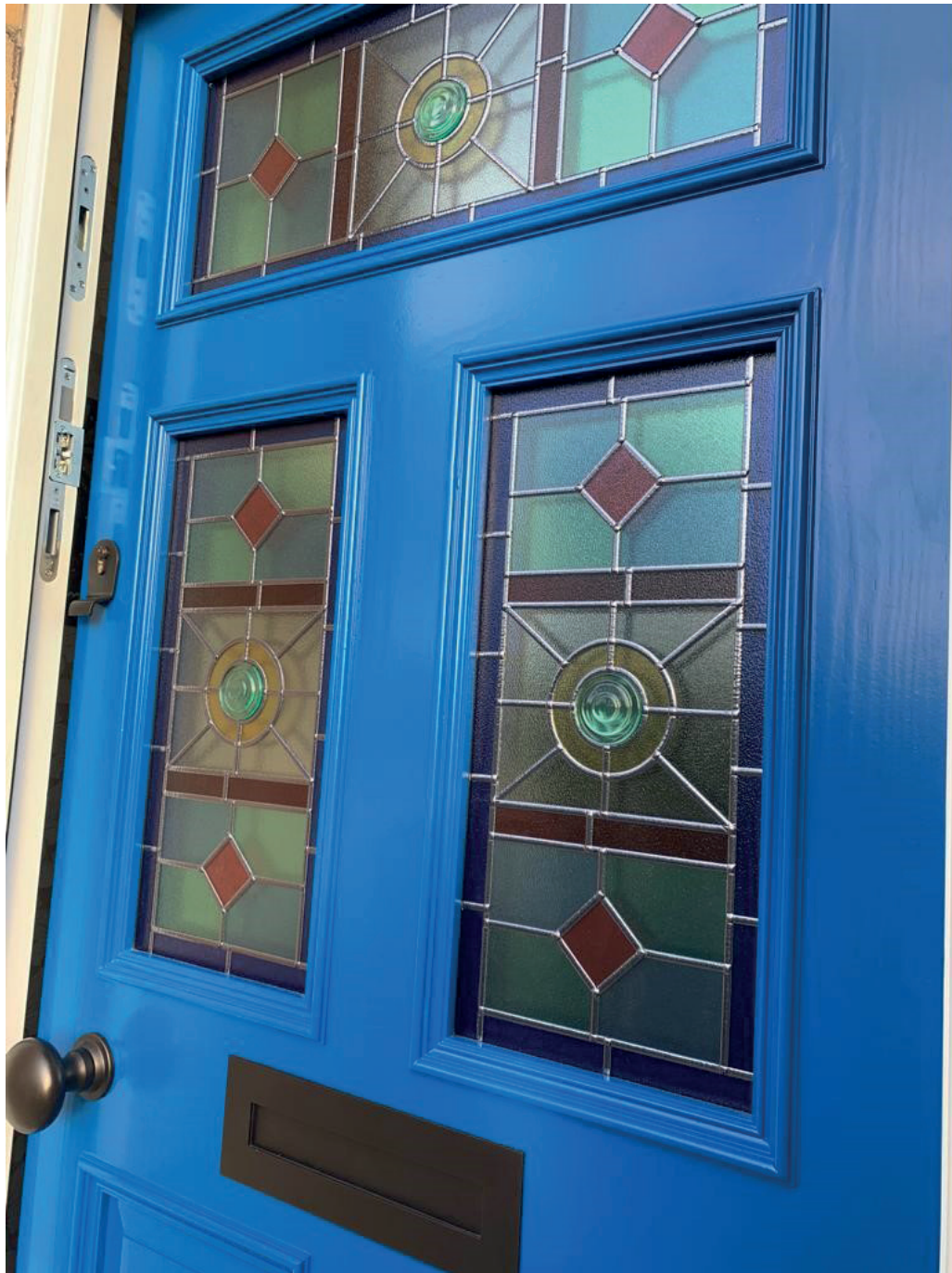
Northumberland weather in the winter. Using Accoya as the timber for the door, 'BLU' was the only choice as it combined aesthetics, performance and endurance.

It gave me peace of mind knowing that BLU ironmongery is made from a high grade 316 stainless steel. This meant the hardware would not only be able to withstand the acidic timber but also the corrosive atmosphere associated

with Northumberland. I wanted hardware on my new door which was going to stay looking good for many years to come.

Coastal also supplied the Winkhaus heritage lock. I wanted this lock as it not only gives the door the security of a high-performance multipoint lock, but also keeps the tradition of most houses in our area by giving the look of the traditional Yale Nightlatch lock."

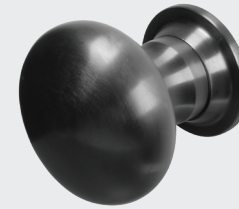




Products in this case study



CP30 - Classic Cylinder Pull in PVD Stainless Satin Black



KM388 - Centre Door Knob in PVD Stainless Satin Black



HQ4 - Butt Hinge Square Corner in Matt Smooth Black



LP400 - Sleeved Letter Plate in PVD Stainless Satin Black

For more information on each product visit: [coastal-group.com](https://www.coastal-group.com)

Shaping the future.



COASTAL

COASTAL GROUP

Head Office: Global House, Bojea Industrial Estate, St Austell, Cornwall, PL25 5RJ, UK

T 01726 871 025 E sales@coastal-group.com W coastal-group.com

Follow us on:



© Coastal Specialist Ironmongery Ltd 2022