



BLU™

316 Marine Grade Stainless Steel Hardware

LP400 Sleeved Letter Plate

**INSPIRATIONS GALLERY
AND TESTIMONIALS**



COASTAL

Shaping the future.





“ The only one we will use.
Tried the rest and
settled on the best. ”





RP Joinery's client owned a house directly on the seafront in Whitstable. They had experienced issues with their previous door due to the extreme coastal environment causing the hardware to corrode and deteriorate. The only way to stop this corrosion happening to their new door was to specify our range of BLU 316 Marine Grade Stainless Steel Door Hardware.

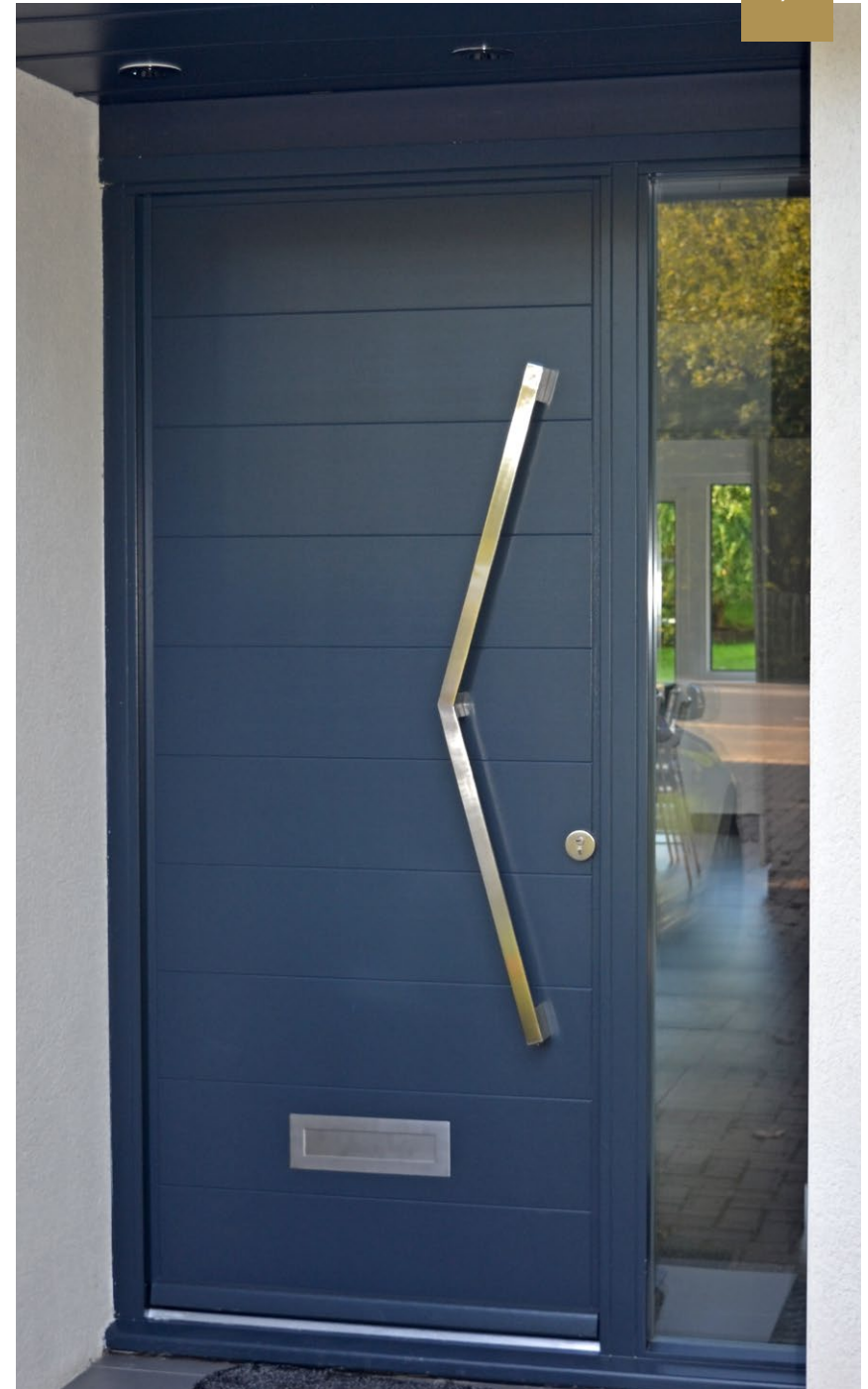






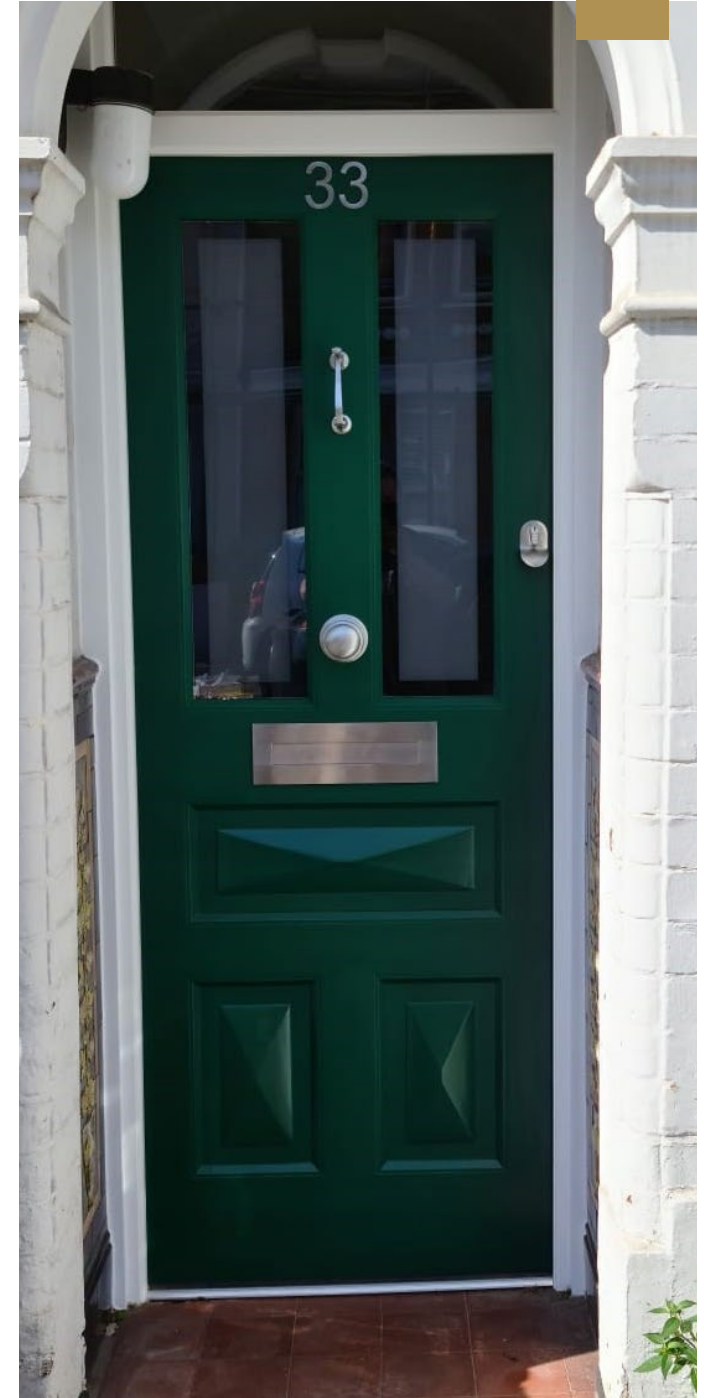
“ Me and my customer just loved this product, easy to install and such high quality ”





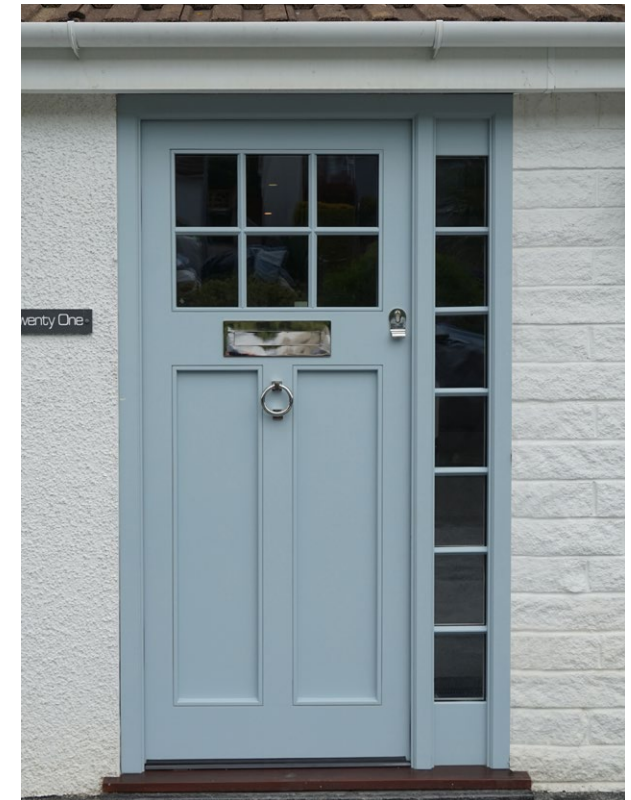


“ Very nice and draught proof. ”





“
We've fitted a few
now and they look
great in all
the colours! ”





"I searched for a long time trying to find a replacement letter plate that would not only stop the rain, but also the cold wind, whilst at the same time matching the rest of the brushed stainless steel hardware.

Eventually I saw the BLU™ LP400 Letter Plate which looked just the job to rectify the problems I was having with driving rain and wind coming through my previous letter plate.

The LP400 from BLU™ is easily the best letter plate on the market and has really impressed me with it's high quality manufacture and perfect function.

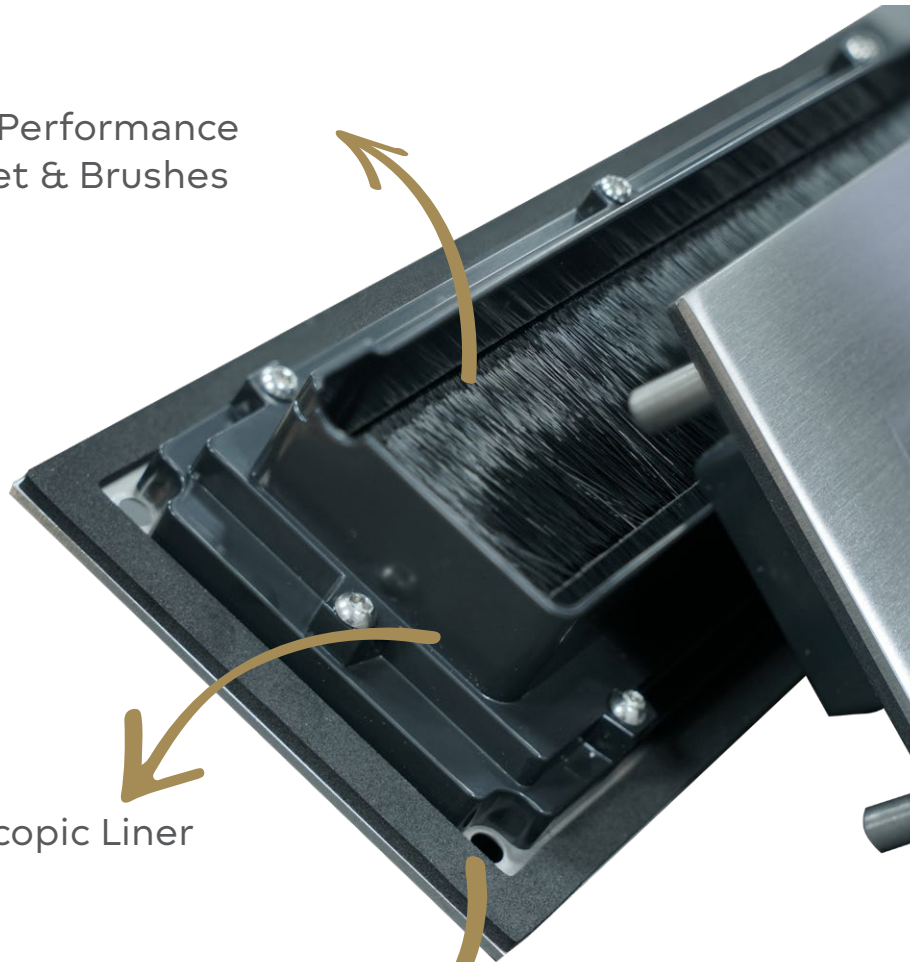
Now it's fitted I have total faith that the worst of the Scottish weather is being kept outside."

Scottish Homeowner





High Performance
Gasket & Brushes



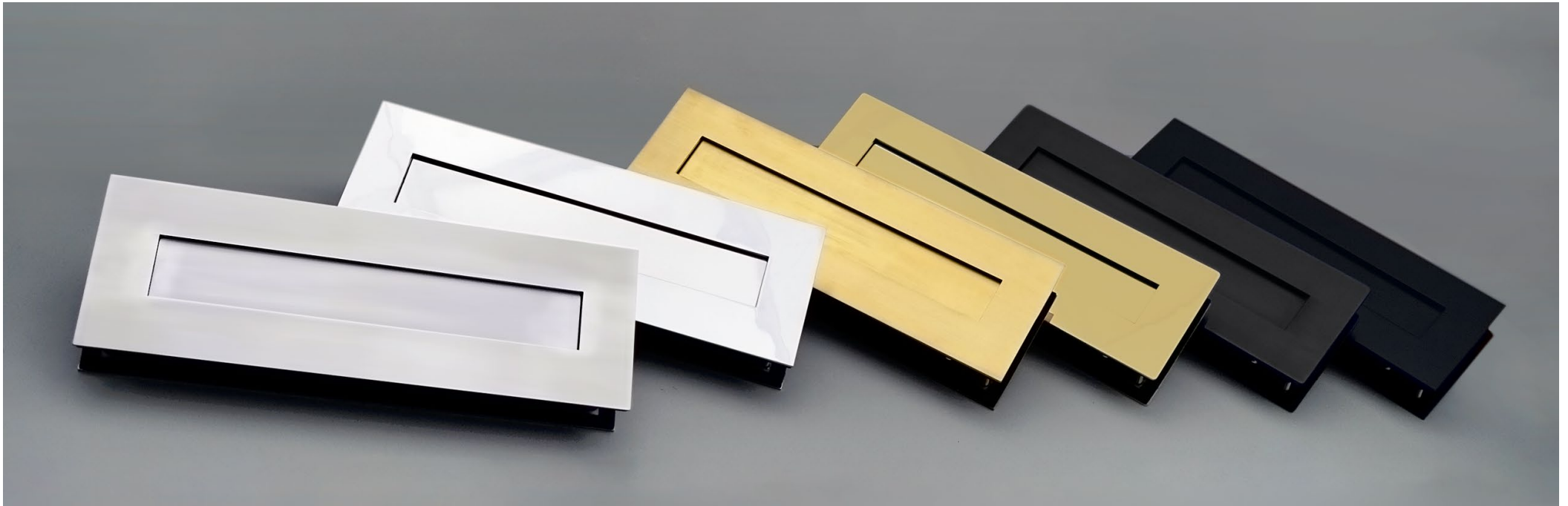
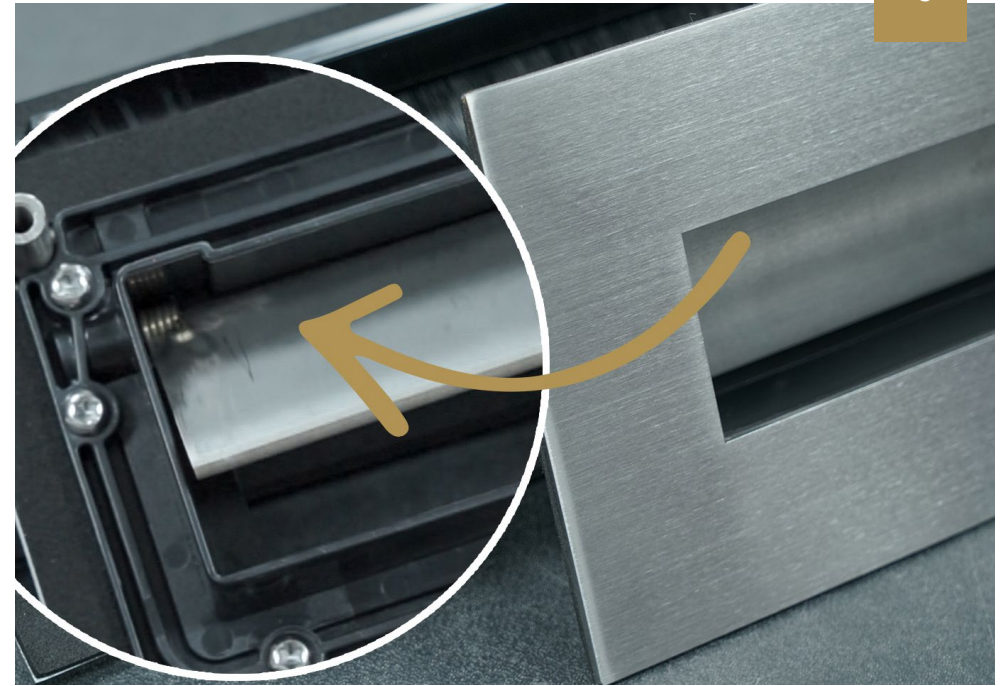
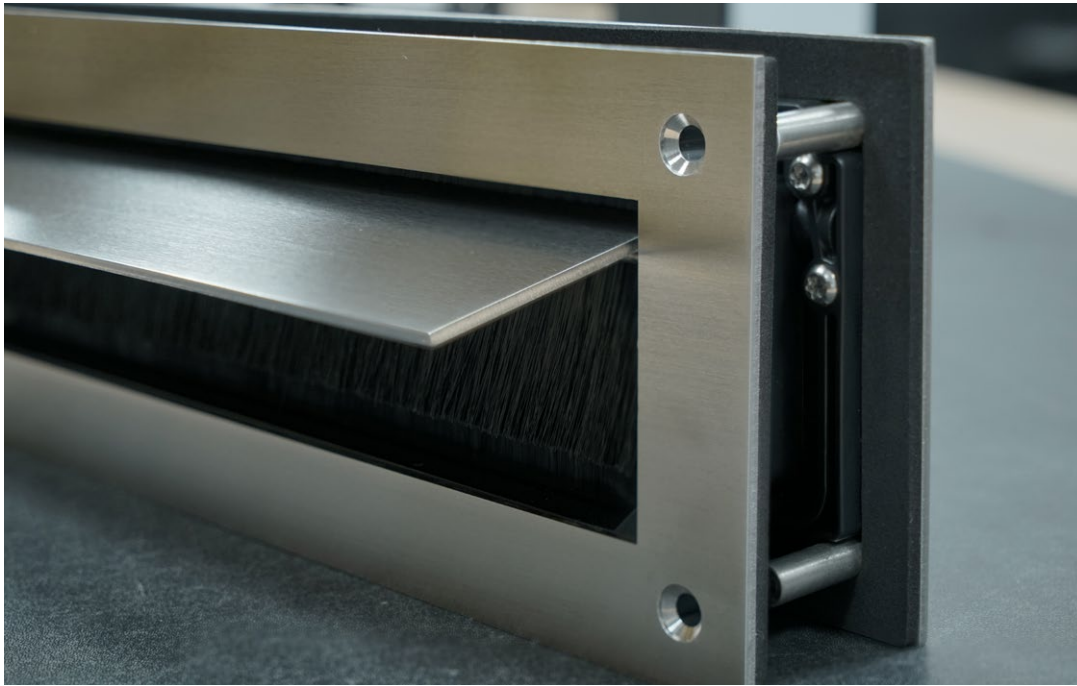
Telescopic Liner

Weathersealing



LP400 Sleeved Letter Plate Benefits

- Made from high quality 316 Marine Grade Stainless Steel
- Designed to suit both Classic, Heritage and Contemporary style doors
- Achieved 'Best in Class' BS6375-1 Weather Test against air, wind & water
- Successfully used in PAS24 Security Test
- Integral gaskets, brushes and telescopic liner for enhanced weather and draught protection
- Built-in inner security flap to prevent a 'fishing' attack
- Guaranteed to last for the lifetime of the door
- Available in 5 Stunning finishes, plus Black antique finish
- Part of a Suited Range







COASTAL

Shaping the future.

COASTAL GROUP

Head Office: Global House, Bojea Industrial Estate, St Austell, Cornwall, PL25 5RJ, UK

T 01726 871 025 E sales@coastal-group.com W coastal-group.com

For more inspiration, follow us on:



Like to see your finished door and window projects feature in our Inspiration Gallery?

Email Hi-Res photos of your projects to:
marketing@coastal-group.com