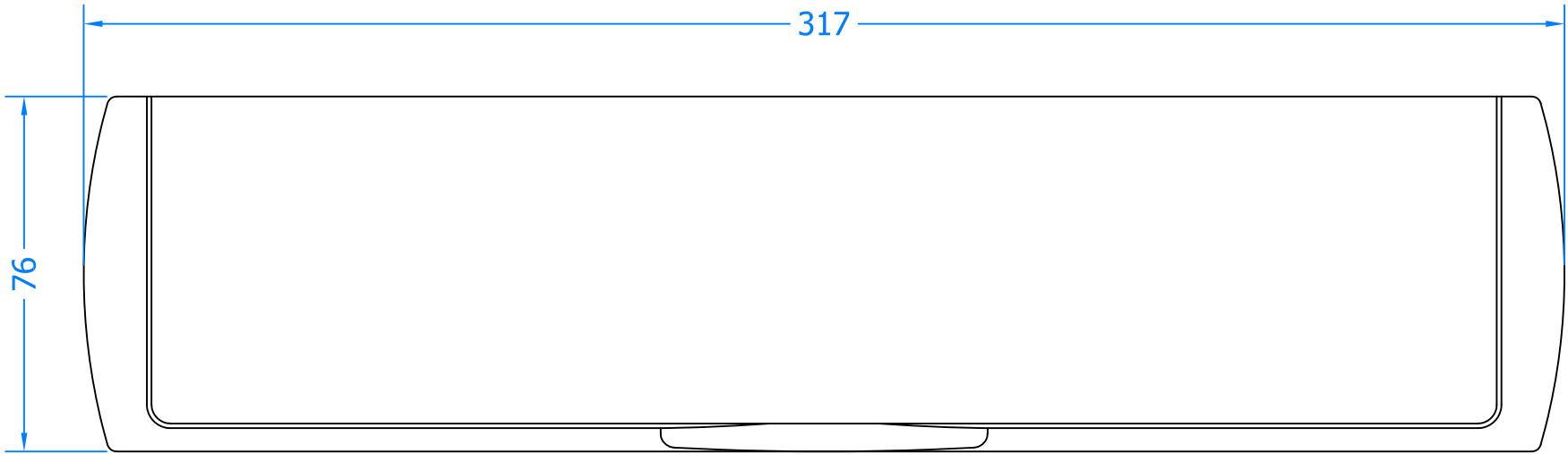
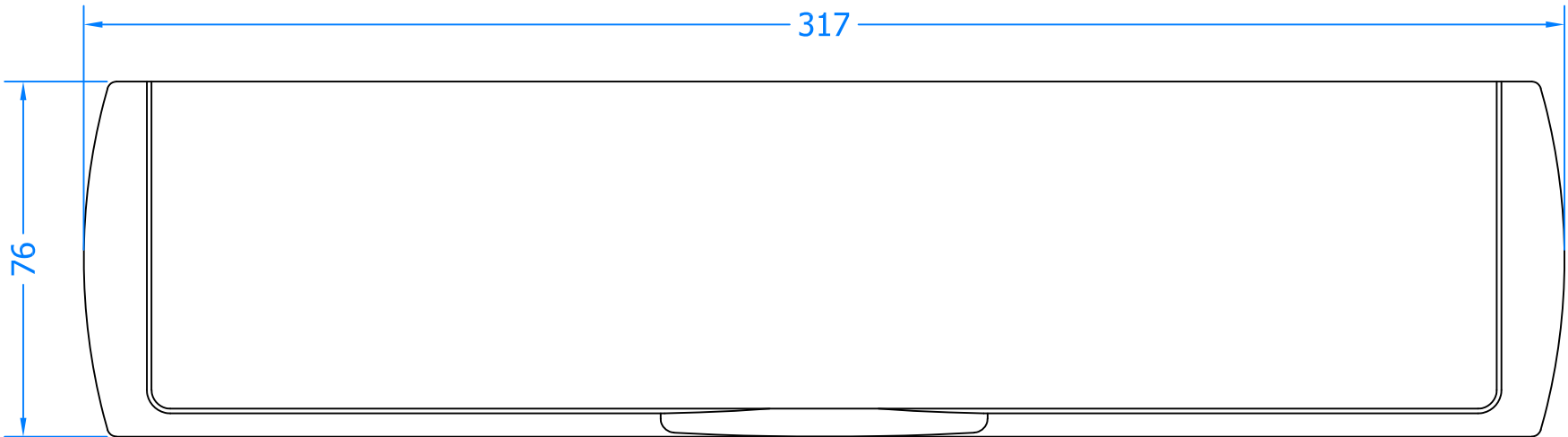
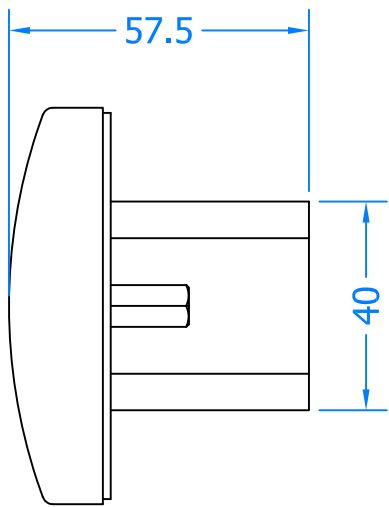


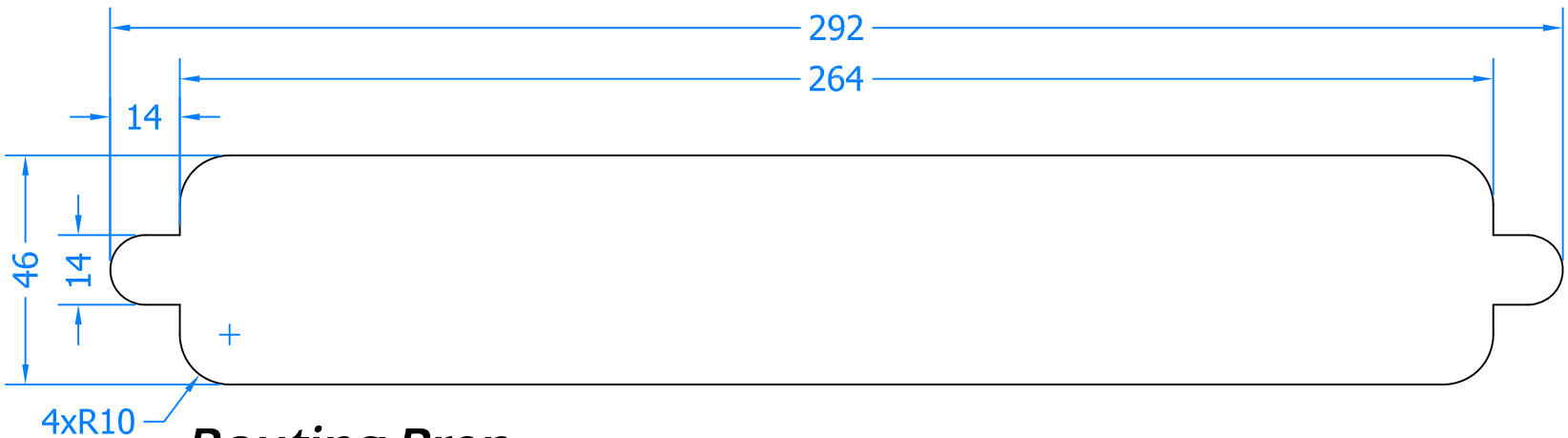
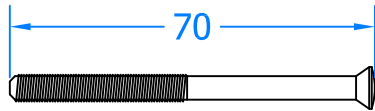
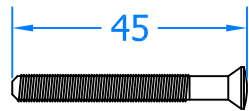
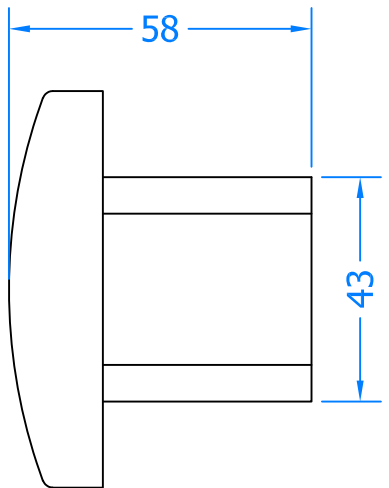
REVISIONS			
Revision	Description	Drawn	Date
A	Release	PW	14/11/17



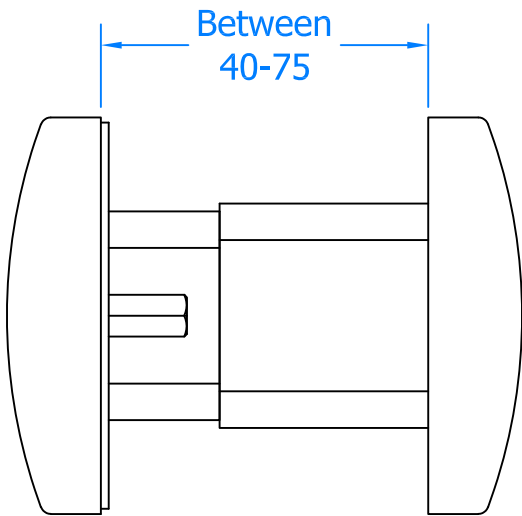
Internal Plate




External Plate



Routing Prep.





Global House, Bojea Industrial Estate, Trethowel, St Austell, PL25 5RJ
Telephone | 01726 871725 - Fax | 01726 871731
Email | sales@coastal-group.com - Web | www.coastal-group.com

Drawing Reference:

Coastal Group

Drawing Title:

LP310

Pro Style Letter Box

Product Range:

Letter Plates & Tidies

Additional Info:

Date Drawn:	19/04/2018
Drawn By:	Phil Walklett
Part Number:	LP310
File Name:	CG-LP310.dwg
Revision:	A
Drawing Scale:	Not to Scale
Sheet Number:	1 of 1

THIRD ANGLE PROJECTION

This drawing and specification are the property of Coastal Group, they are issued in strict confidence and shall not be reproduced, copied or used without written permission.