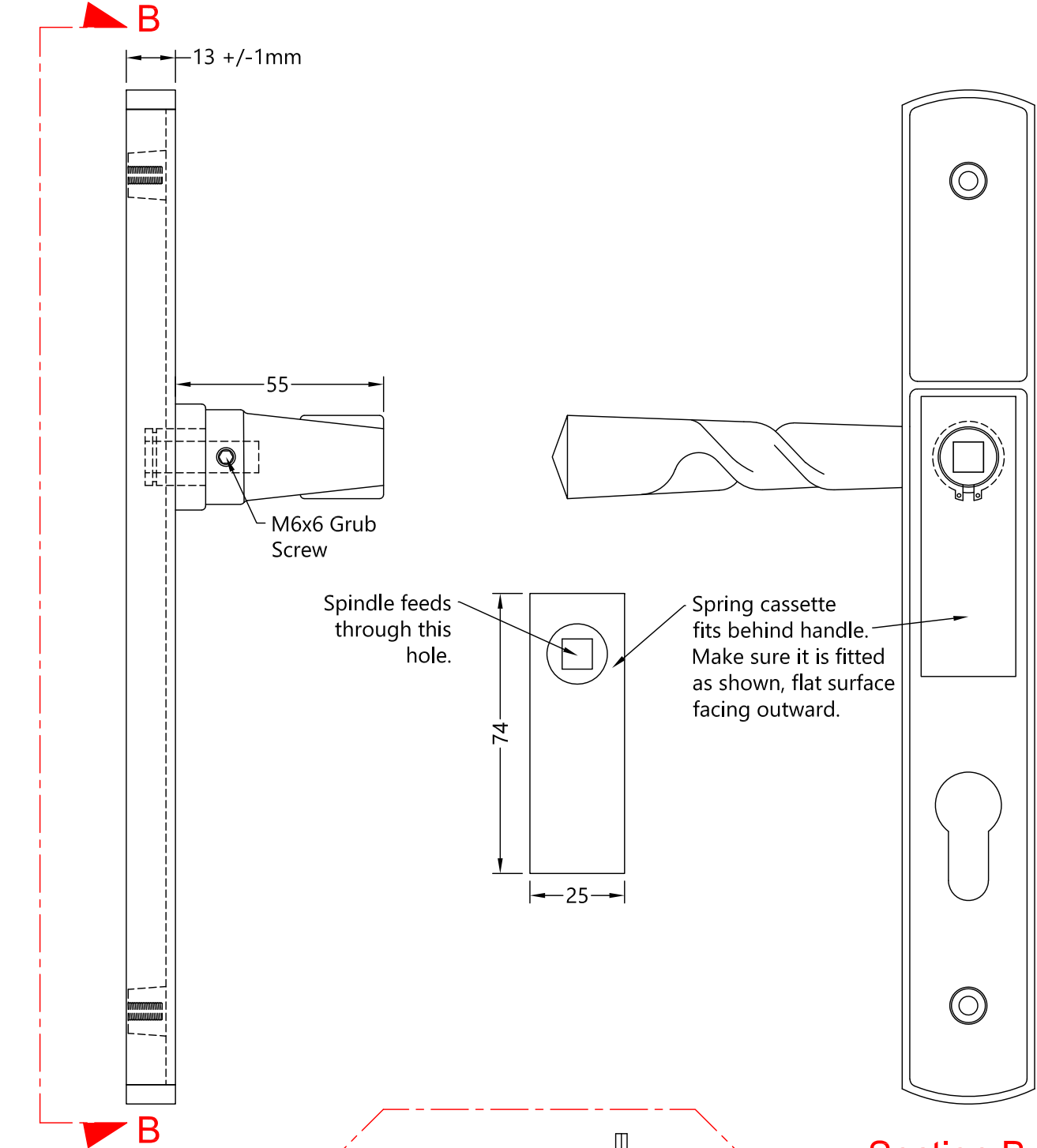
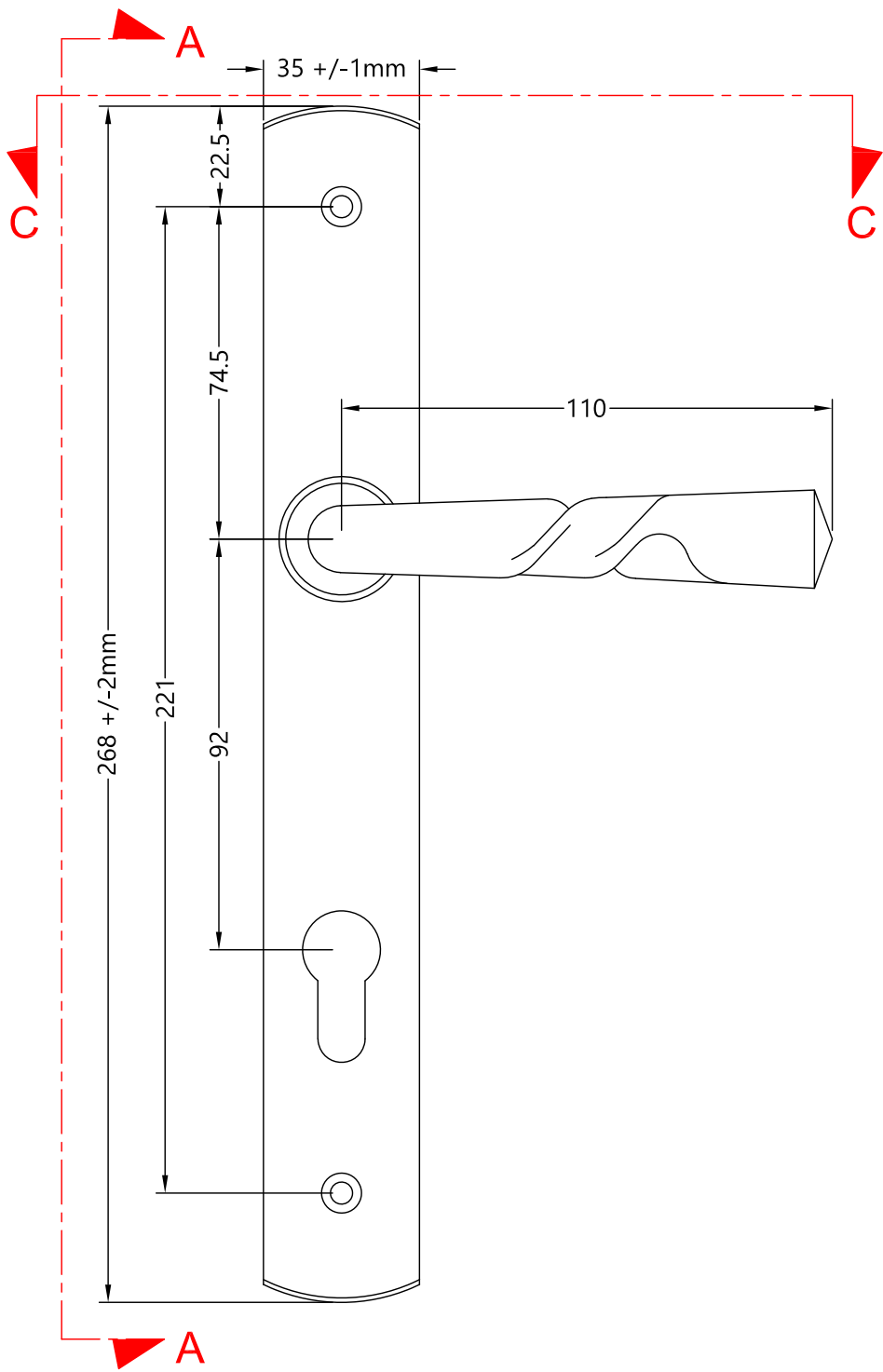


While every attempt has been made to ensure the accuracy and completeness of the information in this document some typographical or technical errors may exist. Coastal Group cannot accept responsibility for customers' losses resulting from the use of this document. Please also note that this drawing / design is subject to change without prior notice in accordance with our policy of continual product development. This drawing / design contains proprietary information that is protected by copyright and is property of Coastal Group. Coastal Group is at the leading edge in joinery hardware, customer care and quality are at the core of everything we do, you can be confident that a call to Coastal will be the only call you need for all your joinery hardware needs.

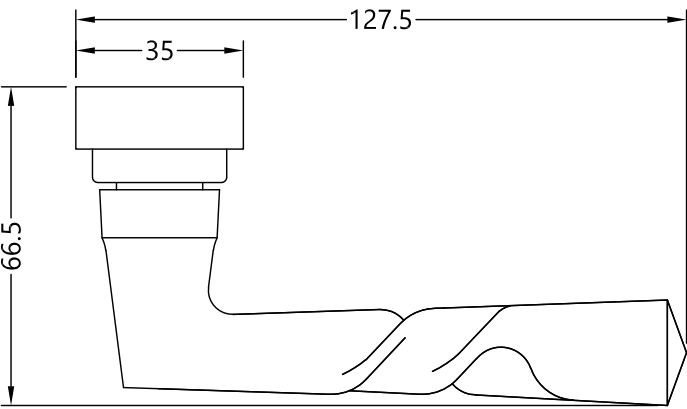
Revision History

Revision	Description	DRFT	CHK	Date
B	Moved fixing holes by 3mm	PW	BD	20/2/17
C	Updated Spindle & Fixing length.	PW	BD	10/5/17
D	Added Spring Cassette to Drawing.	PW	BD	26/7/17
E	Added slotted head screw type.	PW	BD	2/8/17
G	Changed screw from 65mm to 70mm Changes spindle length to 115mm Included new style spring cassette	PW	BD	20/3/18
H	Added grub screw, amended notes Altered spindle housing tolerances	PW	BD	28/6/18
I	Added 3mm Allen Key	PW	BD	6/8/18

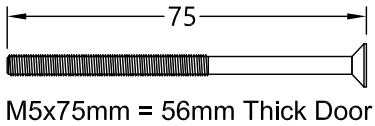


Section A-A

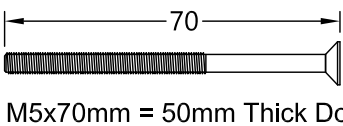
Section B-B



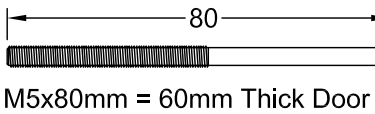
Section C-C



M5x75mm = 56mm Thick Door



M5x70mm = 50mm Thick Door



M5x80mm = 60mm Thick Door

Slotted Head M5 Fixing Bolts

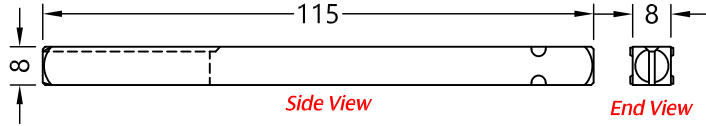


Slotted Head Type

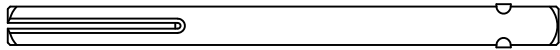
Grub Screw Cover Cap



3mm Allen Key - Silver



Side View



Top View

Spindle Supplied: 8x8x115mm
Suitable for 50/60mm Door Thickness



Global House
Bojea Industrial Estate
Trethowel, St Austell
Cornwall, PL25 5RJ
t | 01726 871025 f | 01726 871731
e | sales@coastal-group.com
w | www.coastal-group.com

Customer Reference:	
Coastal Group	
Drawing Title:	
CO7100 - Narrow Backplate Dual Sprung Multipoint Lock Handle	
Product Range / Project Reference	
Villand Antique - 92mm Handle Set	
Other Information:	Dual Sprung Cassette
Date Drawn:	06/08/2018
Drawn By:	Phil Walklett
Drawing Number:	CG-CO7100.dwg
Revision:	I
THIRD ANGLE PROJECTION	
This drawing and specification are the property of Coastal Group, they are issued in strict confidence and shall not be reproduced, copied or used without written permission.	
Scale: None	Sheet: 1 of 1