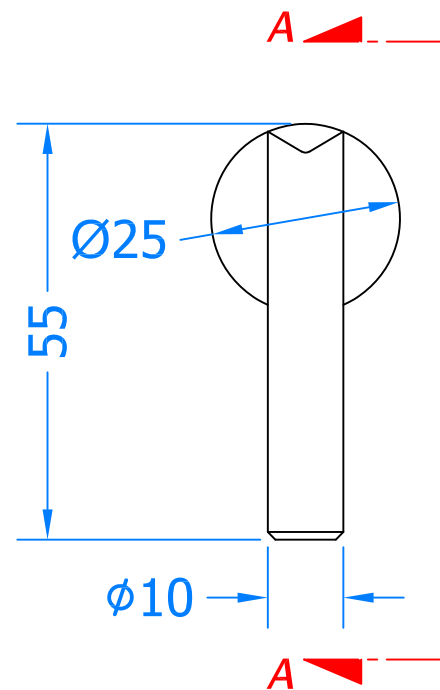
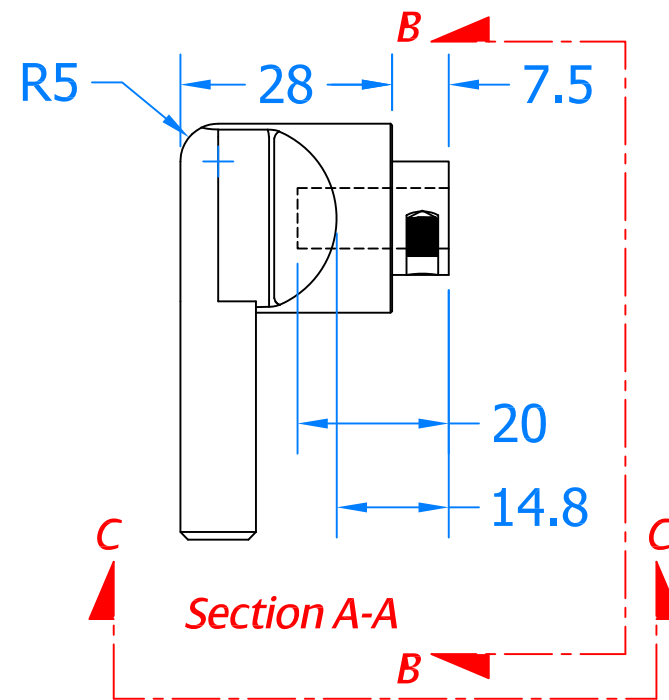


REVISIONS			
Revision	Description	Drawn	Date
A	Release	PW	14/06/18

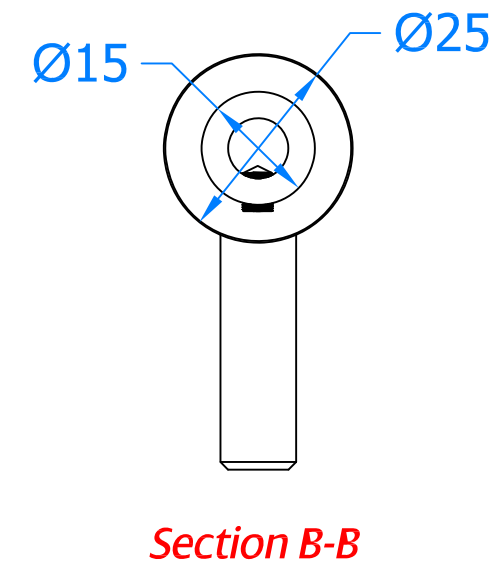
Front View



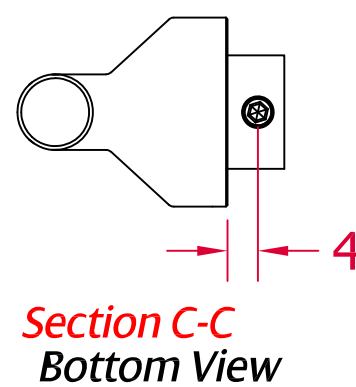
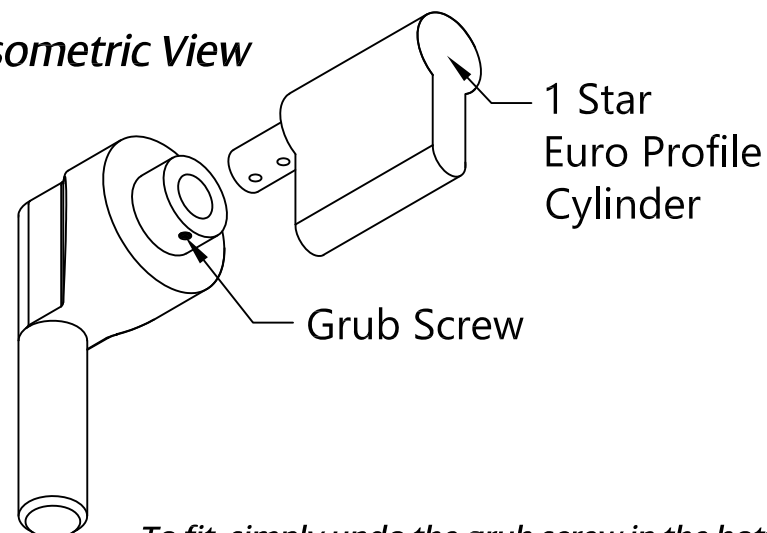
Side View



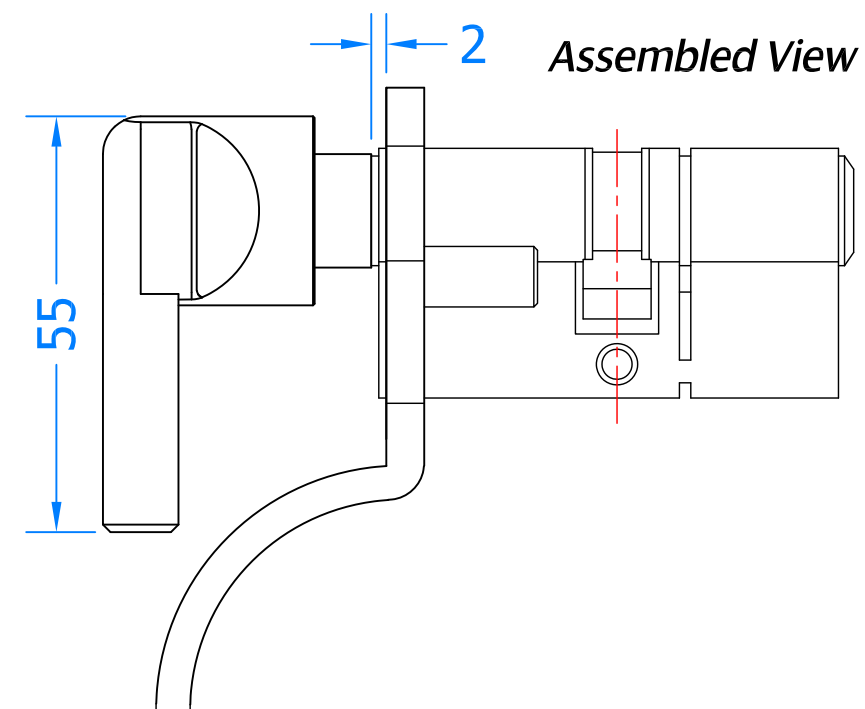
Rear View



Isometric View



To fit, simply undo the grub screw in the bottom of the existing thumb turn then remove, slide on the new thumb turn and tighten up the grub screw.



	
Global House, Bojea Industrial Estate, Trethowel, St Austell, PL25 5RJ Telephone 01726 871725 - Fax 01726 871731 Email sales@coastal-group.com - Web www.coastal-group.com	
Drawing Reference:	
Coastal Group	
Drawing Title:	
GZT Bar Type Thumb Turn For 1 Star ISEO Cylinders	
Product Range:	
Additional Info: For use on the grub screw 1 star ISEO Euro Profile Cylinders	
Date Drawn:	14/06/2018
Drawn By:	Phil Walklett
Part Number:	GZT-BTT-316-SSS
File Name:	BP-GZT-BTT-316-SSS.dwg
Revision:	A
Drawing Scale:	1:1@A3
Sheet Number:	1 of 1
THIRD ANGLE PROJECTION	This drawing and specification are the property of Coastal Group, they are issued in strict confidence and shall not be reproduced, copied or used without written permission.