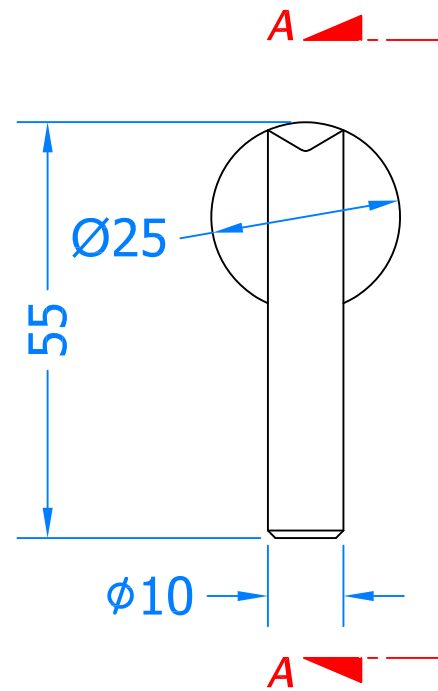
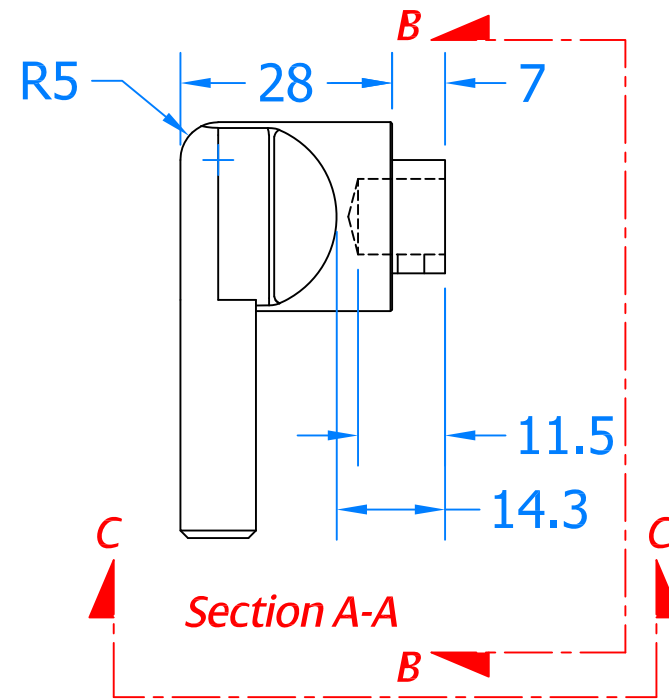


REVISIONS			
Revision	Description	Drawn	Date
A	Release	PW	14/06/18

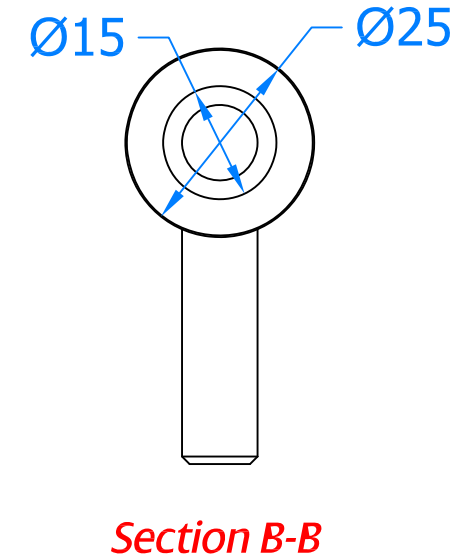
Front View



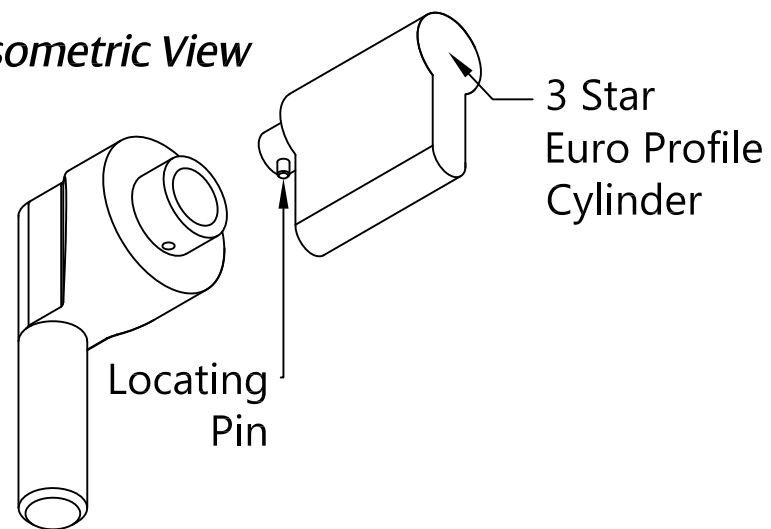
Side View



Rear View

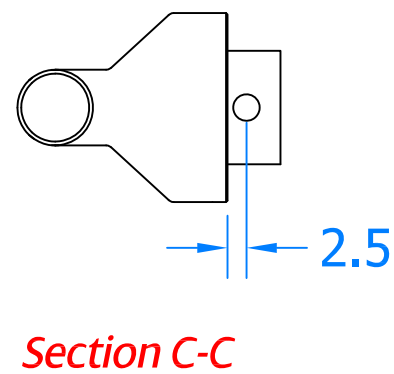


Isometric View

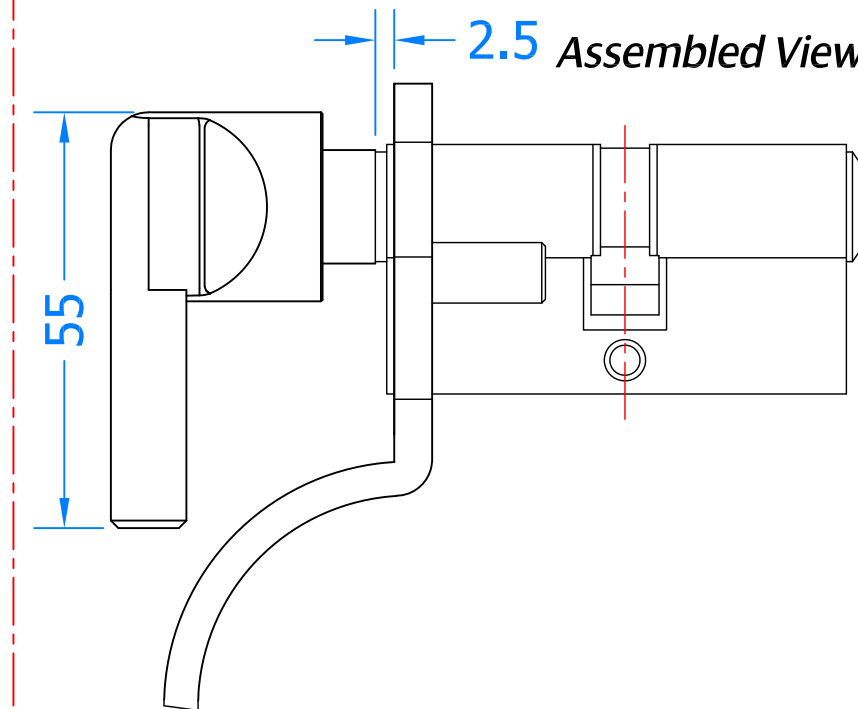




To fit, simply push the locating pin in on the bottom of the existing thumb turn then remove, slide on the new thumb turn on until the pin locates and locks in place.

Bottom View



Assembled View





Global House, Bojea Industrial Estate, Trethowel, St Austell, PL25 5RJ
Telephone | 01726 871725 - Fax | 01726 871731
Email | sales@coastal-group.com - Web | www.coastal-group.com

Coastal Group

Drawing Title:
**KPT Bar Type Thumb Turn
For 3 Star KABA Cylinders**

Product Range:

Additional Info: For use on the push pin 3 star KABA
Euro Profile Cylinders

Date Drawn: 14/06/2018

Drawn By: Phil Walklett

Part Number: KPT-BTT-316-SSS


File Name: BP-KPT-BTT-316-SSS.dwg

Revision: A

Drawing Scale: 1:1@A3

Sheet Number: 1 of 1

THIRD ANGLE PROJECTION



This drawing and specification are the property of Coastal Group, they are issued in strict confidence and shall not be reproduced, copied or used without written permission.