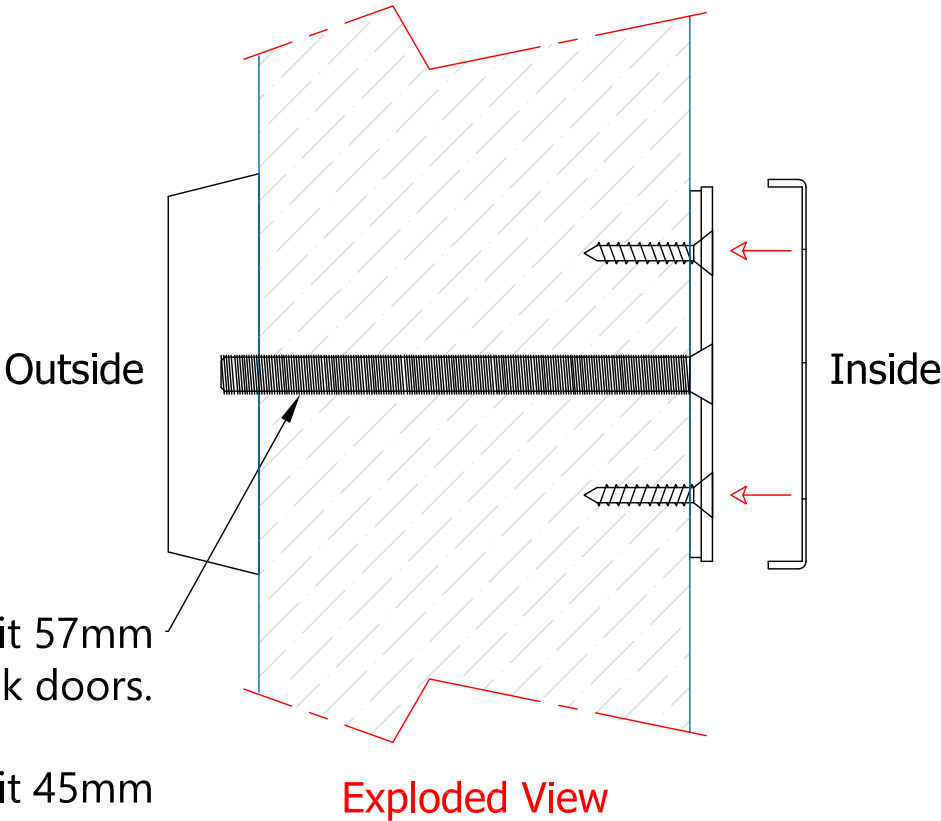
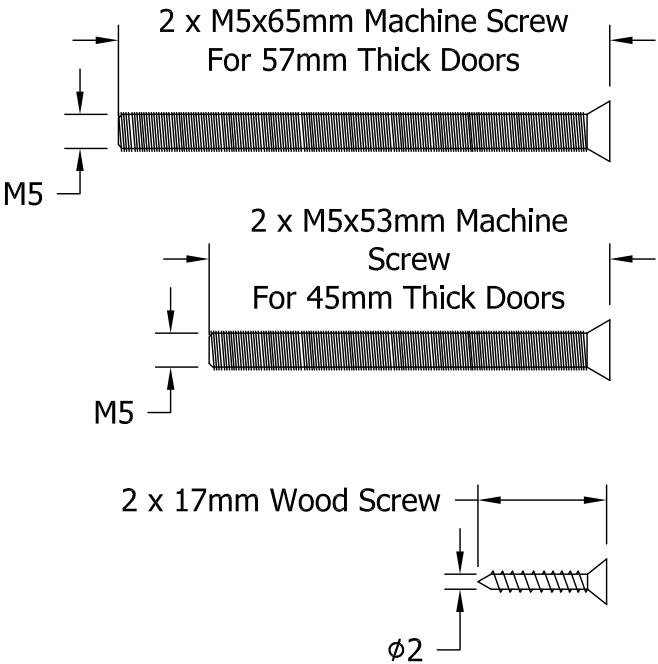
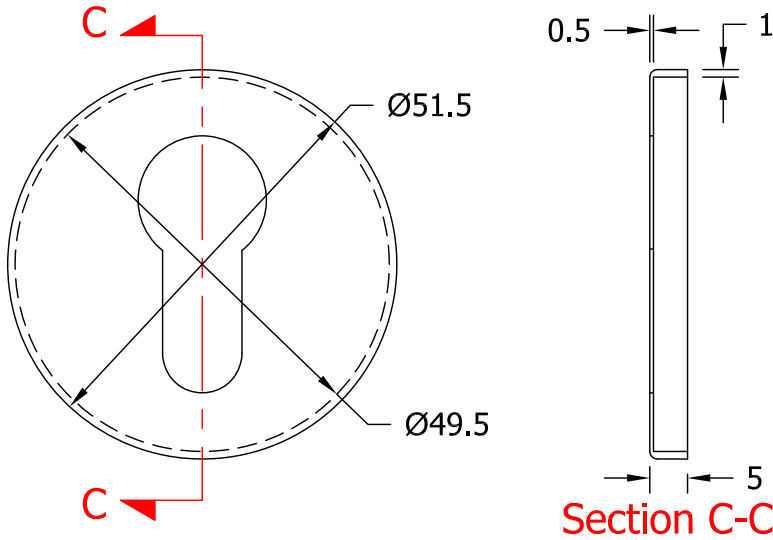
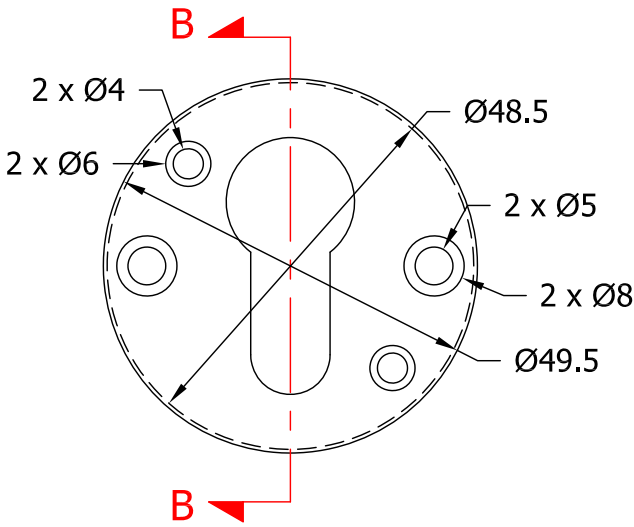
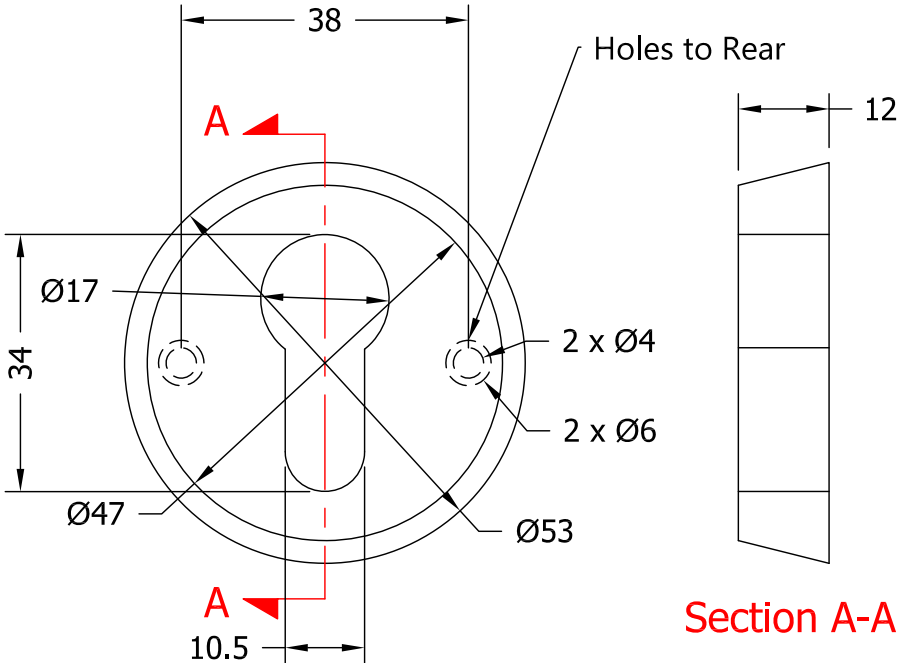



While every attempt has been made to ensure the accuracy and completeness of the information in this document some typographical or technical errors may exist. Blu Performance cannot accept responsibility for customers' losses resulting from the use of this document. Please also note that this drawing / design is subject to change without prior notice in accordance with our policy of continual product development. This drawing / design contains proprietary information that is protected by copyright and is property of Blu Performance. Blu Performance is at the leading edge in joinery hardware, customer care and quality are at the core of everything we do, you can be confident that a call to Blu will be the only call you need for all your joinery hardware needs.

REVISIONS						
CHGE	LTR	DESCRIPTION	DRFT	CHK	DATE	APPR
	B	Changed Fixing Bolts	PW		11/10/16	



WHATS INCLUDED IN THE BOX	
QTY	DESCRIPTION
1	EXTERNAL SOLID ESCUTCHEON
1	INTERNAL ESCUTCHEON PLATE
1	ESCUTCHEON COVER PLATE
2	M5x65mm MACHINE SCREWS
2	M5x53mm MACHINE SCREWS
2	WOOD SCREWS



Global House
Bojea Industrial Estate
Trethowel, St Austell
Cornwall, PL25 5RJ
t | 01726 871025 f | 01726 871731
e | sales@blu-performance.com
w | www.blu-performance.com

Customer Reference:
blu Performance

Drawing Title:
**Security Euro Profile Escutcheon
316 Satin Stainless Steel**

Product Range / Project Reference
SE38-316-SSS

Other Information: Will work on doors up to 70mm thick.

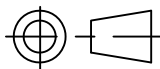
Date Drawn: 11/10/2016

Drawn By: Phil Walklett

Drawing Number: BP-SE38-316.dwg

Revision: B

THIRD ANGLE PROJECTION



This drawing and specification are the property of Coastal Group, they are issued in strict confidence and shall not be reproduced, copied or used without written permission.

Scale: 1:1@A3

Sheet: 1 of 1