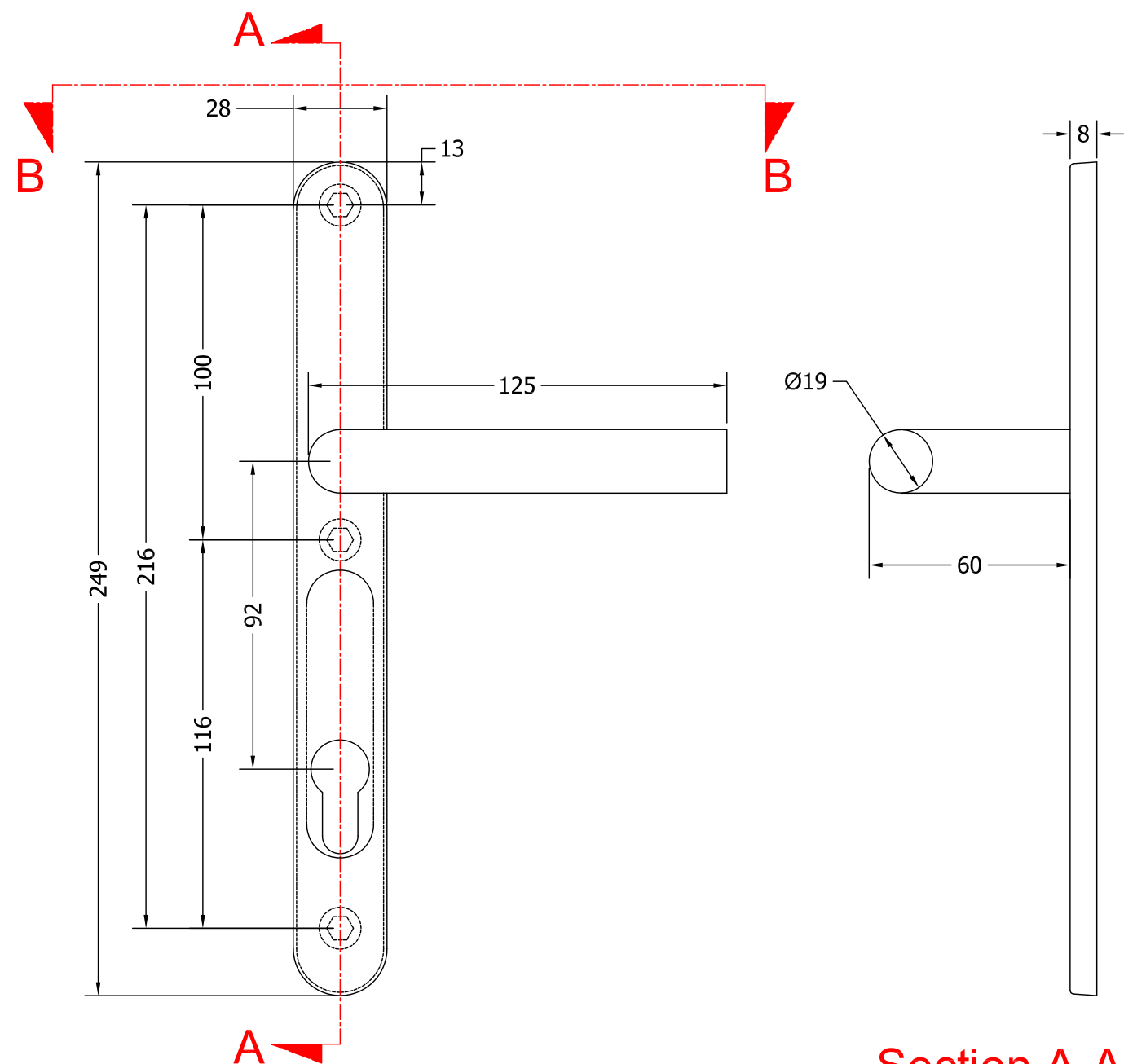


Revision History				
Revision	Description	Drawn By	Date	Approved By
A	Released	Phil Walklett	05/07/2016	PW / BD



Customer Reference:

blu Performance

Drawing Title:
Multipoint Handle Set
316 Satin Stainless Steel

Product Range / Project Reference

KM070-316

Other Information:	Will work on doors up to 80mm thick.
--------------------	--------------------------------------

Date Drawn:	05/07/2016
-------------	------------

Drawn By:	Phil Walklett
-----------	---------------

Drawing Number:

BP-KM070-316.dwg

THIRD ANGLE PROJECTION

[illegible]

Scale: NONE	Sh
--------------------	----

WHATS INCLUDED IN THE BOX	
QTY	DESCRIPTION
2	UNIVERSAL DOOR HANDLES
3	BOLT RECEIVER SLEEVES
3	60mm FIXING BOLTS
3	40mm FIXING BOLTS
1	8 x 8 x 190mm SPINDLE

All measurements are finished dimensions in MM