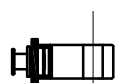
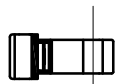
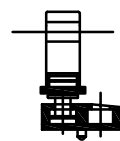


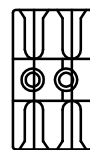
7mm Mushroom




Duplex / Keep Section Layout



Timber Mushroom Keep



 <p>Global House 3 Bojea Industrial Estate Trethowel, St Austell Cornwall, PL25 5RJ</p> <p>t 01726 871025 f 01726 871731 e sales@coastal-group.com w www.coastal-group.com</p>	
Customer Reference:	
EBB	
Drawing Title:	
BI-DIRECTIONAL MUSHROOM	
Product Range / Project Reference	
ESPAGNOLETTE BOLT	
Quote/Job No: N/A	
Date Drawn: 27/11/2015	
Drawn By: PHIL WALKLETT	
Drawing Number:	Revision:
CGEBB-BDEB.dwg	A
THIRD ANGLE PROJECTION	<p>This drawing and specification are the property of Coastal Group, they are issued in strict confidence and shall not be reproduced, copied or used without written permission.</p>
	
NOT TO SCALE	Sheet: 1 of 1