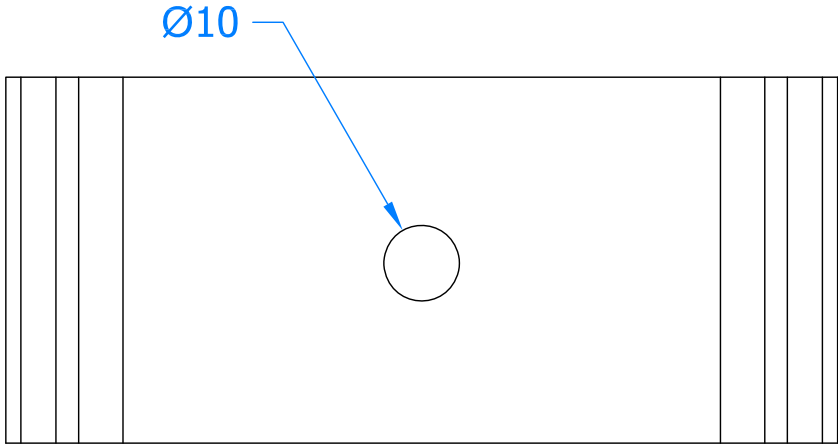
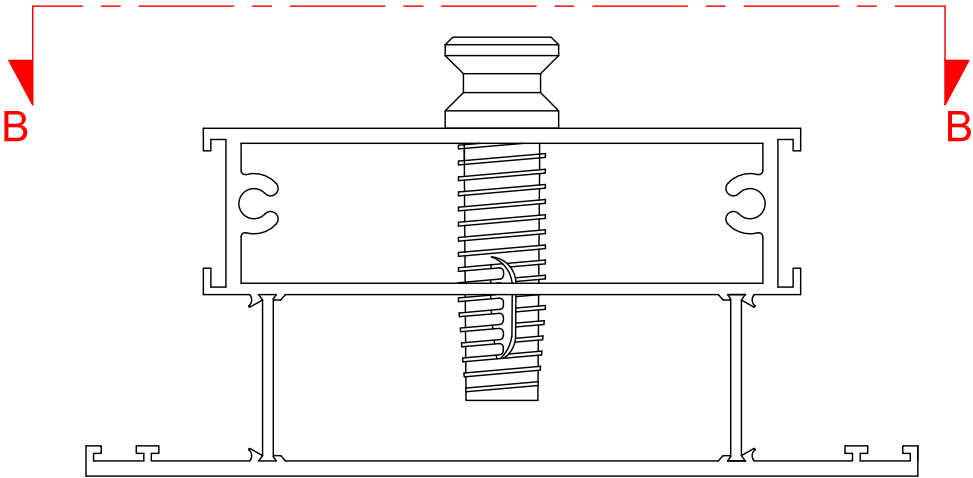


Revision History			
Revision	Description	Drawn By	Date
A	Released for Production	PW	1/3/17
B	Added assembled view and hole diameters	PW	30/1/18

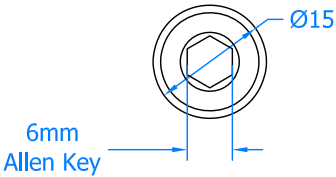
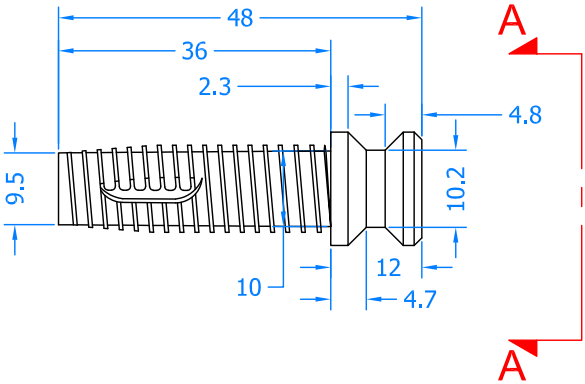
Do NOT drill this hole any larger than 11mm.



Section B-B



This bolt must grip on to 2 aluminum skins to tighten as shown above.



Section A-A

6mm
Allen Key



Global House
Bojea Industrial Estate
Trethowel, St Austell
Cornwall, PL25 5RJ

t | 01726 871724
f | 01726 871731
sales@blu-performance.com
www.blu-performance.com

Drawing Reference:

blu Performance

Drawing Title:

**Secret Fix Bolt
For Aluminium Sections**

Product Range:

Pull Bar Handle Fixing

Additional Info:

304 Marling Grade Stainless Steel
For HAB6

Date Drawn:

31/01/2018

Drawn By:

Phil Walklett

Part Number:

FX-10031-BLU

File Name:

BP-FX-10031-BLU.dwg

Revision:

B

Drawing Scale:

1:1 @ A4

Sheet Number:

1 of 1

THIRD ANGLE PROJECTION



This drawing and specification are the property of blu Performance, they are issued in strict confidence and shall not be reproduced, copied or used without written permission.