

## REVISION HISTORY

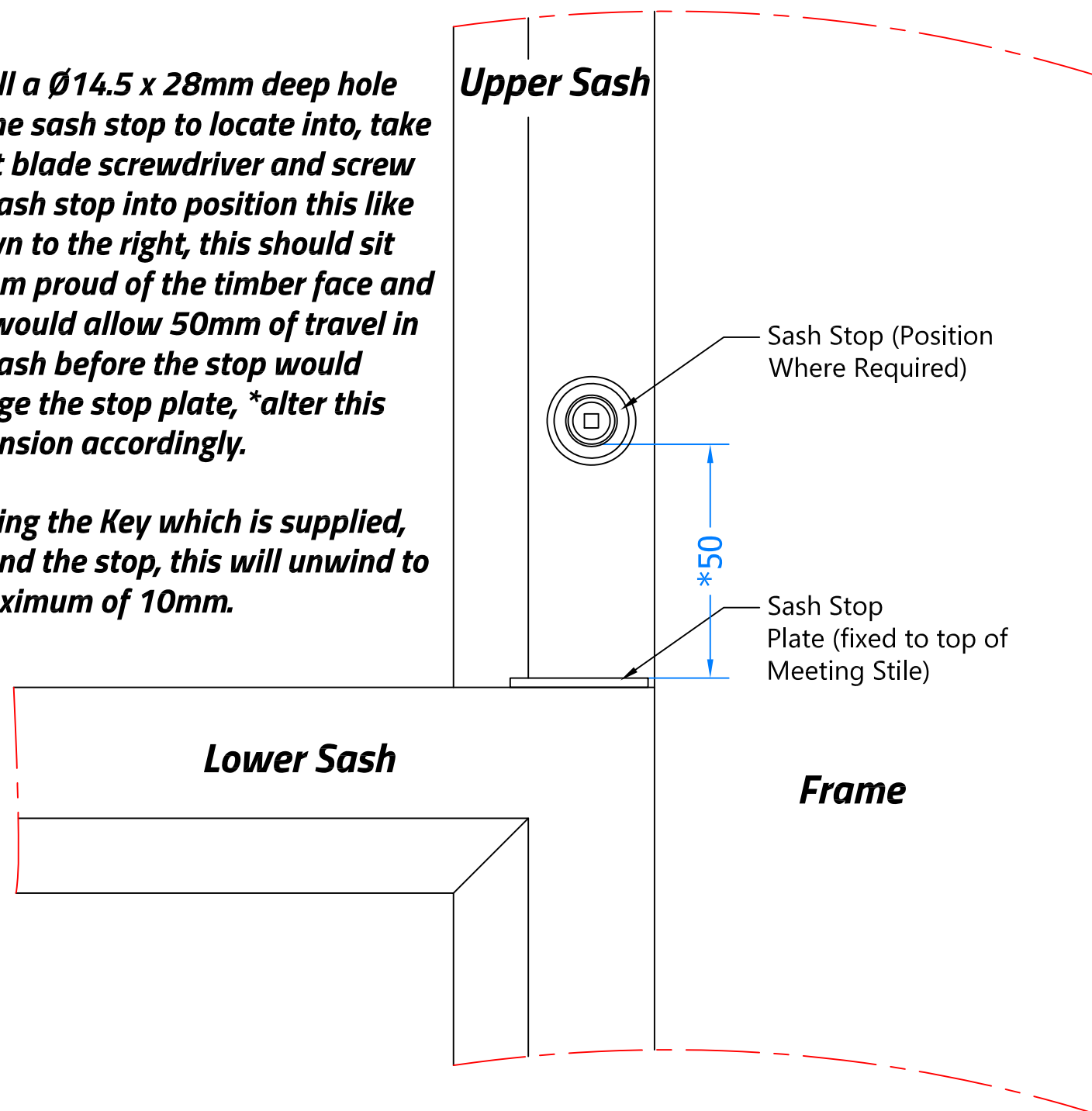
Revision	Description	Drawn	Date
A	Release	PW	18/10/18

# Installation Instructions

**Important information, if the centre of the stop is located any lower than 10mm from the top of the sash plate the key will hit the sash stop plate making it difficult to unwind the sash stop!**

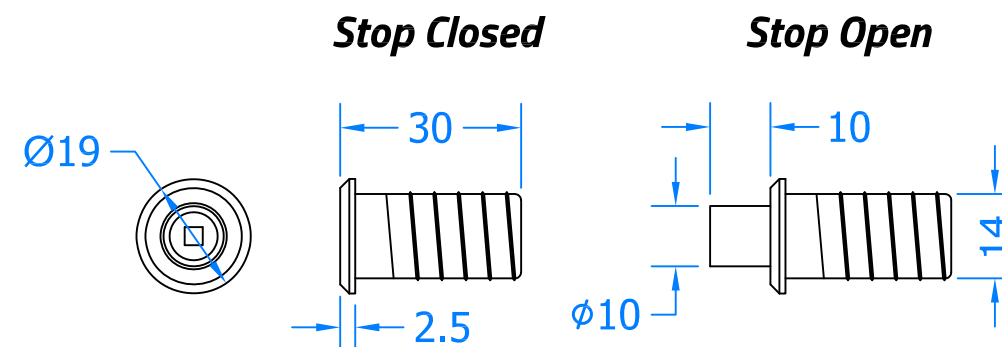
**1. Drill a  $\varnothing 14.5 \times 28\text{mm}$  deep hole for the sash stop to locate into, take a flat blade screwdriver and screw the sash stop into position this like shown to the right, this should sit 2.5mm proud of the timber face and this would allow 50mm of travel in the sash before the stop would engage the stop plate, \*alter this dimension accordingly.**

**2. Using the Key which is supplied, unwind the stop, this will unwind to a maximum of 10mm.**

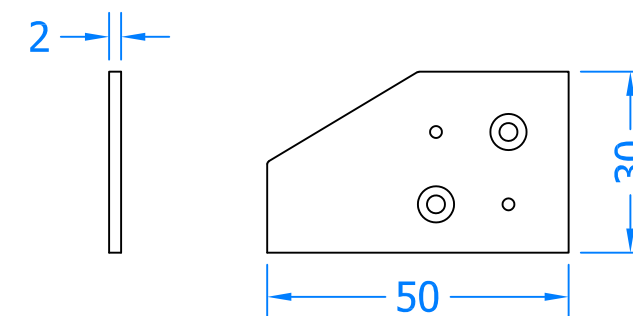


## Sliding Sash Section Viewed Internally

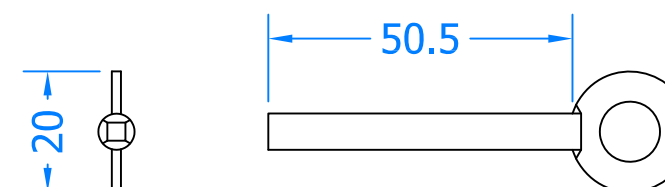
### Sash Stop



### Sash Stop Plate



### Sash Stop Key



**Innovating & Upgrading the Style, Performance & Longevity of External Doors & Windows Globally.**

**Coastal Specialist Ironmongery Ltd.**

Global House, Bojea Industrial Estate, Trethowel, St Austell, PL25 5RJ  
t | 01726 871725 - f | 01726 871731 - e | sales@coastal-group.com  
w | www.coastal-group.com

Drawing Title:

**SWS30  
Circular Sash Stop**

Product Range:

**Sliding Sash Window Gear**

Additional Info:

Date Drawn: 18/10/2018

Drawn By: Phil Walklett

Part Number: **SWS30**

File Name: CG-SWS30.dwg

Revision: **A**

Drawing Scale: Not to Scale

Sheet Number: 1 of 1

THIRD ANGLE PROJECTION

This drawing and specification are the property of Coastal, they are issued in strict confidence and shall not be reproduced, copied or used without written permission.