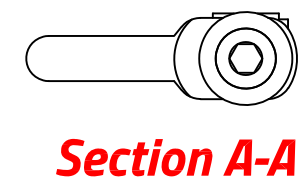
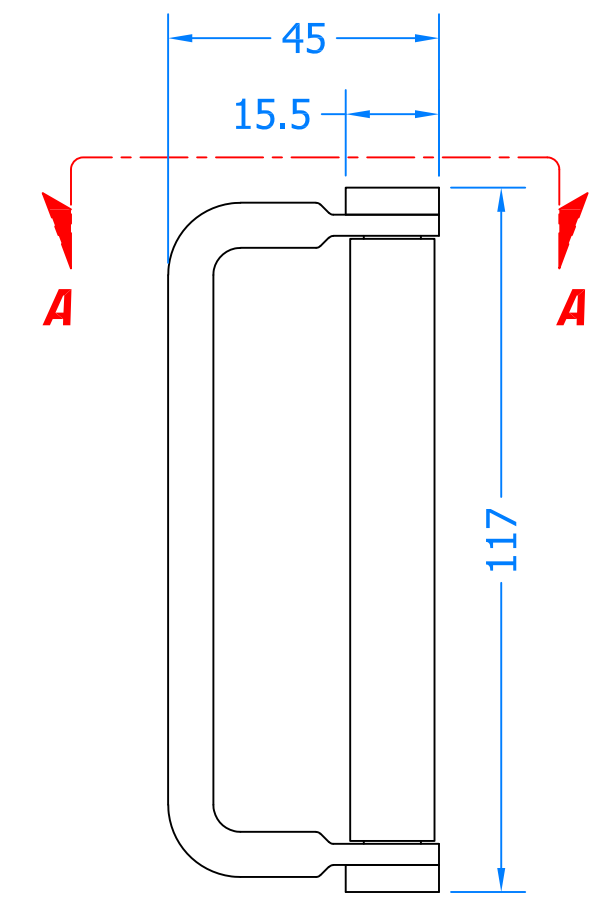
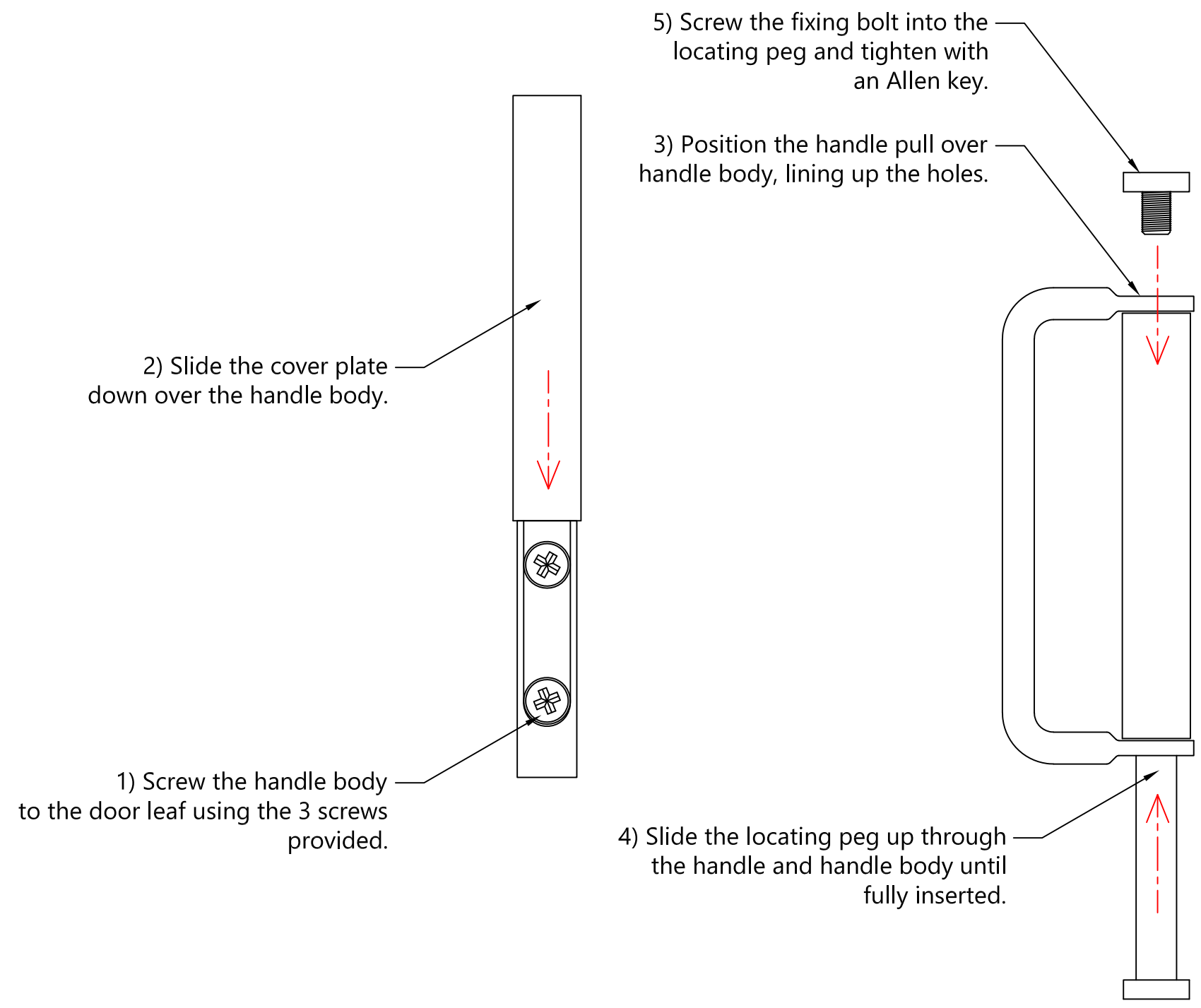


REVISION HISTORY			
Revision	Description	Drawn	Date
A	Release	PW	31/10/18

Fixing Instructions



Innovating & Upgrading the Style, Performance & Longevity of External Doors & Windows Globally.

Coastal Specialist Ironmongery Ltd.
 Global House, Bojea Industrial Estate, Trethowel, St Austell, PL25 5RJ
 t | 01726 871725 - f | 01726 871731 - e | sales@coastal-group.com
 w | www.coastal-group.com

Drawing Title:
CF10 Surface Fit Pull Handle

Product Range:
Sliding/Folding Door Systems

Additional Info:

Date Drawn:	31/10/2018
Drawn By:	Phil Walklett
Part Number:	CF10
File Name:	CG-CF10.dwg
Revision:	A
Drawing Scale:	1:1@A3
Sheet Number:	1 of 1

THIRD ANGLE PROJECTION

This drawing and specification are the property of Coastal, they are issued in strict confidence and shall not be reproduced, copied or used without written permission.