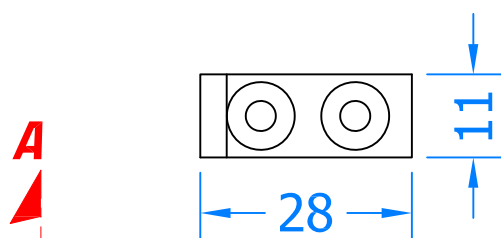


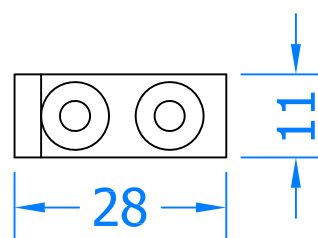
REVISION HISTORY

Revision	Description	Drawn	Date
A	Release	PW	08/10/18
B	Added LCS70 product to drawing	PW	23/01/19

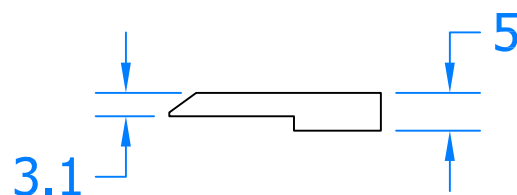
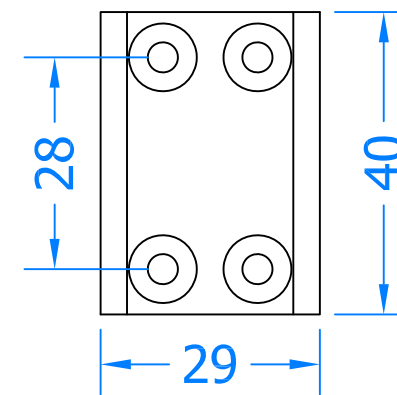
LCS50 (Stepped)



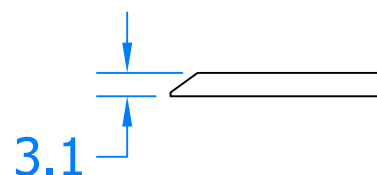
LCS60 (Flat)



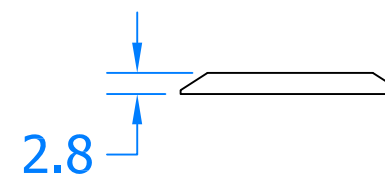
LCS70 (Flat)



Section A-A



Section A-A



Section A-A



*Innovating & Upgrading the Style,
Performance & Longevity of
External Doors & Windows Globally.*

Coastal Specialist Ironmongery Ltd.

Global House, Bojea Industrial Estate, Trethowel, St Austell, PL25 5RJ
t | 01726 871725 • f | 01726 871731 • e | sales@coastal-group.com
w | www.coastal-group.com

Drawing Title:

**LCS50, LCS60 & LCS70
EBT Stabilising Plates**

Product Range:

Window Hardware

Additional Info: Tricoat, for use with EBT Espagnolettes

Date Drawn: 23/01/2019

Drawn By: Phil Walklett

Part Number: **LCS50 / LCS60 / LCS70**

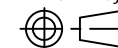
File Name: CG-LCS50-LCS60-LCS70.dwg

Revision: **B**

Drawing Scale: 1:1 @ A4

Sheet Number: 1 of 1

THIRD ANGLE PROJECTION



*This drawing and specification are
the property of Coastal, they are
issued in strict confidence and
shall not be reproduced, copied or
used without written permission.*