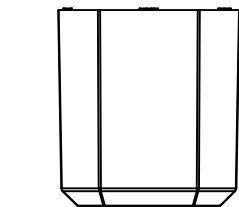
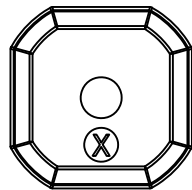
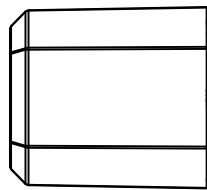
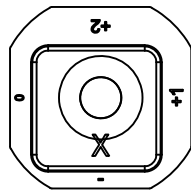
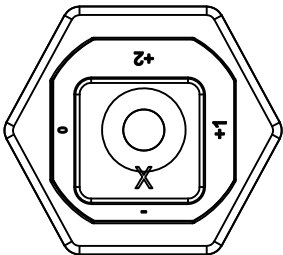
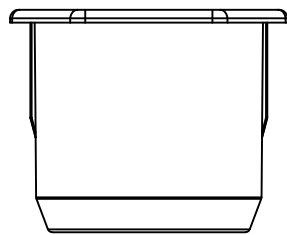


REVISIONS			
Revision	Description	Drawn	Date
A	Release	PW	31/8/18

Adjustable inner sleeve (rotate to adjust)

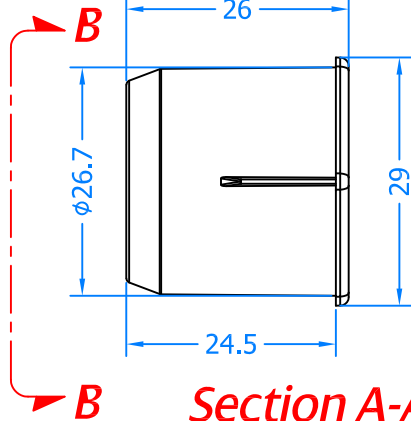
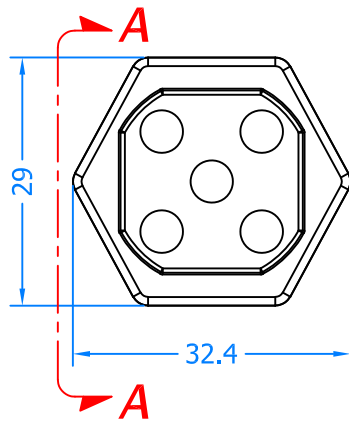


Place adj sleeve  
inside keep

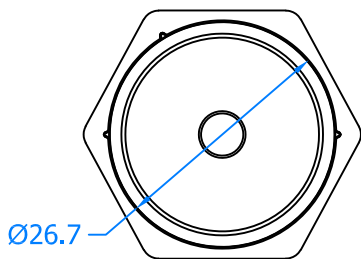


Assembled View



Outer Shootbolt Keep



Section A-A



Section B-B



Global House, Bojea Industrial Estate, Trethowel, St Austell, PL25 5RJ  
Telephone | 01726 871725 - Fax | 01726 871731  
Email | sales@coastal-group.com - Web | www.coastal-group.com

Drawing Reference:  
**Coastal Group**

Drawing Title:  
**MS32-TR SKG Slave Door Shootbolt Pocket Keep**

Product Range:  
**Tricoat Double Door Keeps**

Additional Info: 105540

Date Drawn: 31/08/2018

Drawn By: Phil Walklett

Part Number: MS32-TR

File Name: CG-MS32-TR.dwg

Revision: A

Drawing Scale: Not to Scale

Sheet Number: 1 of 1

THIRD ANGLE PROJECTION

This drawing and specification are the property of Coastal Group, they are issued in strict confidence and shall not be reproduced, copied or used without written permission.