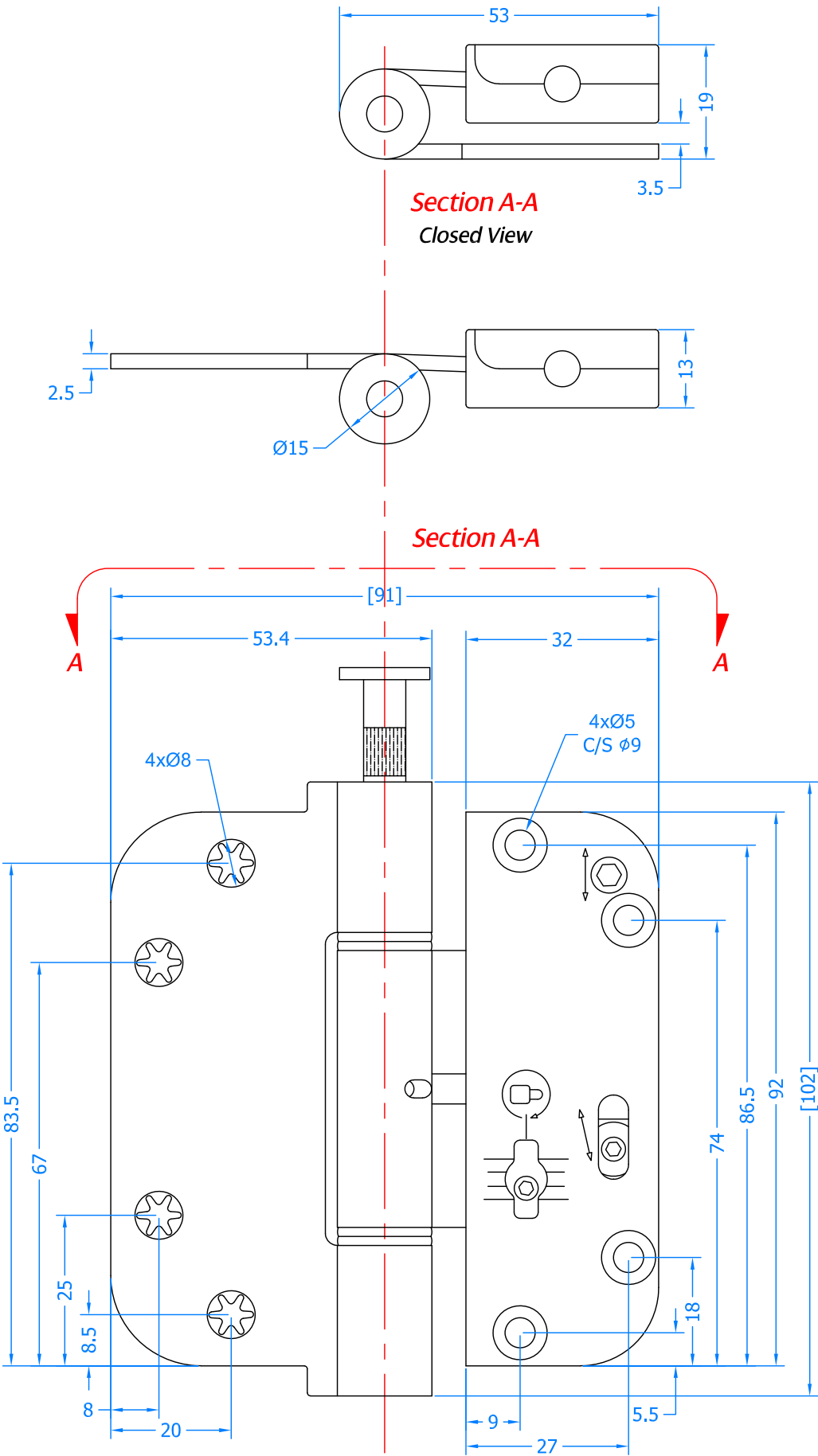


REVISION HISTORY

Revision	Description	Drawn	Date
A	Release	PW	21/03/17



 **Innovating & Upgrading the Style,  
Performance & Longevity of  
External Doors & Windows Globally.**

**Coastal Specialist Ironmongery Ltd.**

Global House, Bojea Industrial Estate, Trethowel, St Austell, PL25 5RJ  
t | 01726 871725 - f | 01726 871731 - e | sales@coastal-group.com  
w | www.coastal-group.com

Drawing Title:

**HT4  
3D Fully Adjustable Hinge**

Product Range:

**Door Hinge**

Additional Info:

Date Drawn: 21/03/2017

Drawn By: Phil Walklett


Part Number: HT4

File Name: CG-HT4.dwg

Revision: A

Drawing Scale: 1:1@A3

Sheet Number: 1 of 1

**THIRD ANGLE PROJECTION**  
 This drawing and specification are the property of Coastal, they are issued in strict confidence and shall not be reproduced, copied or used without written permission.