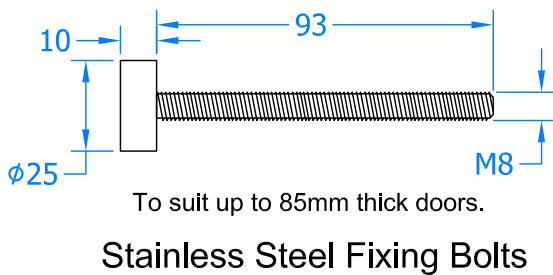
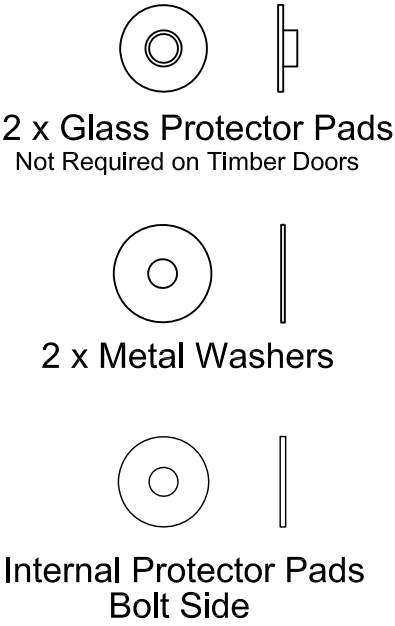
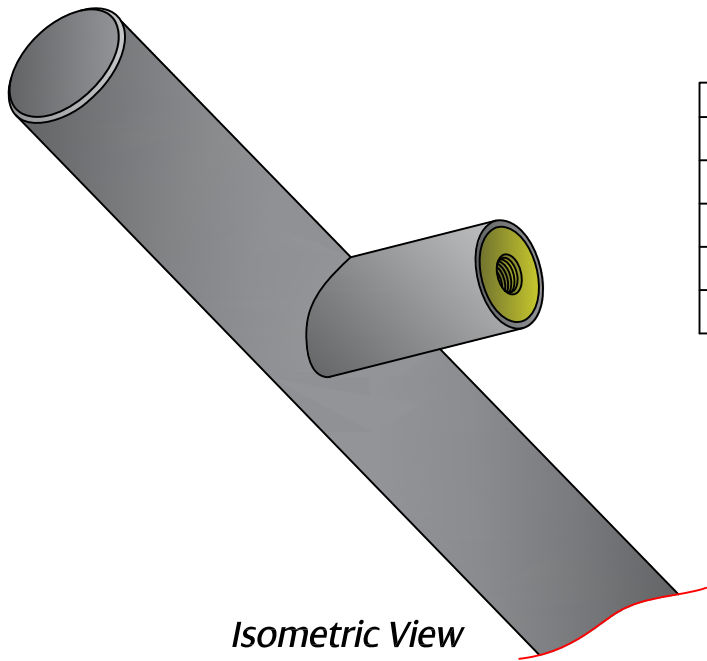
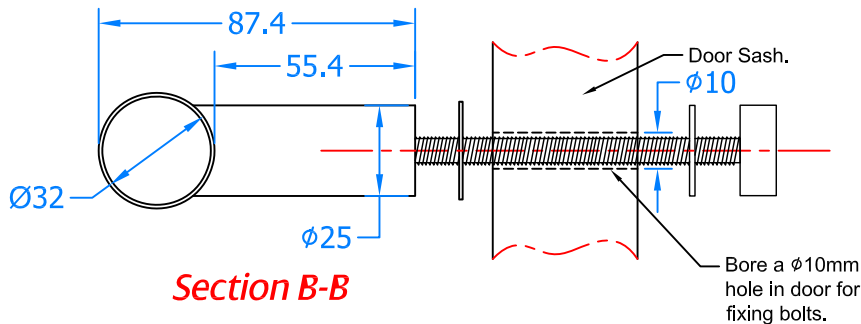
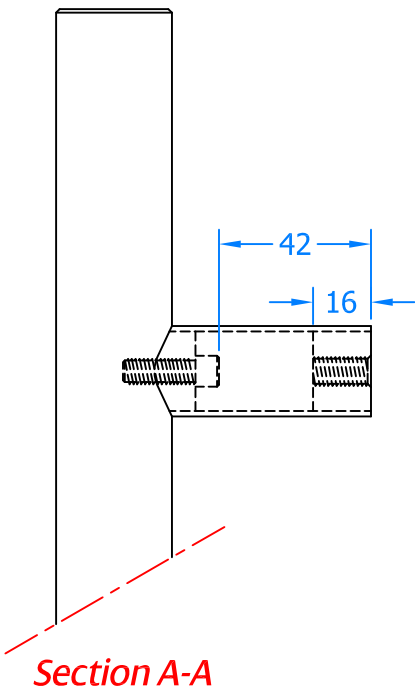
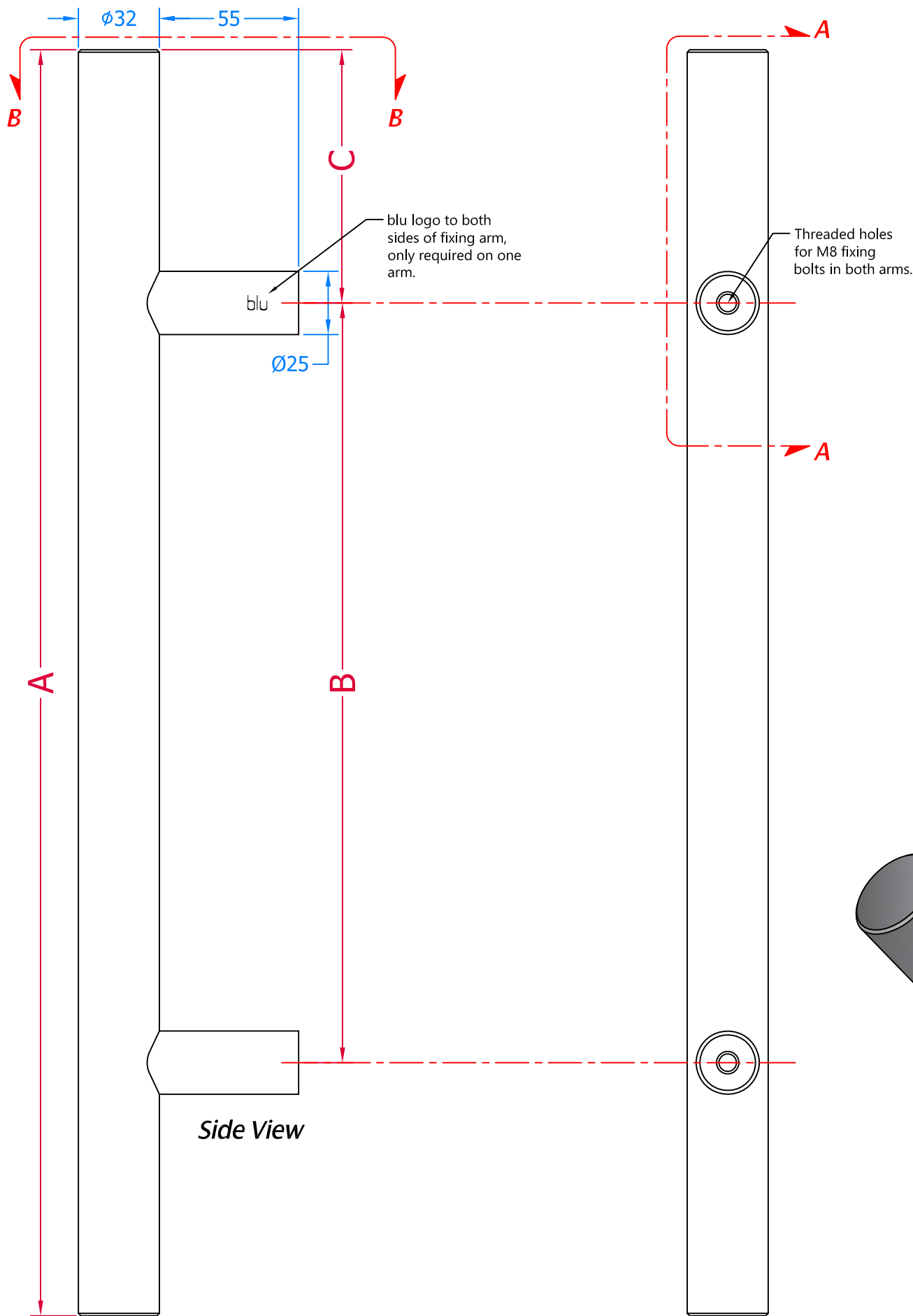


REVISION HISTORY

Revision	Description	DRFT	CHK	Date
A	Release	PW	BD	04/02/19



Part Number	Length (A)	Centre (B)	Distance (C)
HAB2-600-BF	600mm	400mm	100mm
HAB2-900-BF	900mm	700mm	100mm
HAB2-1200-BF	1200mm	1000mm	100mm
HAB2-1500-BF	1500mm	1300mm	100mm
HAB2-1800-BF	1800mm	1600mm	100mm



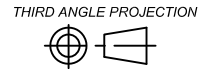
Global House
Bojea Industrial Estate
Trethowel, St Austell
Cornwall, PL25 5RJ
t | 01726 871724
f | 01726 871731
sales@blu-performance.com
www.blu-performance.com

blu™ Performance

Drawing Title:
**HAB2 - Round 'T' Bar Pull Handle
Bolt Fixing Method**

Product Range:
Stainless Steel Pull Handles

Additional Info:	
Date Drawn:	04/02/2019
Drawn By:	Phil Walklett
Part Number:	HAB2-(SIZE)-BF-SSS
File Name:	BP-HAB2-BF-SSS.dwg
Revision:	A
Drawing Scale:	Not to Scale
Sheet Number:	1 of 1



THIRD ANGLE PROJECTION
This drawing and specification are the property of blu Performance, they are issued in strict confidence and shall not be reproduced, copied or used without written permission.