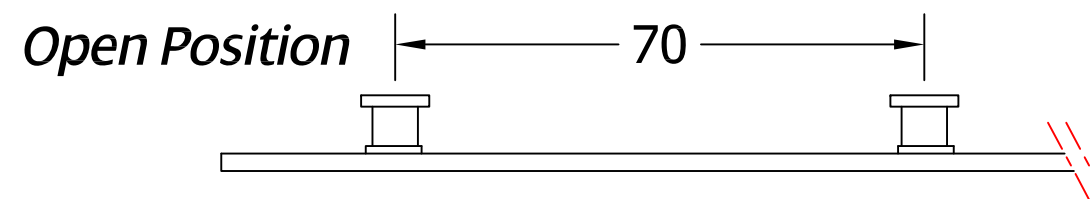
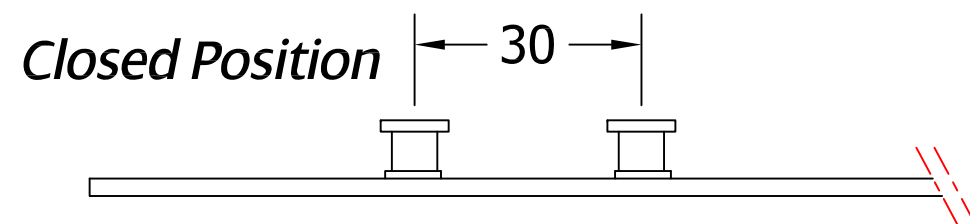
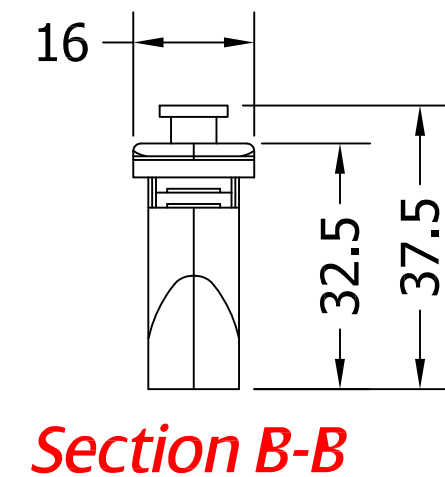
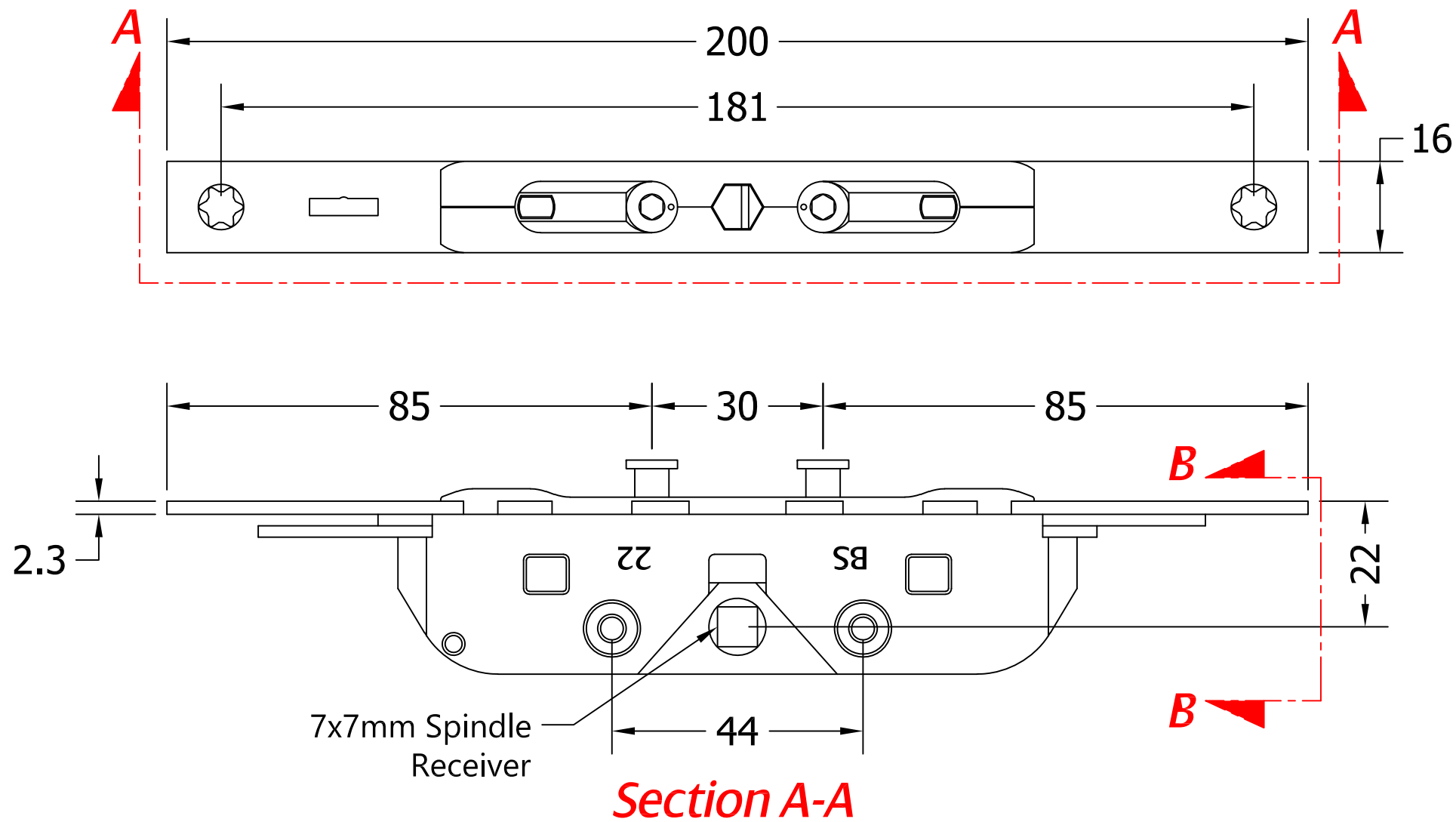
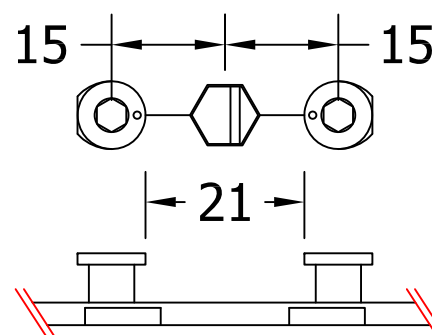


REVISIONS			
Revision	Description	Drawn	Date
A	Release	PW	2/3/2018



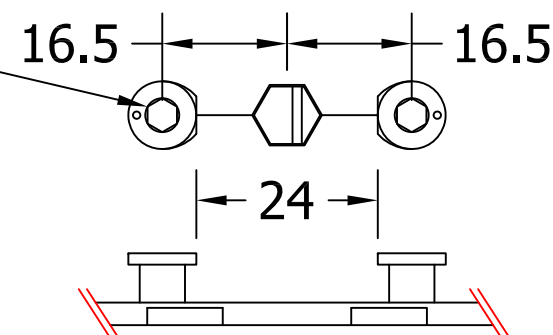
Each CAM moves 20mm

Mushroom CAM Adjustment Guide



Use Allen Key Here

+/- 3.0mm



 	
<p>Global House, Bojia Industrial Estate, Trethowel, St Austell, PL25 9JL Telephone : 01726 817125 - Fax : 01726 817131 Email : sales@coastal-group.com - Web : www.coastal-group.com</p>	
<p>Drawing Reference:</p>	
<p>Coastal Group</p>	
<p>Drawing Title:</p>	
<p>EBT0200 Tricoat Mushroom Espag Bolt 200mm</p>	
<p>Product Range:</p>	
<p>Espagnolette Bolts</p>	
<p>Additional Info:</p>	<p>7.7mm CAM / 1 Locking Point 22mm Backset</p>
<p>Date Drawn:</p>	<p>02/03/2018</p>
<p>Drawn By:</p>	<p>Phil Walklett</p>
<p>Part Number:</p>	<p>EBT0200-22-TR</p>
<p>File Name:</p>	<p>CG-EBT0200-22-TR.dwg</p>
<p>Revision:</p>	<p>A</p>
<p>Drawing Scale:</p>	<p>1:1@A3</p>
<p>Sheet Number:</p>	<p>1 of 1</p>
<p>THIRD ANGLE PROJECTION</p> 	<p><i>This drawing and specification are the property of Coastal Group, they are issued in strict confidence and shall not be reproduced, copied or used without written permission.</i></p>