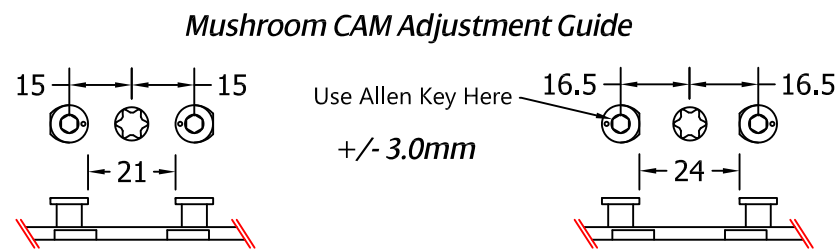
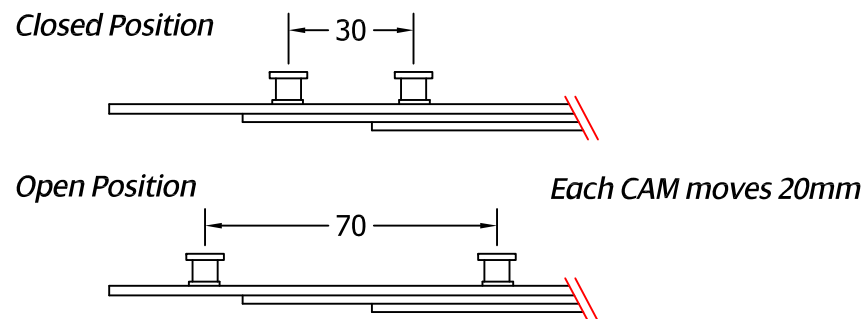
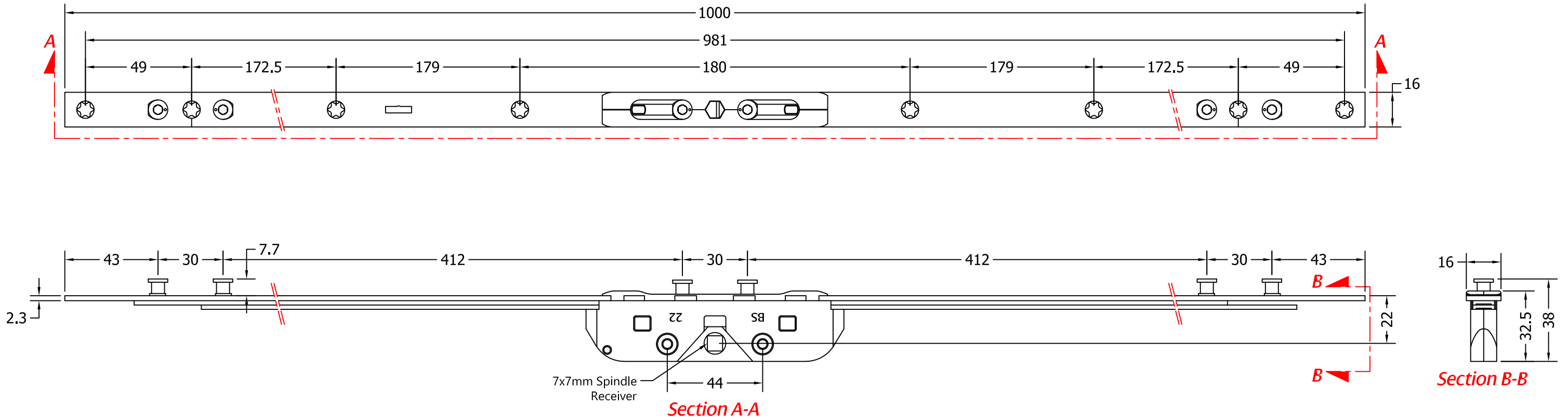


## REVISIONS

Revision	Description	Drawn	Date
A	Release	PW	2/3/2018



**COASTAL GROUP**

Global House, Bojea Industrial Estate, Trethowel, St Austell, PL25 5RJ  
Telephone | 01726 871725 - Fax | 01726 871731  
Email | sales@coastal-group.com - Web | www.coastal-group.com

**Drawing Reference:**

**Coastal Group**

**Drawing Title:**

**EBT1000 Tricoat  
Mushroom Espag Bolt 1000mm**

**Product Range:**

**Espagnolette Bolts**

**Additional Info:** 7.7mm CAM / 3 Locking Points  
22mm Backset

**Date Drawn:** 02/03/2018

**Drawn By:** Phil Walklett

**Part Number:** EBT1000-22-TR

**File Name:** CG-EBT1000-22-TR.dwg

**Revision:** A

**Drawing Scale:** No Scale

**Sheet Number:** 1 of 1

**THIRD ANGLE PROJECTION**

This drawing and specification are the property of Coastal Group, they are issued in strict confidence and shall not be reproduced, copied or used without written permission.