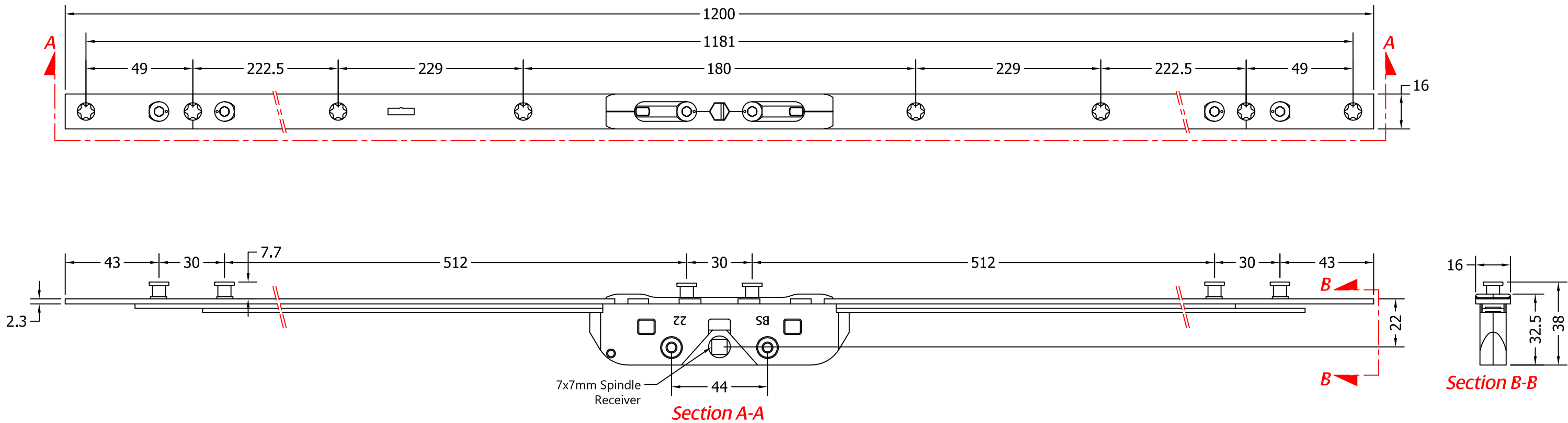
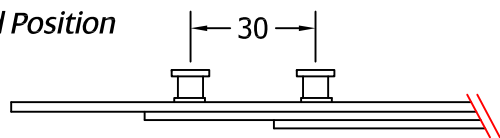


REVISIONS

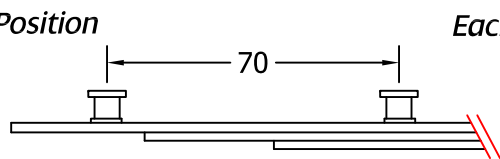
Revision	Description	Drawn	Date
A	Release	PW	2/3/2018



Closed Position

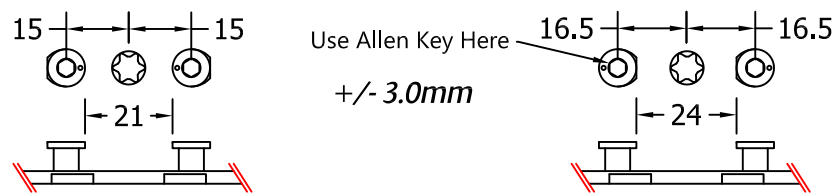


Open Position



Each CAM moves 20mm

Mushroom CAM Adjustment Guide





Global House, Bojea Industrial Estate, Trethowel, St Austell, PL25 5RJ
Telephone | 01726 871725 - Fax | 01726 871731
Email | sales@coastal-group.com - Web | www.coastal-group.com

Drawing Reference:

Coastal Group

Drawing Title:

**EBT1200 Tricoat
Mushroom Espag Bolt 1200mm**

Product Range:

Espagnolette Bolts

Additional Info:

7.7mm CAM / 3 Locking Points
22mm Backset

Date Drawn: 02/03/2018

Drawn By: Phil Walklett

Part Number: EBT1200-22-TR

File Name: CG-EBT1200-22-TR.dwg

Revision: A

Drawing Scale: No Scale

Sheet Number: 1 of 1

THIRD ANGLE PROJECTION

This drawing and specification are the property of Coastal Group, they are issued in strict confidence and shall not be reproduced, copied or used without written permission.