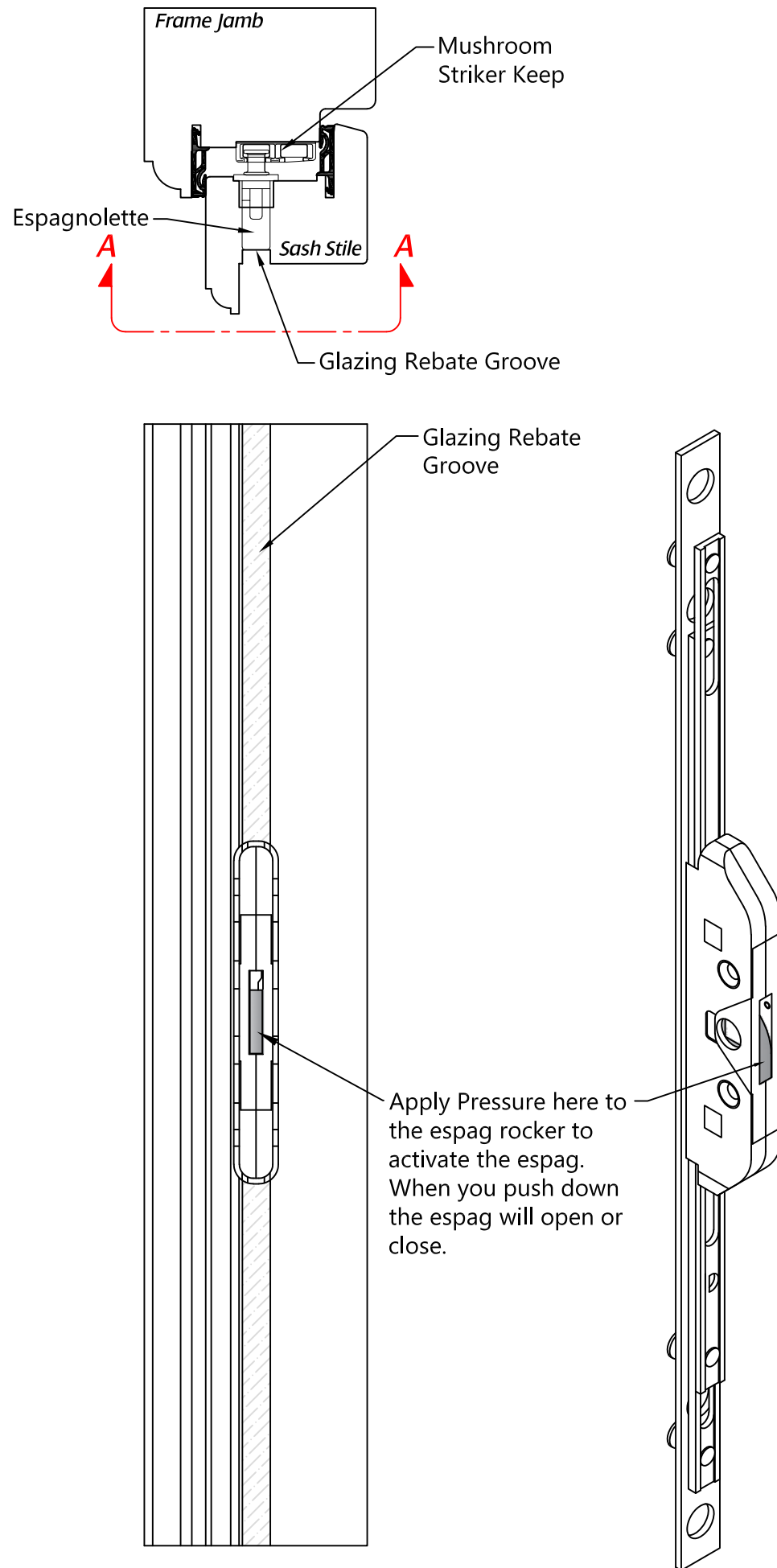



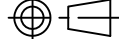
Revision	Description	Drawn	Date
A	Release	PW	29/8/18



Section A-A

Using the EBT Espag bolt to secure a dummy sash.

- 1) When machining the sash, machine the same as you would for the opening sash but do not machine the handle holes in the sash stile, the pocket for the espag should be visible in the glazing rebate groove.
- 2) Fit the Sash using friction hinges as normal, fit the EBSK mushroom keeps to the frame & espag to the sash stile.
- 3) Mount the sash and close, then apply pressure to the rear of the espagnolette which is visible from within the glazing rebate as shown to the left to fire the espag and lock the sash into place.
- 4) Glaze the sash once fitted, this will then give the effect of a dummy sash but using the same hardware as an opening sash.
- 5) To remove the sash you will need to remove the glass, then apply pressure to the espag rocker to disengage the bolts, the sash will then open.

 Global House, Bojia Industrial Estate, Trethowel, St Austell, PL25 5RJ Telephone 01726 871725 - Fax 01726 871731 Email sales@coastal-group.com - Web www.coastal-group.com	
Drawing Reference: Coastal Group	
Drawing Title: EBT Espagnolette Bolts How to Secure a Dummy Sash	
Product Range: Espagnolette Bolts	
Additional Info:	Tricoat 22mm Backset
Date Drawn:	29/08/2018
Drawn By:	Phil Walklett
Part Number:	EBT
File Name:	CG-EBT-DUMMYSASH.dwg
Revision:	A
Drawing Scale:	Not to Scale
Sheet Number:	1 of 1
THIRD ANGLE PROJECTION 	
This drawing and specification are the property of Coastal Group, they are issued in strict confidence and shall not be reproduced, copied or used without written permission.	