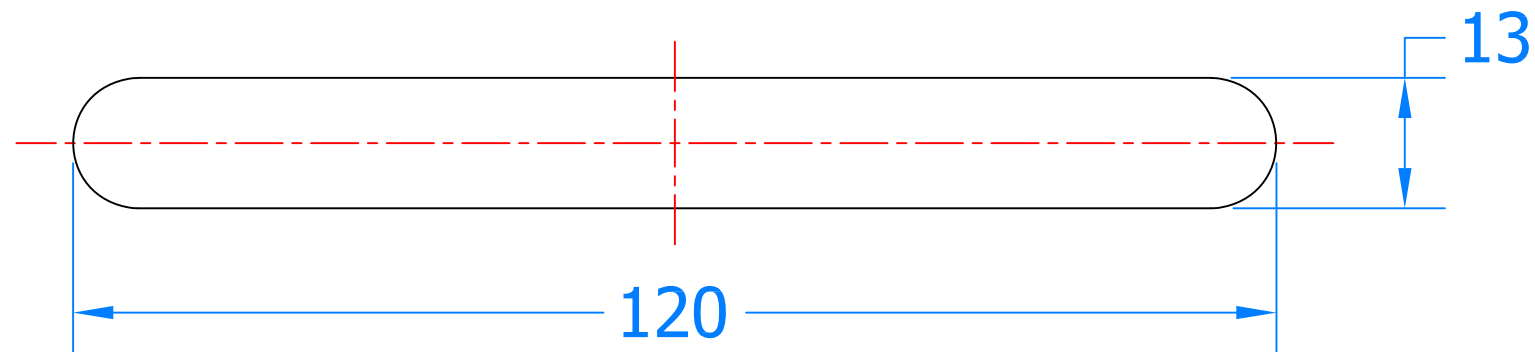


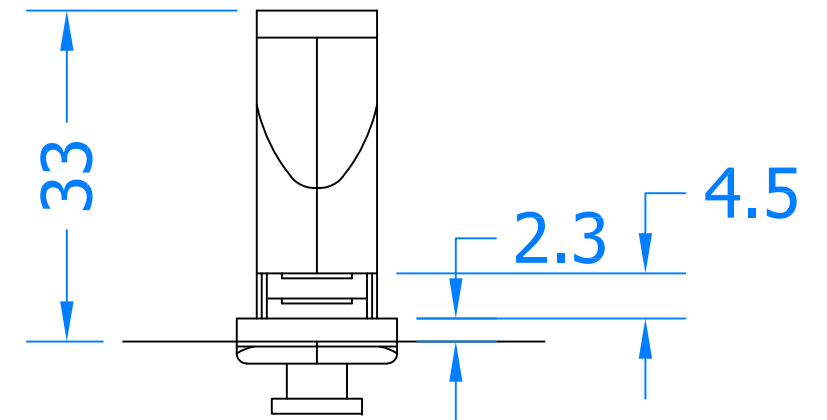
REVISIONS

| Revision | Description | Drawn | Date |
|----------|-------------|-------|----------|
| A | Release | PW | 03/06/19 |

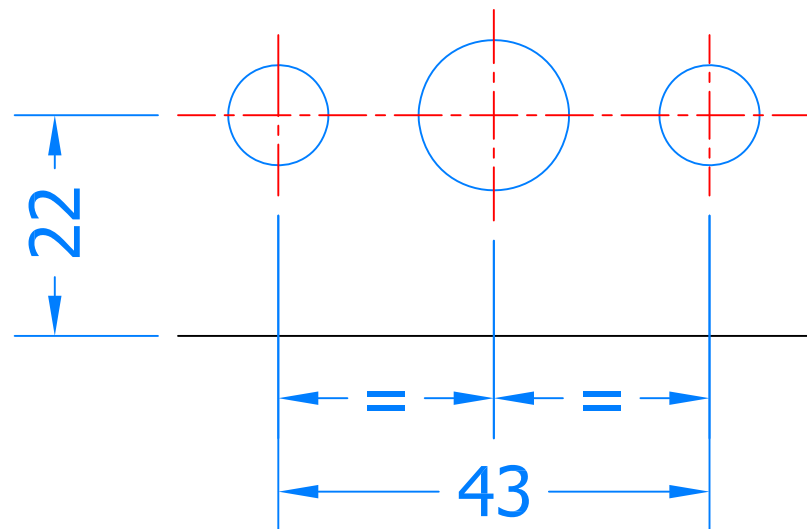
EBT Routing Preperation




Machine a 13mm wide 120mm long slot centrally to the eurogroove with a 12mm diameter cutter.



The lock case depth should be 33mm when using the 22mm backset espag.



Drill the handle holes to match the appropriate lockcase backset



Global House, Bojia Industrial Estate, Trethowel, St Austell, PL25 5RJ
Telephone | 01726 871725 - Fax | 01726 871731
Email | sales@coastal-group.com - Web | www.coastal-group.com

Coastal Group

EBT Espagnolette Bolts

Routing Preperation Drawing

Espagnolette Bolts

22mm Backset

Date Drawn: 03/06/2019

Drawn By: Phil Walklett

Part Number: EBT

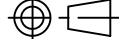
File Name: CG-EBT-ROUTING-PREP.dwg

Revision: A

Drawing Scale: 1:1@A3

Sheet Number: 1 of 1

THIRD ANGLE PROJECTION



This drawing and specification are the property of Coastal Group, they are issued in strict confidence and shall not be reproduced, copied or used without written permission.