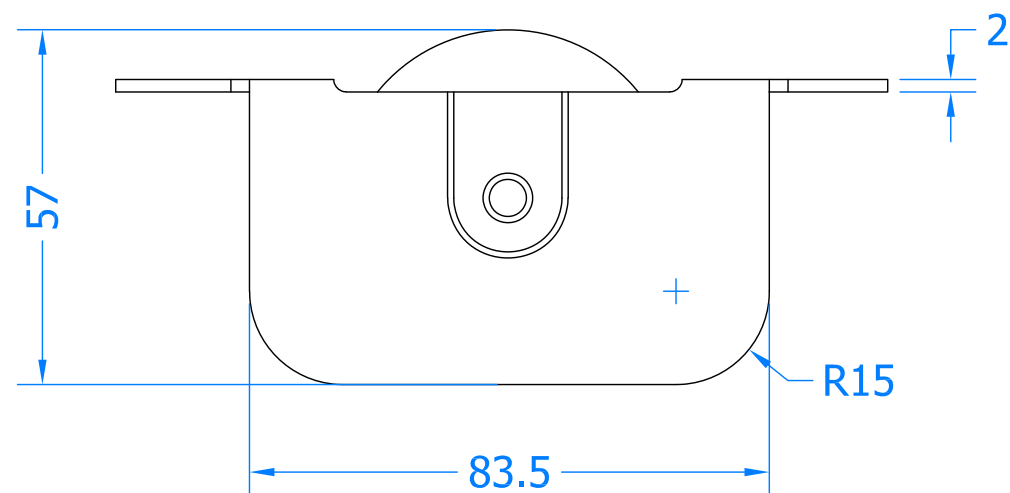
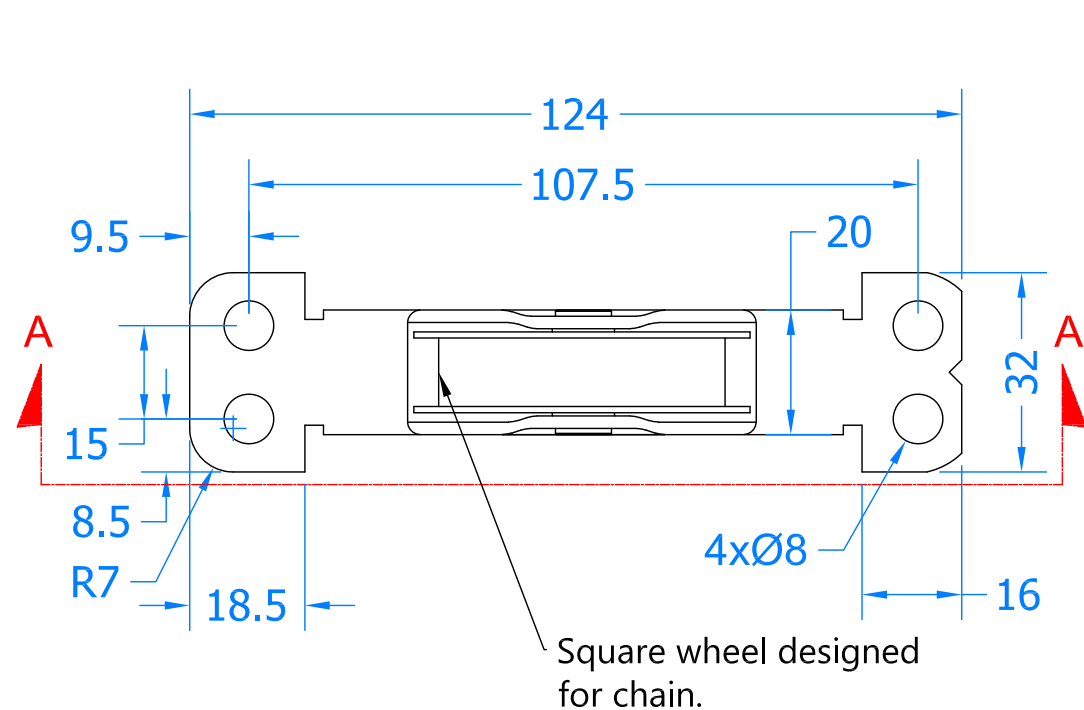
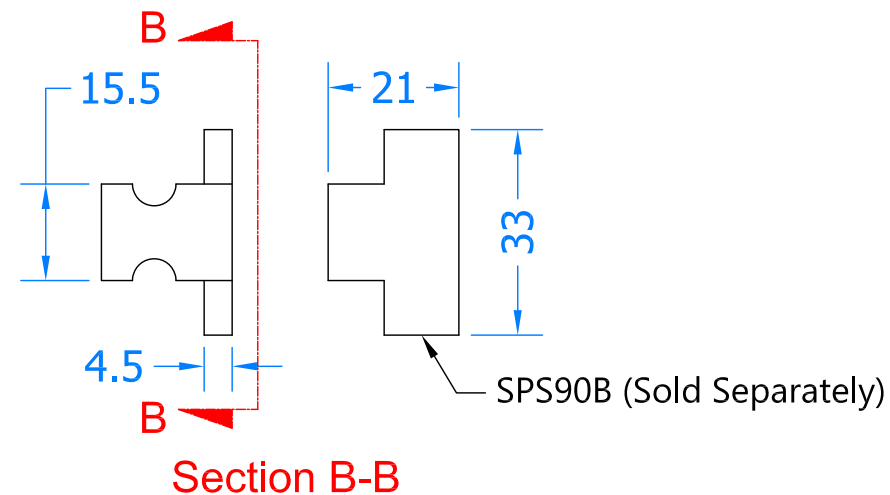


Revision History			
Revision	Description	Drawn By	Date
A	Released	PW	9/12/16
B	Bumper is now separate item SPS90B	PW	3/4/18

## Bumper (Optional & Supplied Separately)



Section A-A



Section B-B


## Bumper Assembly

Bumper SPS90B  
(Optional &  
Supplied Separately)

SPS90RW

SPS90P  
Pulley Cover Plate  
(Supplied Separately)

The bumper is designed to stop the sash from hitting the head, it acts as a stop bumper, this is an optional component and is sold separately. This fits behind the top fixing points as shown above.

	
Global House, Bojia Industrial Estate, Trethowel, St Austell, PL25 5RJ telephone   01726 871724 - fax   01726 871731 email   sales@coastal-group.com - web   www.coastal-group.com	
Drawing Reference:	
Coastal Group	
Drawing Title:	
SPS90RW Pulley with Square Wheel	
Product Range:	
Sliding Sash Pulley	
Additional Info:	
Bumper SPS90B is sold Separately	
Date Drawn:	03/04/2018
Drawn By:	Phil Walklett
Part Number:	SPS90-SW
File Name:	CG-SPS90-SW.dwg
Revision:	B
Drawing Scale:	NONE
Sheet Number:	1 of 1
THIRD ANGLE PROJECTION	
This drawing and specification are the property of Coastal Group, they are issued in strict confidence and shall not be reproduced, copied or used without written permission.	