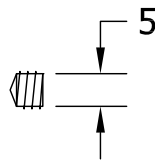
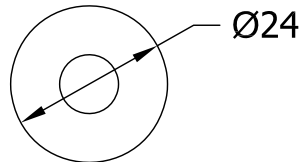


Revision History

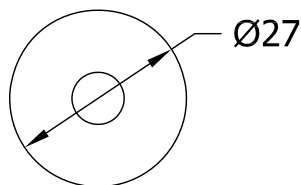
Revision	Description	DRFT	CHK	Date
A	Release	PW	BD	25/9/17



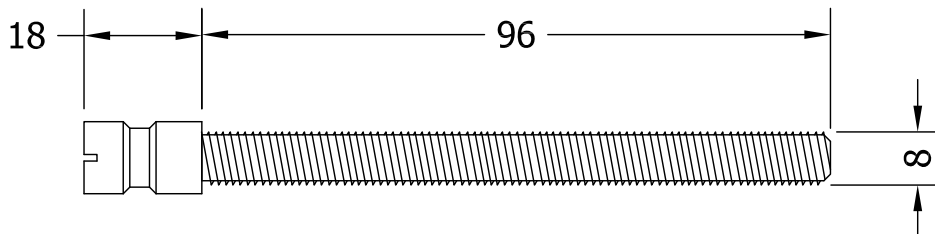
2 x 5mm Grub Screws



4 x Glass Protector Pads
Not Required on Timber Doors



4 x Metal Washers



To suit up to 85mm thick doors.
2 x M8 Fixing Bolts



1 x 3mm Allen Key



Global House
Bojea Industrial Estate
Trethowel, St Austell
Cornwall, PL25 5RJ

t | 01726 871724
f | 01726 871731
sales@blu-performance.com
www.blu-performance.com

Drawing Reference:

blu™ Performance

Drawing Title:

**FX-10010 Back to Back Fixing Kit
For HAB2 / HAB4 / HAB8 Pull Handles**

Product Range:

Pull Handles

Additional Info: Suits up to 85mm door thickness
316 Satin Stainless Steel

Date Drawn: 25/09/2017

Drawn By: Phil Walklett

Part Number: **FX-10010-BLU**

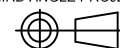
File Name: **Blu-Fixing-Kits.dwg**

Revision: **A**

Drawing Scale: **None**

Sheet Number: **1 of 1**

THIRD ANGLE PROJECTION



This drawing and specification are the property of blu Performance, they are issued in strict confidence and shall not be reproduced, copied or used without written permission.