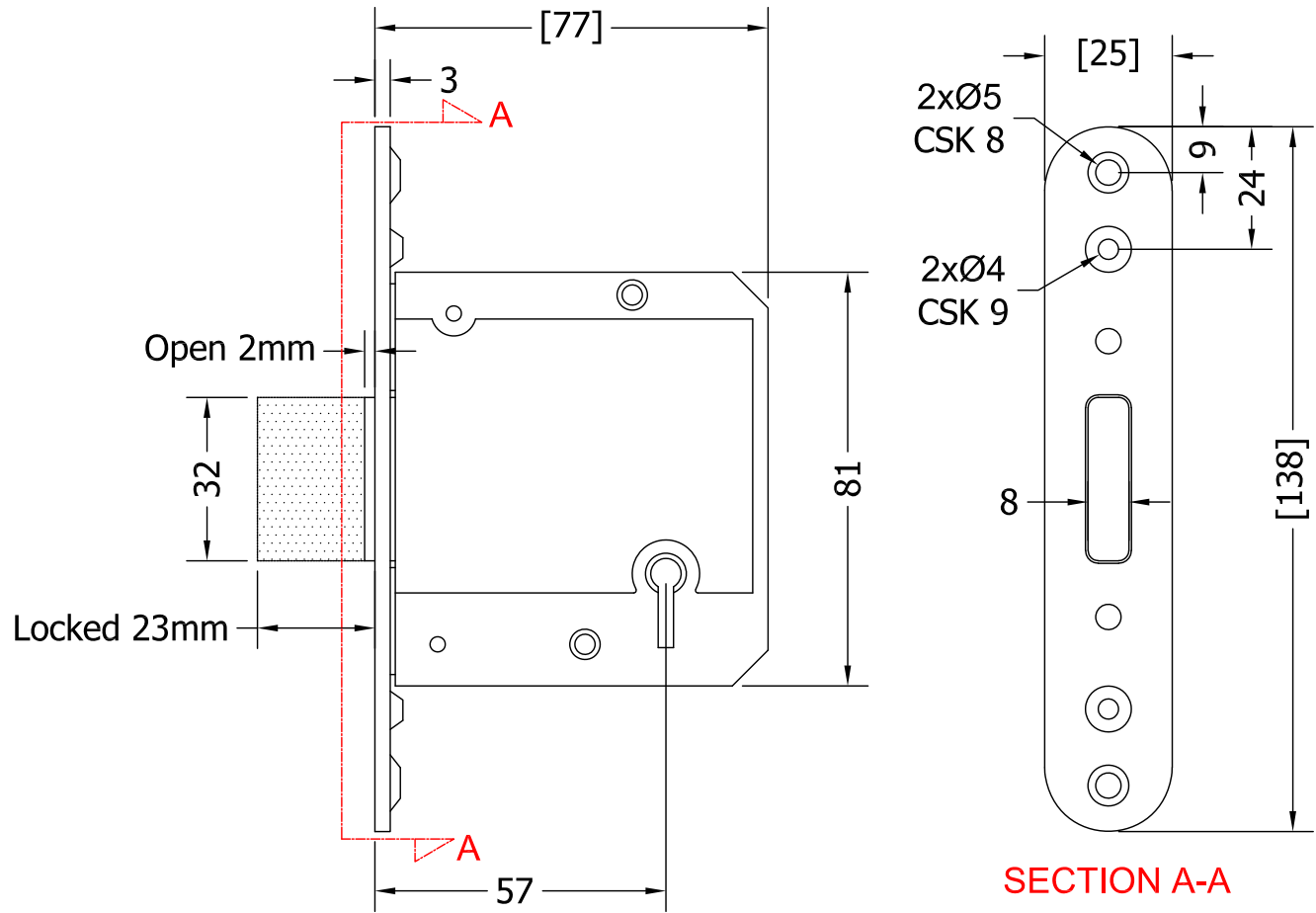
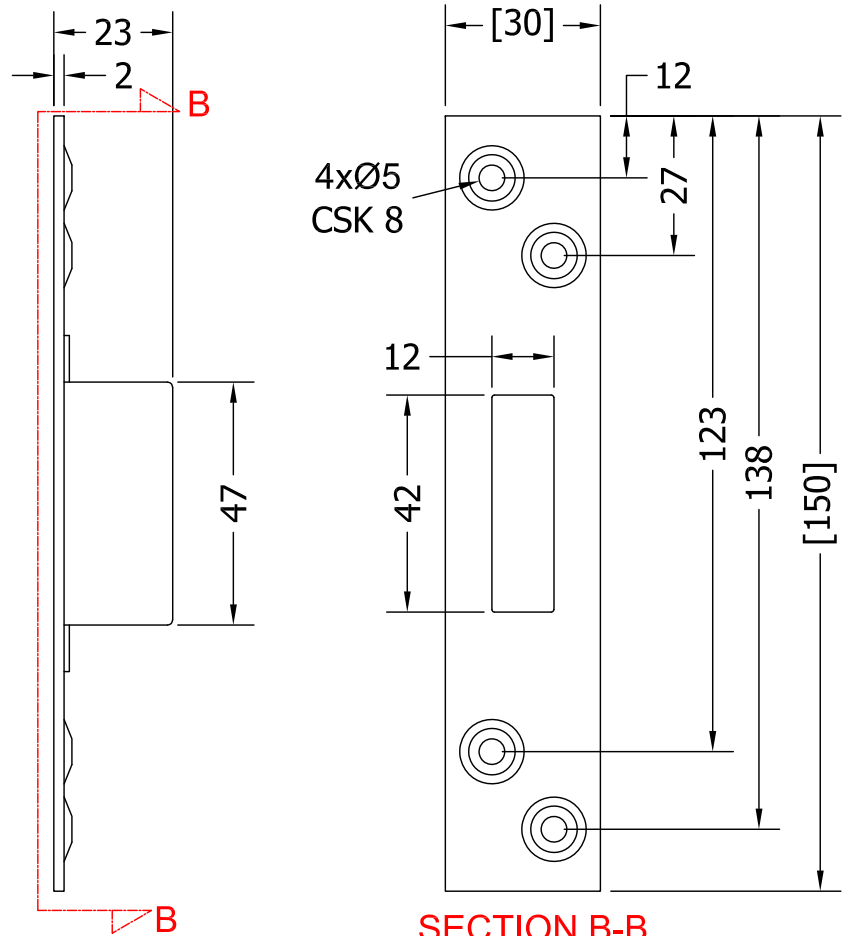


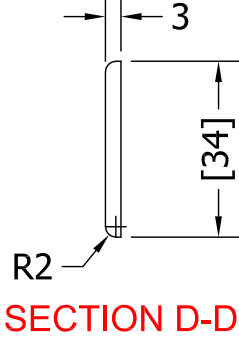
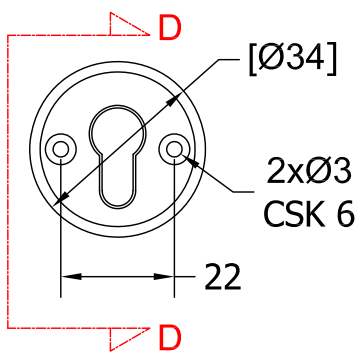
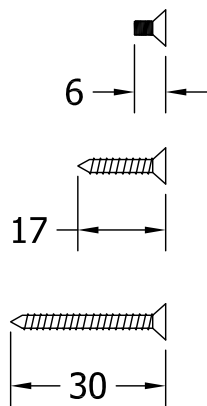
Revision	Description	Drawn By	Date
A	Released	PW BD	12/10/17



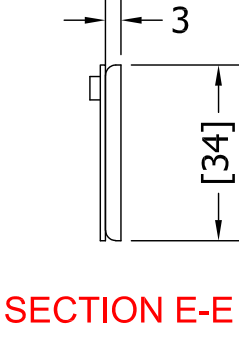
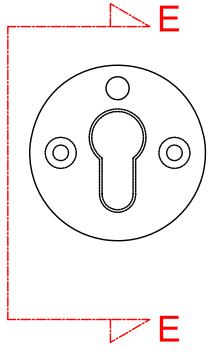
SECTION A-A



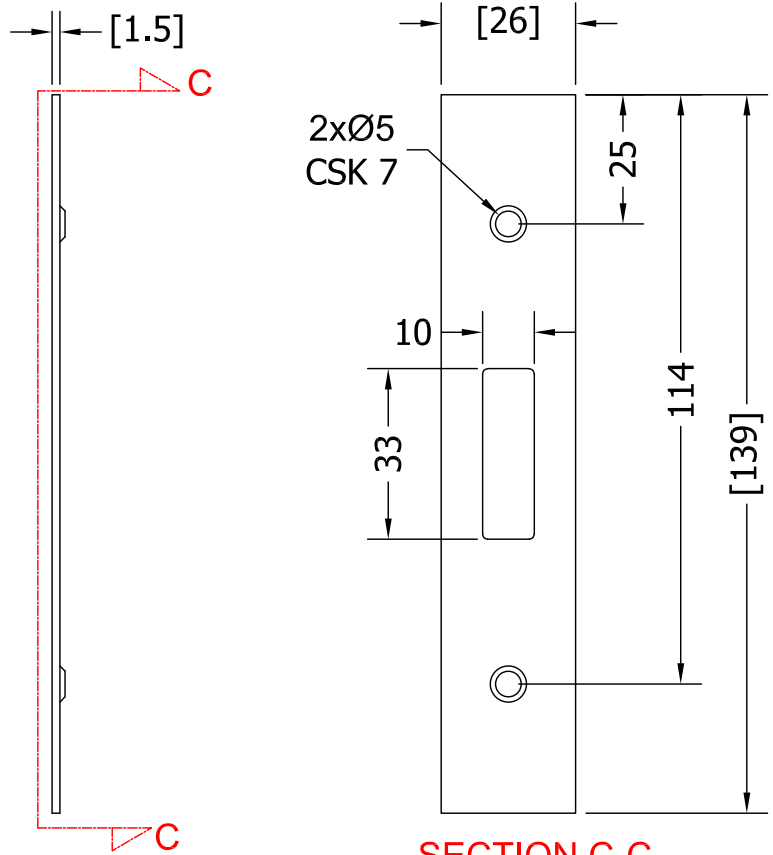
SECTION B-B



SECTION D-D



SECTION E-E



SECTION C-C

COASTAL GROUP
Global House, Bojes Industrial Estate, Trethowel, St Austell, PL25 5RJ
Telephone | 01726 871725 - Fax | 01726 871731
Email | sales@coastal-group.com - Web | www.coastal-group.com

Drawing Reference:
Coastal Group
Drawing Title:
**5 Lever Mortice Deadlock to BS3621
57mm Backset / 77mm Depth**
Product Range:
Mortice Deadlocks
Additional Info: **Satin Stainless Steel / PVD
FD30/60 - SBD**
Date Drawn: 16/10/2017
Drawn By: **Phil Walklett**
Part Number: **LDB5530**
File Name: **CG-LDB5530.dwg**
Revision: **A**
Drawing Scale: **NONE**
Sheet Number: **1 of 1**

THIRD ANGLE PROJECTION
This drawing and specification are the property of Coastal Group, they are issued in strict confidence and shall not be reproduced, copied or used without written permission.