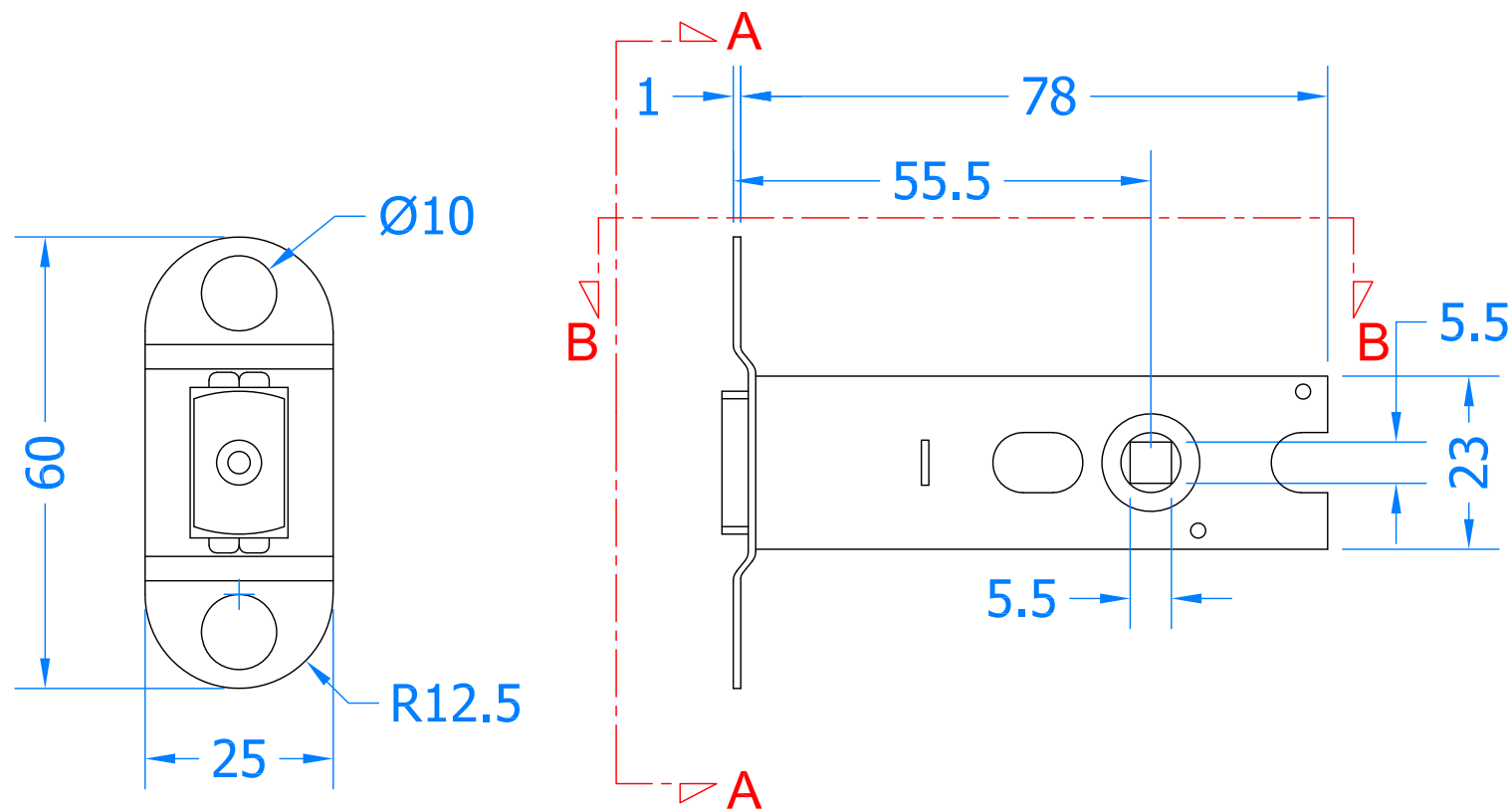
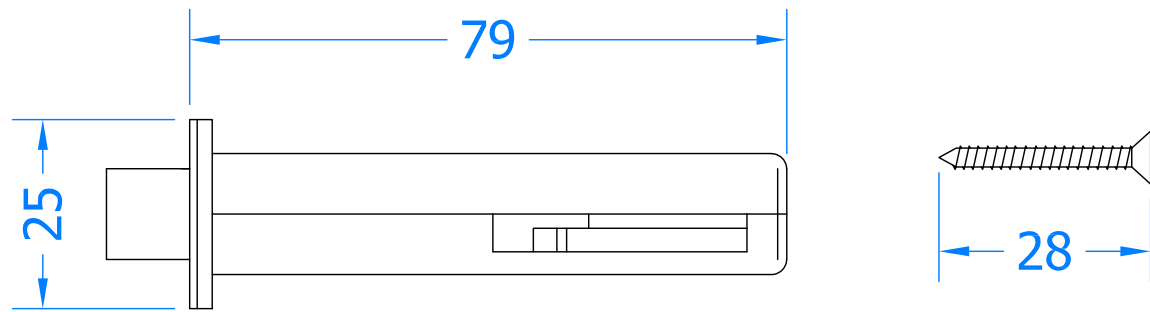


### Revision History

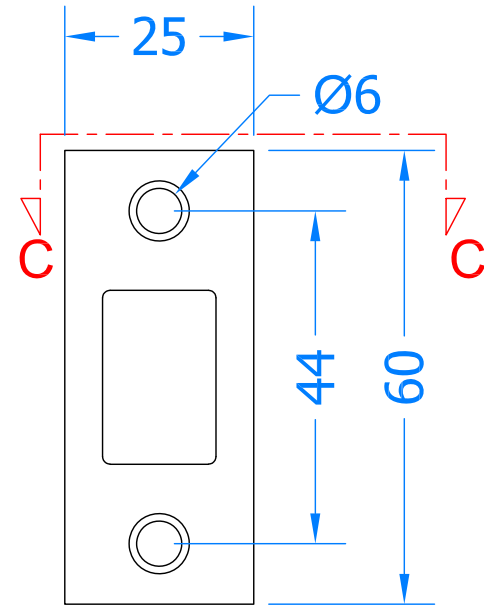
Revision	Description	Drawn By	Date
A	Released	PW BD	16/10/17



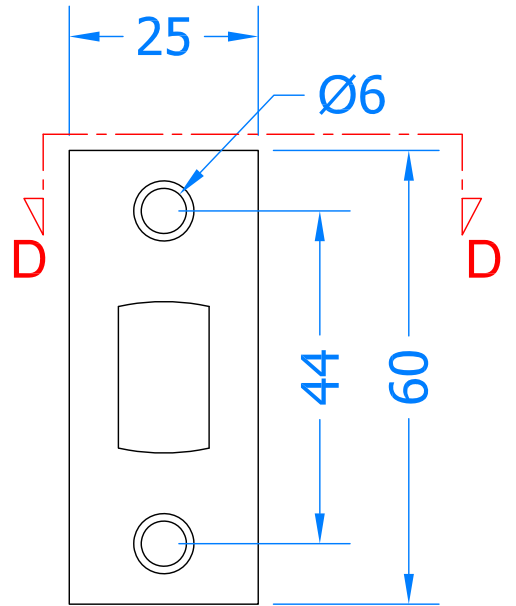
Section A-A



Section B-B



Section C-C



Section D-D

**COASTAL GROUP**  
Innovating & upgrading the style, performance & longevity of external doors & windows globally

Global House, Bojea Industrial Estate, Trethowel, St Austell, PL25 5RJ  
Telephone | 01726 871725 • Fax | 01726 871731  
Email | sales@coastal-group.com • Web | www.coastal-group.com

Drawing Reference:  
**Coastal Group**

Drawing Title:  
**Tubular Deadbolt to BS12209  
57mm Backset / 78mm Depth**

Product Range:  
**Deadbolt**

Additional Info: **Satin Stainless Steel / PVD  
FD30/60**

Date Drawn: **18/10/2017**

Drawn By: **Phil Walklett**

Part Number: **TLD5030-SSSPVD**

File Name: **CG-TLD5030.dwg**

Revision: **A**

Drawing Scale: **NONE**

Sheet Number: **1 of 1**

THIRD ANGLE PROJECTION

This drawing and specification are the property of Coastal Group, they are issued in strict confidence and shall not be reproduced, copied or used without written permission.