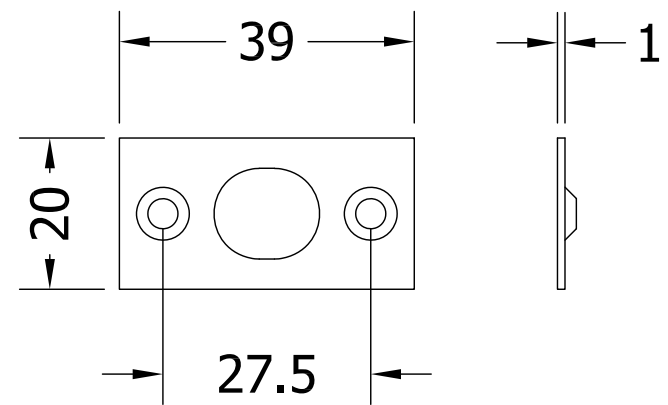
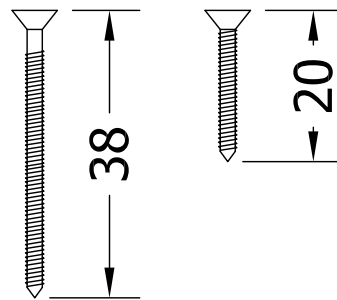
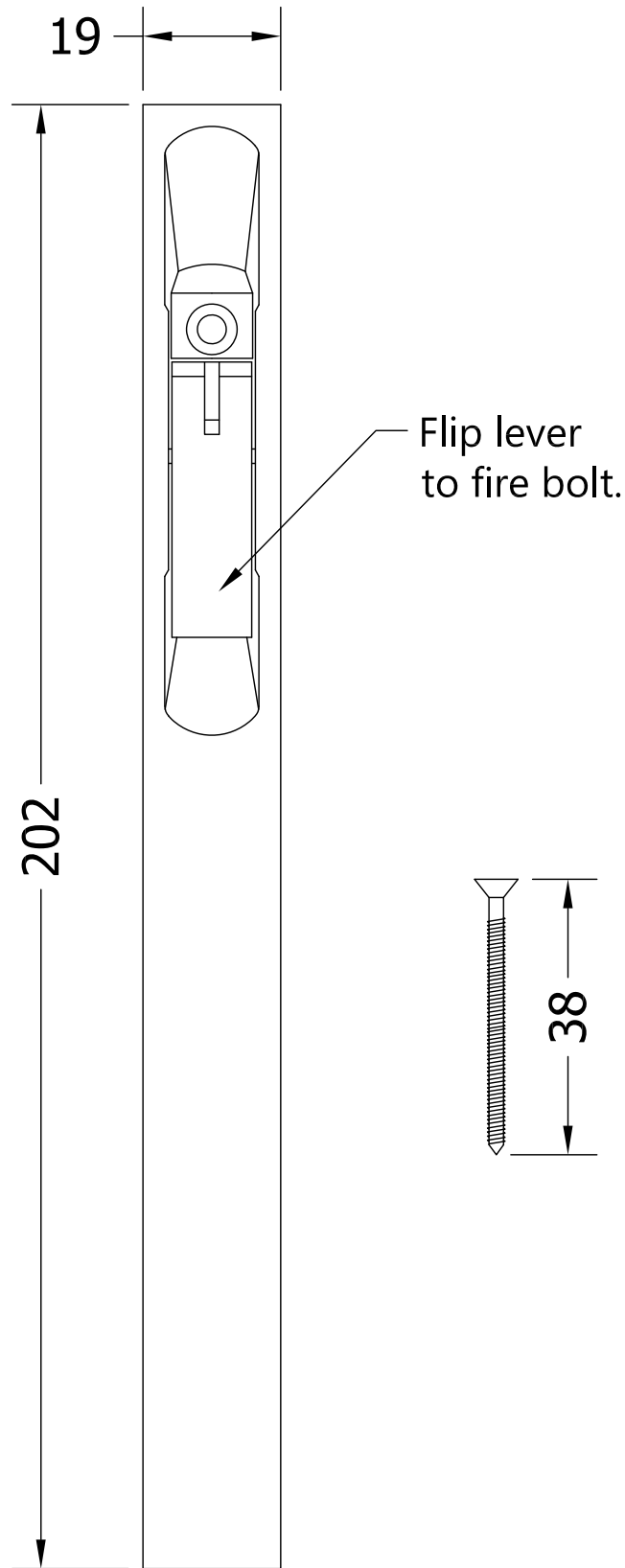
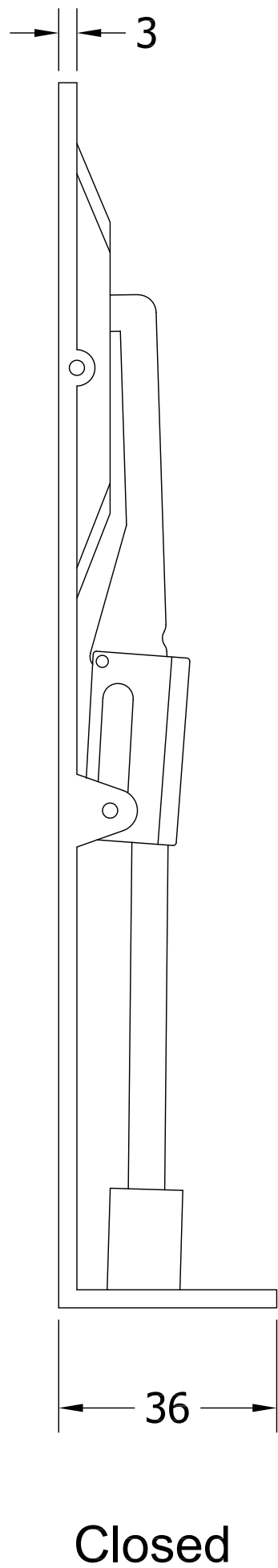
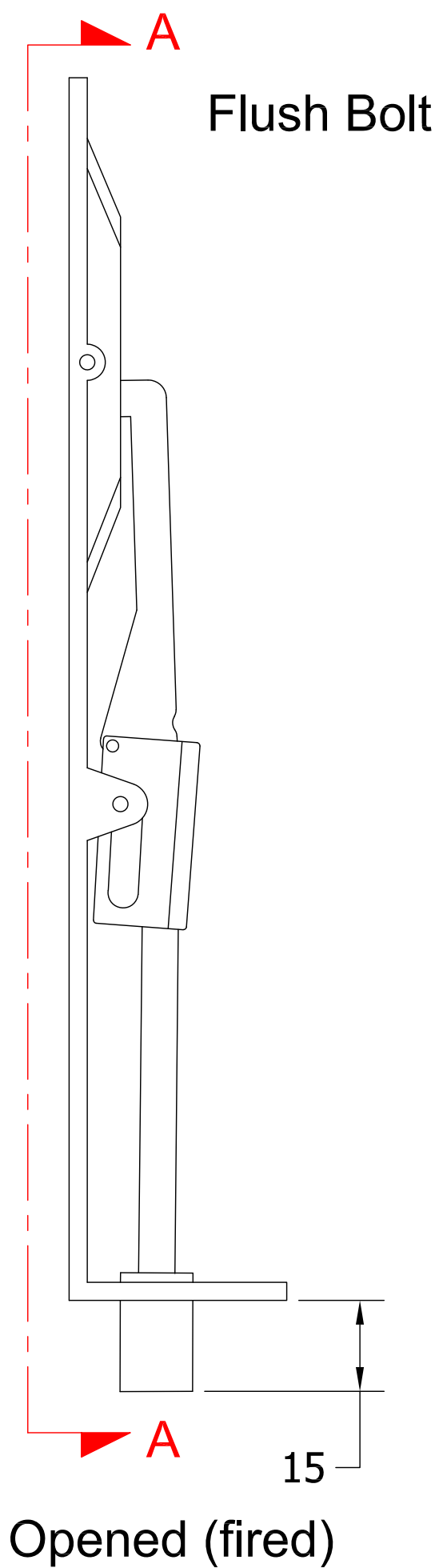




REVISIONS			
Revision	Description	Drawn By	Date
A	Release	PW	08/11/17



Flat Plate Keep



Global House, Bojea Industrial Estate, Trethowel, St Austell, PL25 5RJ
Telephone | 01726 871725 - Fax | 01726 871731
Email | sales@coastal-group.com - Web | www.coastal-group.com

Coastal Group

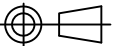
Drawing Title:
**FBA8
Architectural Flush Bolts**

Product Range:
Flush Bolts

Additional Info:

Date Drawn:	08/11/2017
Drawn By:	Phil Walklett
Part Number:	FBA8
File Name:	CG-FBA8.dwg
Revision:	A
Drawing Scale:	1:1@A3
Sheet Number:	1 of 1

THIRD ANGLE PROJECTION



This drawing and specification are the property of Coastal Group, they are issued in strict confidence and shall not be reproduced, copied or used without written permission.