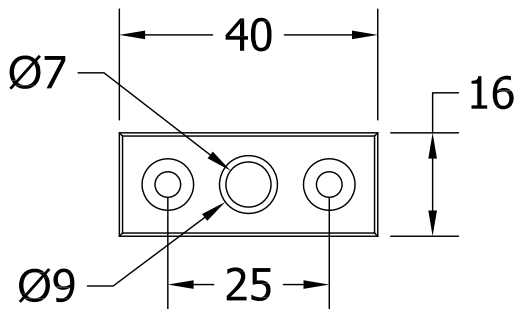
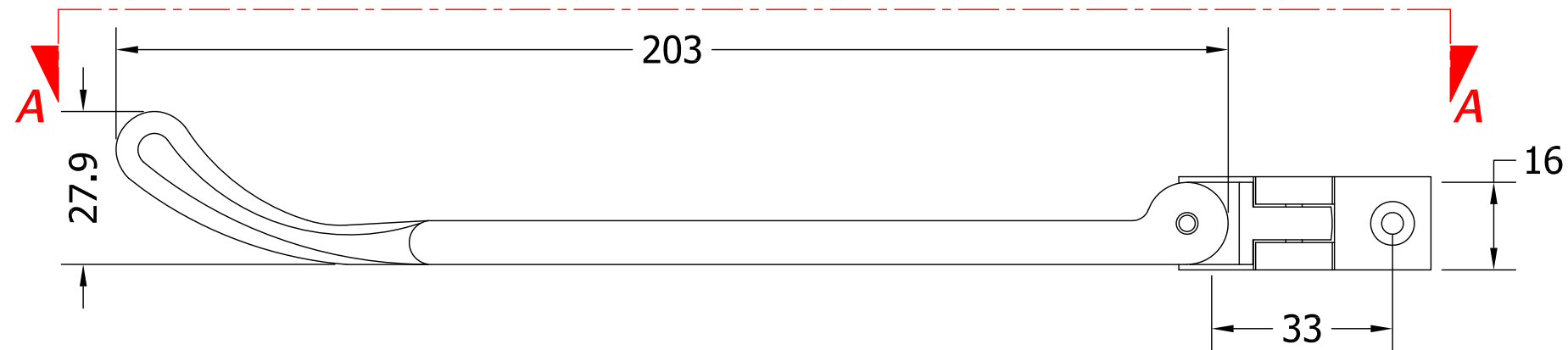
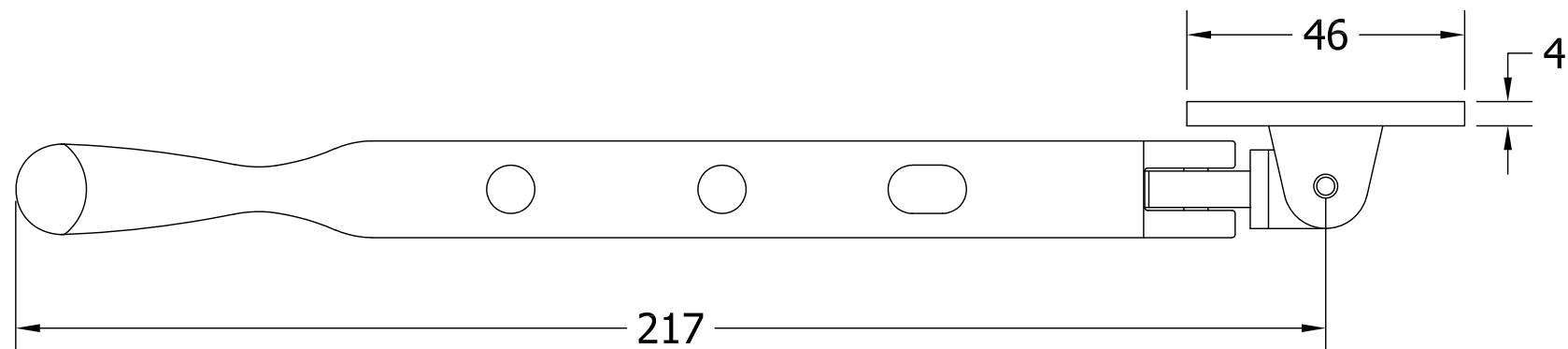


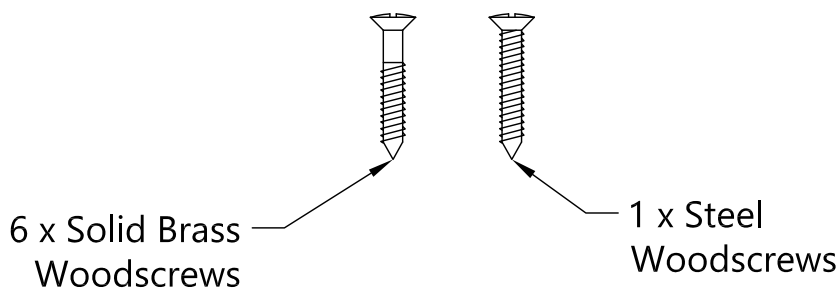
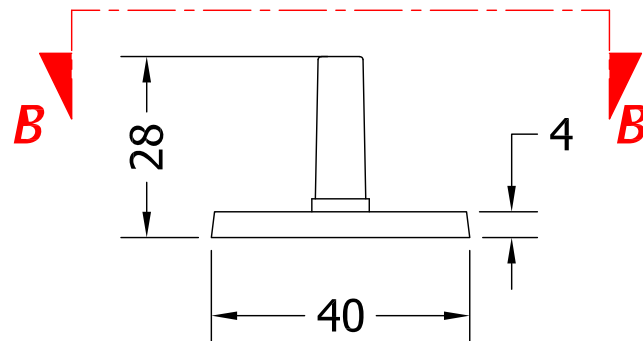
REVISIONS			
Revision	Description	Drawn	Date
A	Release	PW	26/1/18



Section B-B



Section A-A



This product is supplied with solid brass woodscrews and one steel screw, the steel screw is intended to be used to cut the thread prior to fixing the door furniture with the brass woodscrews.

We recommend the drilling of a small pilot hole into the solid wood doors to avoid sheering the brass screw heads. The use of power screwdrivers is not recommended as these can damage the finish or sheer off the brass screw head by slippage or excessive tightening of the screw.

	
Global House, Bojea Industrial Estate, Trethowel, St Austell, PL25 5RJ Telephone 01726 871725 - Fax 01726 871731 Email sales@coastal-group.com - Web www.coastal-group.com	
Drawing Reference:	
Coastal Group	
Drawing Title:	
CC48 - Traditional Bulb End Casement Window Stay 8"	
Product Range:	
Window Furniture	
Additional Info:	
203mm - 8"	
Date Drawn:	
26/01/2018	
Drawn By:	
Phil Walklett	
Part Number:	
CC48	
File Name:	
CG-CC48.dwg	
Revision:	
A	
Drawing Scale:	
None	
Sheet Number:	
1 of 1	
THIRD ANGLE PROJECTION	
	
This drawing and specification are the property of Coastal Group, they are issued in strict confidence and shall not be reproduced, copied or used without written permission.	