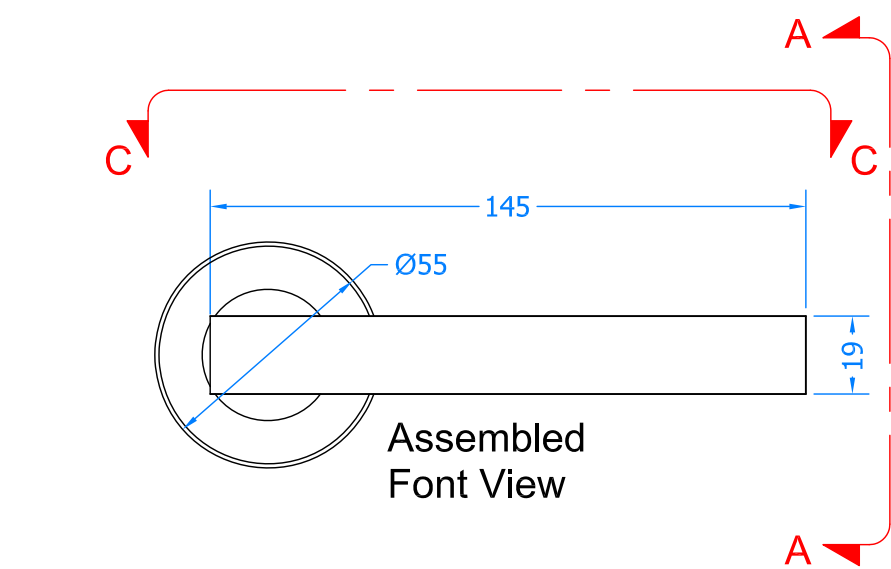
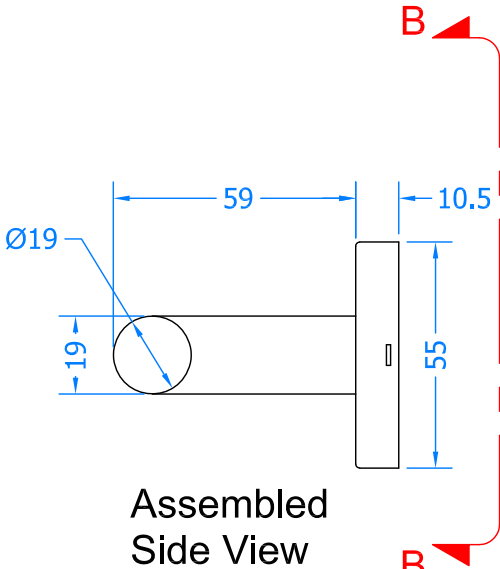


While every attempt has been made to ensure the accuracy and completeness of the information in this document some typographical or technical errors may exist. Blu Performance cannot accept responsibility for customers' losses resulting from the use of this document. Please also note that this drawing / design is subject to change without prior notice in accordance with our policy of continual product development. This drawing / design contains proprietary information that is protected by copyright and is property of Blu Performance. Blu Performance is at the leading edge in joinery hardware, customer care and quality are at the core of everything we do, you can be confident that a call to Blu will be the only call you need for all your joinery hardware needs.

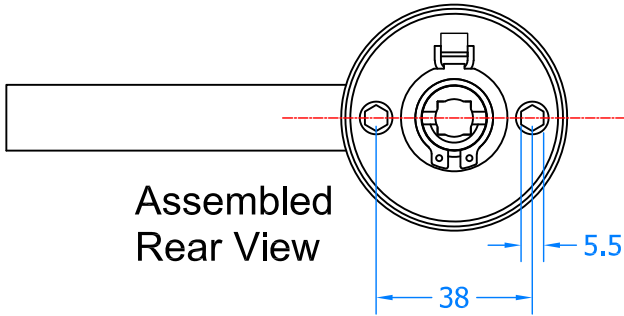
Revision History			
Revision	Description	Drawn By	Date
A	Released.	PW	17/05/19



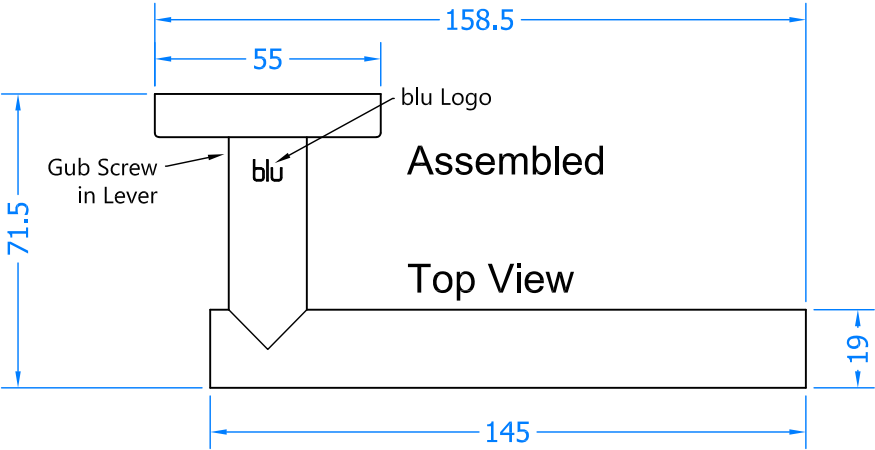
Assembled
Font View



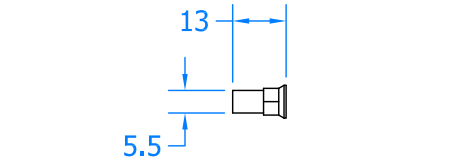
Assembled
Side View



Assembled
Rear View



Assembled
Top View



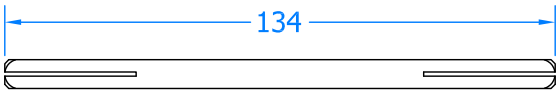
Bolt Receiver Sleeve



Bolts

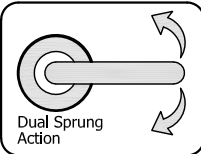
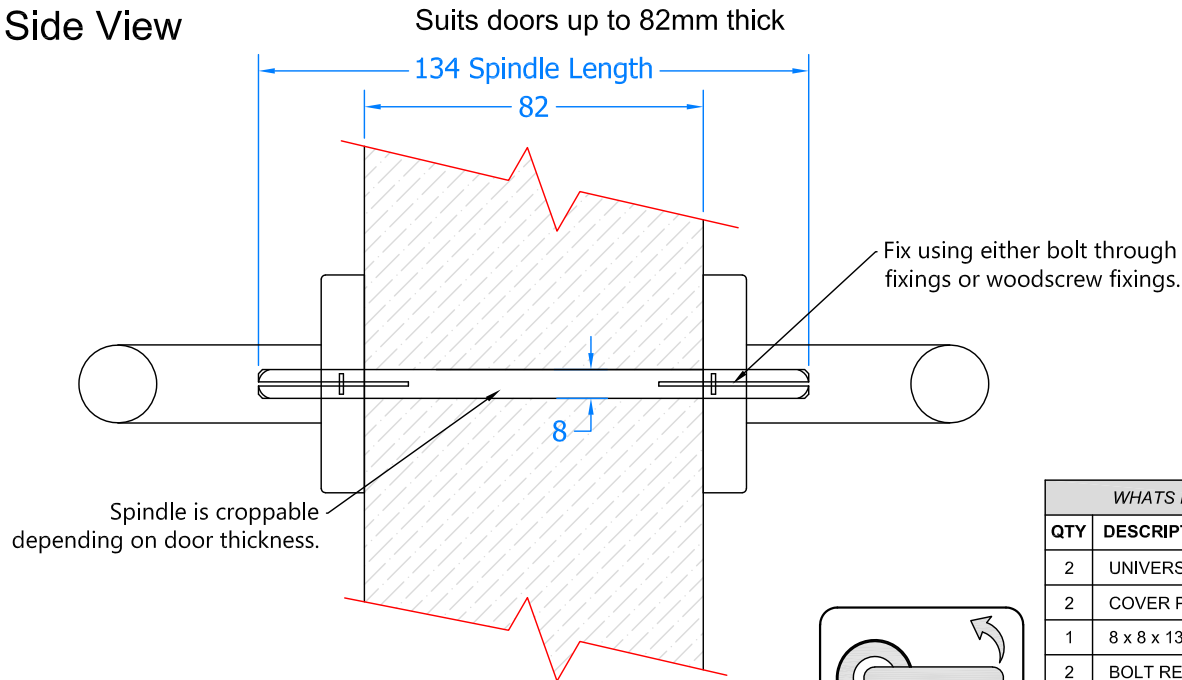


3mm Allen Key



8 x 8 x 134mm Spindle

Assembled
Side View



WHATS INCLUDED IN THE BOX	
QTY	DESCRIPTION
2	UNIVERSAL BACKPLATE & LEVERS
2	COVER PLATES
1	8 x 8 x 134mm SPINDLE
2	BOLT RECEIVER SLEEVE
2	75mm BOLTS
1	3mm GRUB SCREW ALLEN KEY



Global House
Bojea Industrial Estate
Trethowel, St Austell
Cornwall, PL25 5RJ

t | 01726 871025 f | 01726 871731
e | sales@blu-performance.com
w | www.blu-performance.com

Customer Reference:

blu Performance

Drawing Title:
**T-Bar Lever on Rose Handle Set
Dual Sprung - 316 Satin Stainless Steel**

Product Range / Project Reference
KM065B-316-SSS

Other Information: Will work on doors up to 82mm thick.

Date Drawn: 17/05/2019

Drawn By: Phil Walklett

Drawing Number:
BP-KM065B-316.dwg

Revision:
A

THIRD ANGLE PROJECTION

Scale: NONE

Sheet: 1 of 1

This drawing and specification are the property of Coastal Group, they are issued in strict confidence and shall not be reproduced, copied or used without written permission.