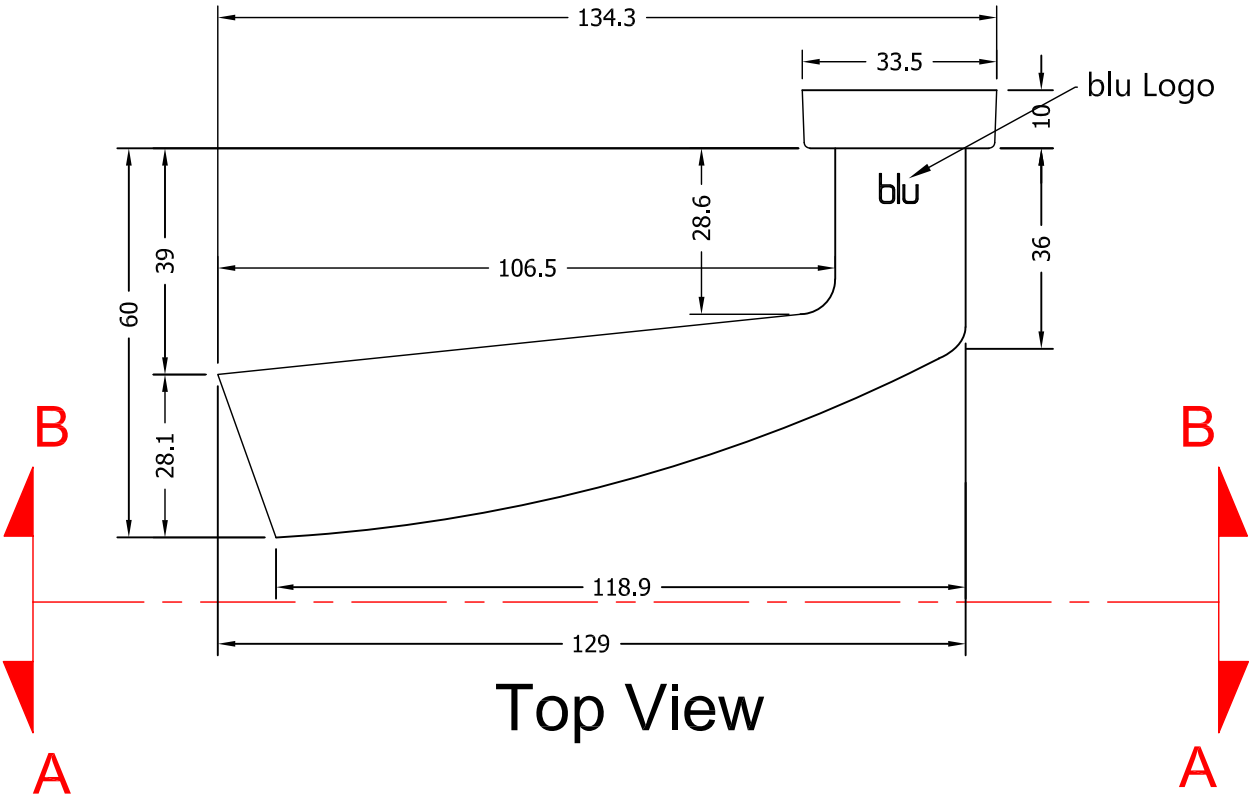
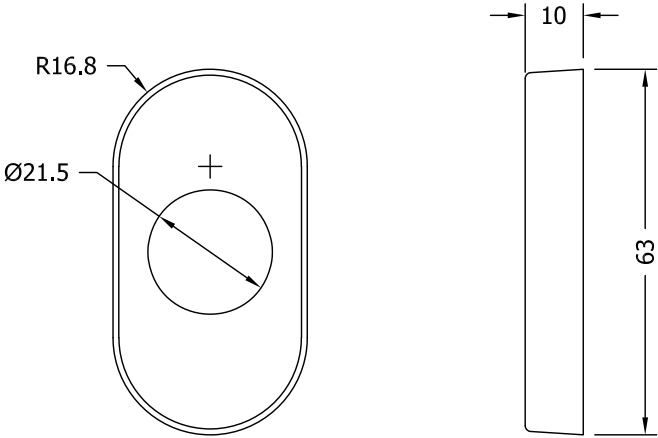


While every attempt has been made to ensure the accuracy and completeness of the information in this document some typographical or technical errors may exist. Blu Performance cannot accept responsibility for customers' losses resulting from the use of this document. Please also note that this drawing / design is subject to change without prior notice in accordance with our policy of continual product development. This drawing / design contains proprietary information that is protected by copyright and is property of Blu Performance. Blu Performance is at the leading edge in joinery hardware, customer care and quality are at the core of everything we do, you can be confident that a call to Blu will be the only call you need for all your joinery hardware needs.

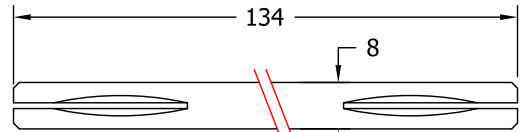
Revision History			
Revision	Description	Drawn By	Date
A	Released.	PW	25/11/16
B	Remove all bolt fixings.	PW	13/2/17
C	Altered lever to the new larger type.	PW	22/11/17



Top View



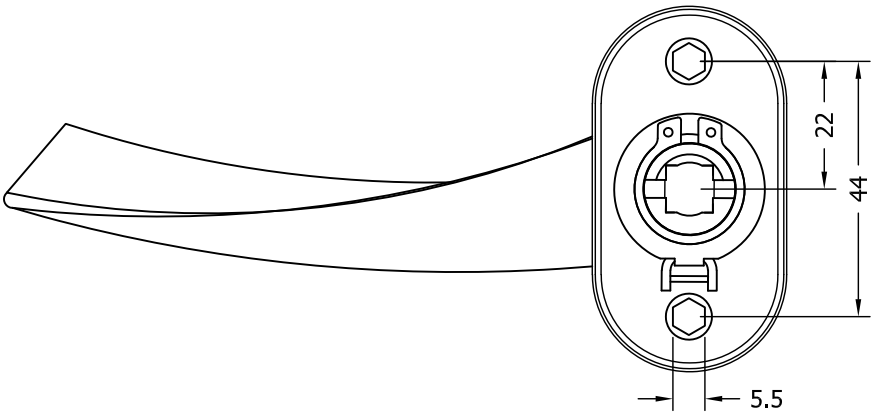
Cover Plate



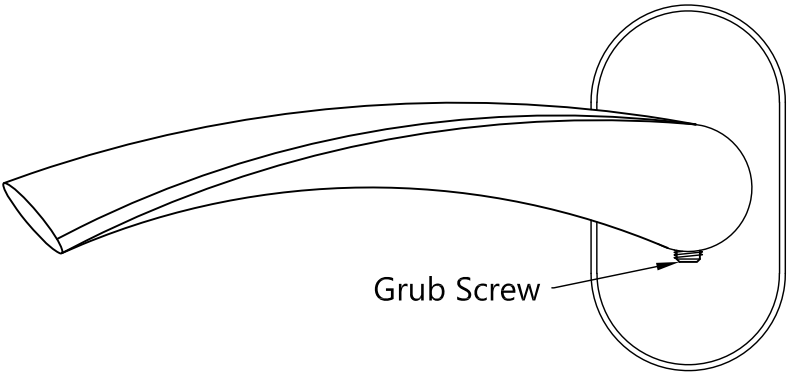
8x8x134 Spindle



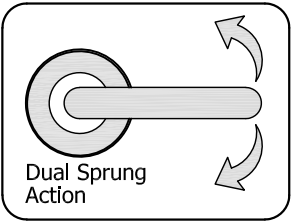
3mm Allen Key



Rear View
Section A-A



Assembled Front View
Section B-B



WHATS INCLUDED IN THE BOX	
QTY	DESCRIPTION
2	DUAL SPRUNG WING HANDLES
2	OVAL COVER PLATES
1	8 x 8 x 134mm SPINDLE
1	3mm ALLEN KEY



Global House
Bojea Industrial Estate
Trethowel, St Austell
Cornwall, PL25 5RJ
t | 01726 871025 f | 01726 871731
e | sales@blu-performance.com
w | www.blu-performance.com

Customer Reference:

blu Performance

Drawing Title:
**Wing Lever On Oval Rose Handle Set
Larger Lever Version - 316 Stainless Steel**

Product Range / Project Reference
WH990-316-SSS

Other Information: **NOTE: No fixings supplied with this handle.**

Date Drawn: **22/11/2017**

Drawn By: **Phil Walklett**

Drawing Number:
BP-WH990-316-SSS.dwg

Revision:
C

THIRD ANGLE PROJECTION



This drawing and specification are the property of Coastal Group, they are issued in strict confidence and shall not be reproduced, copied or used without written permission.

Scale: **1:1@A3**

Sheet: **1 of 1**