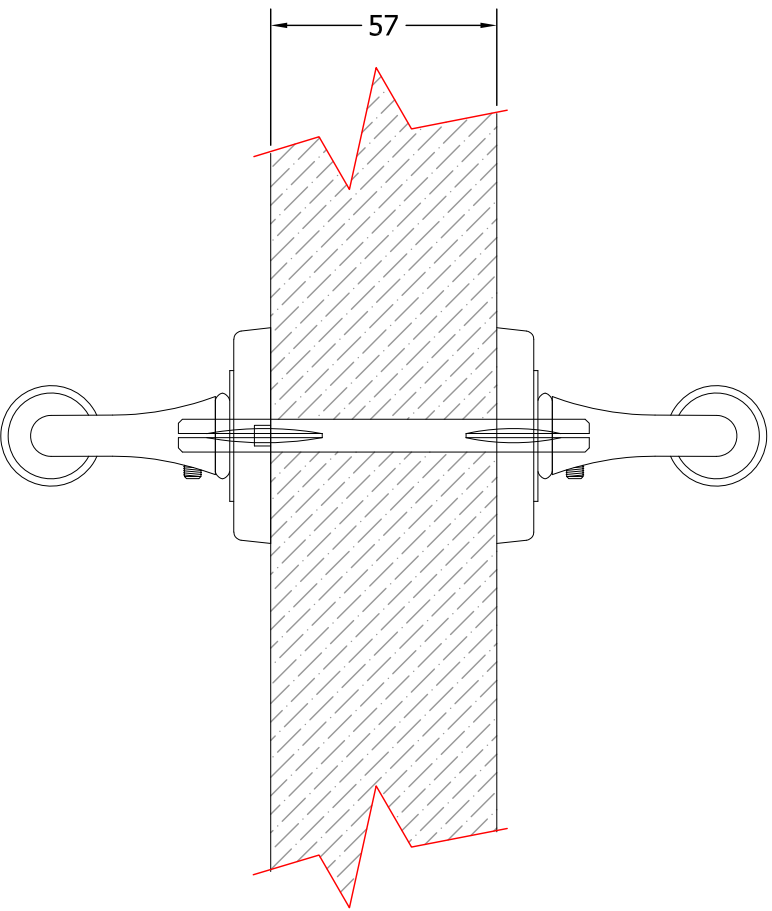
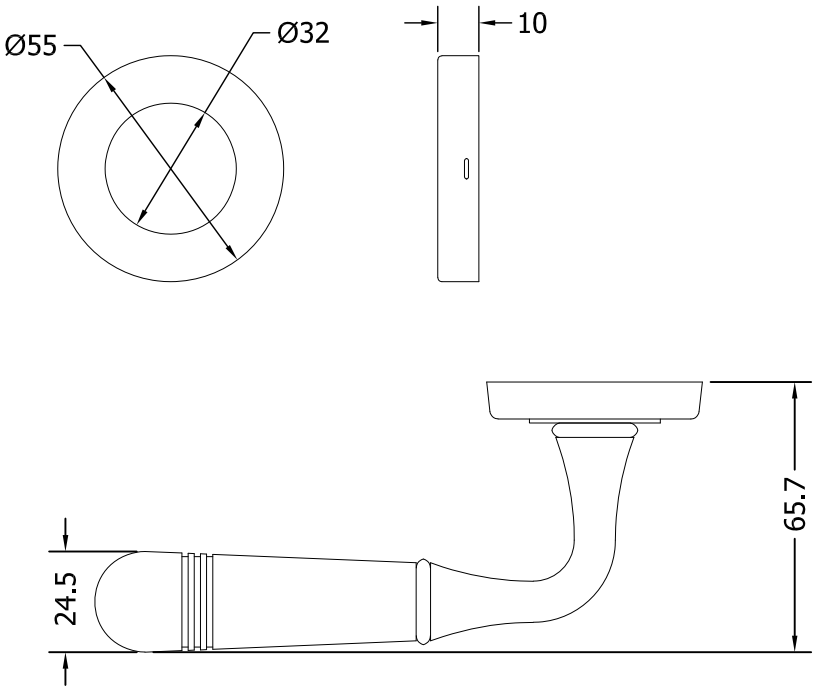
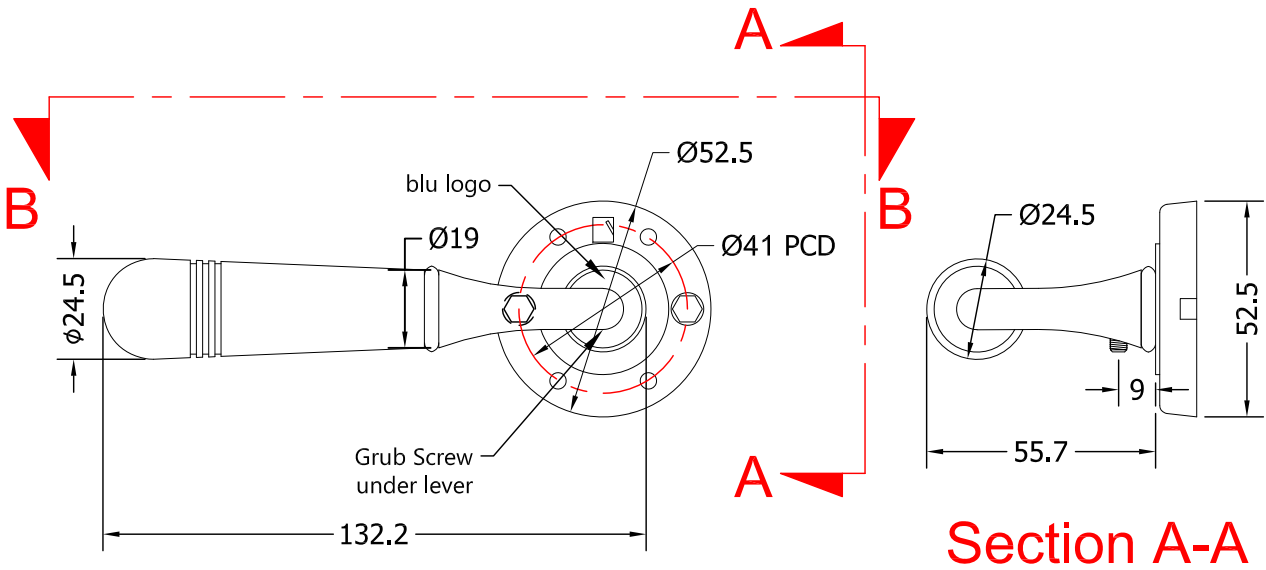


While every attempt has been made to ensure the accuracy and completeness of the information in this document some typographical or technical errors may exist. Blu Performance cannot accept responsibility for customers' losses resulting from the use of this document. Please also note that this drawing / design is subject to change without prior notice in accordance with our policy of continual product development. This drawing / design contains proprietary information that is protected by copyright and is property of Blu Performance. Blu Performance is at the leading edge in joinery hardware, customer care and quality are at the core of everything we do, you can be confident that a call to Blu will be the only call you need for all your joinery hardware needs.



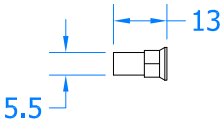
Assembled View



Top View
Section B-B

Revision History

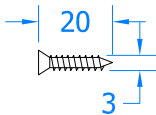
Revision	Description	Drawn By	Date	Approved By
A	Released	Phil Walklett	18/10/2019	PW / BD



Bolt Receiver Sleeve



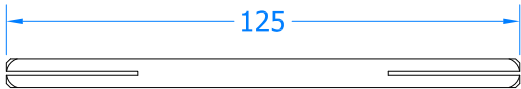
Bolts



Wood Screws



3mm Allen Key



8 x 8 x 125mm Spindle

WHAT'S INCLUDED IN THE BOX	
QTY	DESCRIPTION
2	DOOR HANDLES (SINGLE SPRUNG) WITH COVER PLATES
1	8 X 8 X 125 MM SPINDLE
2	75 MM FIXING BOLTS
2	13MM BOLT RECEIVER SLEEVES
8	20MM WOODSCREWS
1	2MM ALLEN KEY



Global House
Bojea Industrial Estate
Trethowel, St Austell
Cornwall, PL25 5RJ

t | 01726 871025 f | 01726 871731
e | sales@blu-performance.com
w | www.blu-performance.com

Customer Reference:

blu Performance

Drawing Title:
**Opera Lever on Rose Set
316 Satin Stainless Steel**

Product Range / Project Reference
TBH100-SSS (Dual Sprung)

Other Information: Will work on doors up to 57mm thick

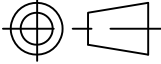
Date Drawn: 18/10/2019

Drawn By: Phil Walklett

Drawing Number:
BP-TBH100-SSS.dwg

Revision:
A

THIRD ANGLE PROJECTION



This drawing and specification are the property of Coastal Group, they are issued in strict confidence and shall not be reproduced, copied or used without written permission.

Scale: NONE

Sheet: 1 of 1