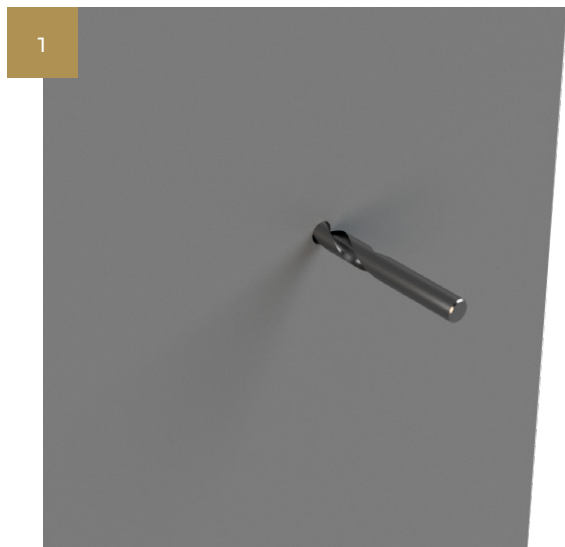


FITTING GUIDE

BACK TO BACK UNIVERSAL FIX - FIXING KIT

LIT-FG-FX-UF-FK-BB



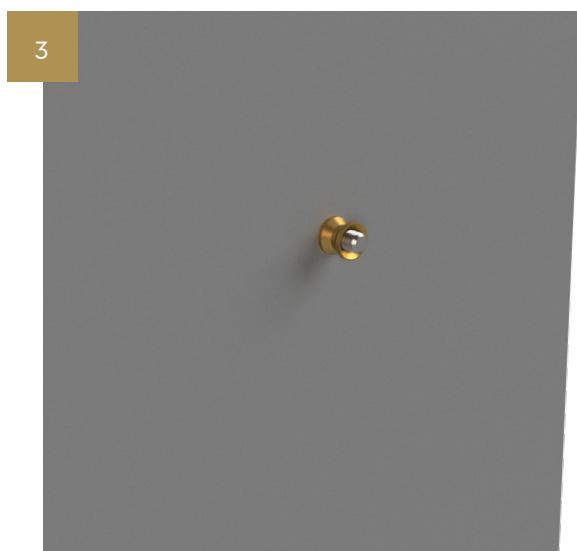
Mark out on the door where the product will be installed, if the product requires 2 kits make sure the hole centres are correct.

With a 10mm drill bore a hole right the way through the door.



Take the long bolt and the non-threaded brass ferrule, slide the ferrule onto the bolt (counter sunk side facing the bolt head).

From the inside of the door push the bolt through the door until the ferrule sits flush to the face of the door.



Take the threaded brass ferrule and screw onto the bolt until this is tight to the face of the door.

NOTE: The bolt should sit just proud of the brass ferrule when installed, you might need to cut the bolt down to achieve this, mark the bolt then remove and cut if required.

FITTING GUIDE

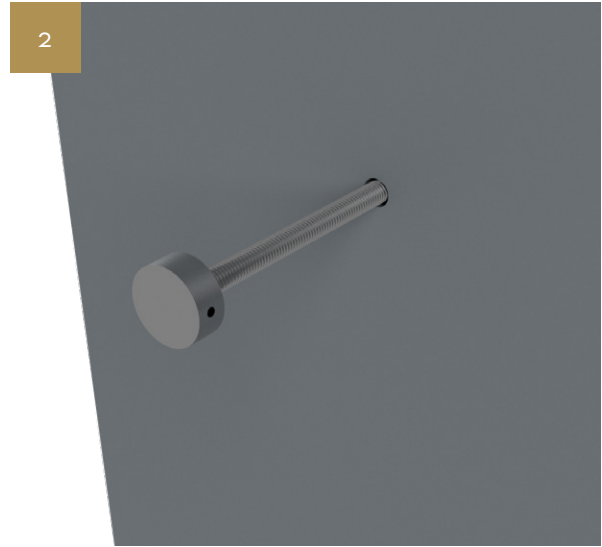
BOLT FIX UNIVERSAL FIX - FIXING KIT

LIT-FG-FX-UF-FK-BF



1
Mark out on the door where the product will be installed, if the product requires 2 kits make sure the hole centres are correct.

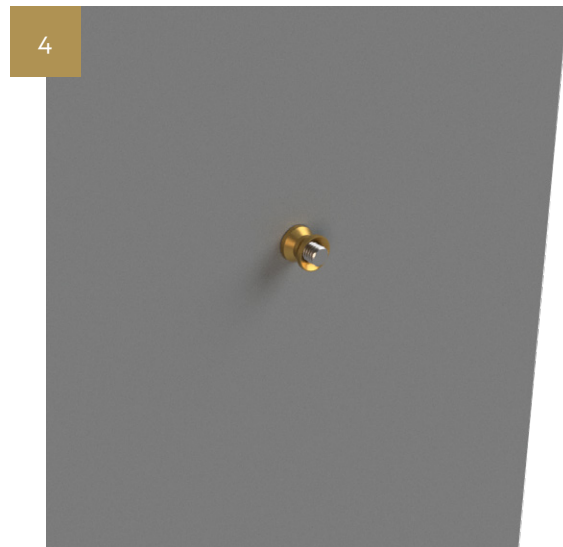
With a 10mm drill bore a hole right the way through the door.



2
Take the long bolt and from the inside of the door push the bolt right the way through the door.



3
You can use the small location hole to insert a small Allen key to allow you to tighten the bolt up against the Brass Ferrule.



4
Take the threaded brass ferrule and screw onto the bolt until this is tight to the face of the door.

NOTE: The bolt should sit just proud of the brass ferrule when installed, you might need to cut the bolt down to achieve this, mark the bolt then remove and cut if required.

FITTING GUIDE

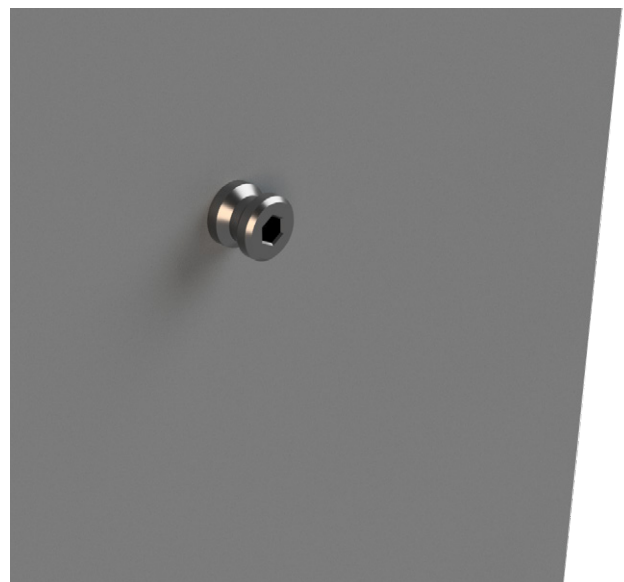
SECRET FIX ALUMINIUM

LIT-FG-FX-10030-BLU



Mark out on the door where the product will be installed, if the product requires 2 kits make sure the hole centres are correct.

With a 10mm drill bore a hole roughly 38mm deep into the aluminium skin of the door.



Take the FX-10030-BLU fixing and screw into the aluminium skin using a 6mm Allen key until this sits flush with the face of the door.

FITTING GUIDE

SECRET FIX TIMBER

LIT-FG-FX-UF-FK-SF

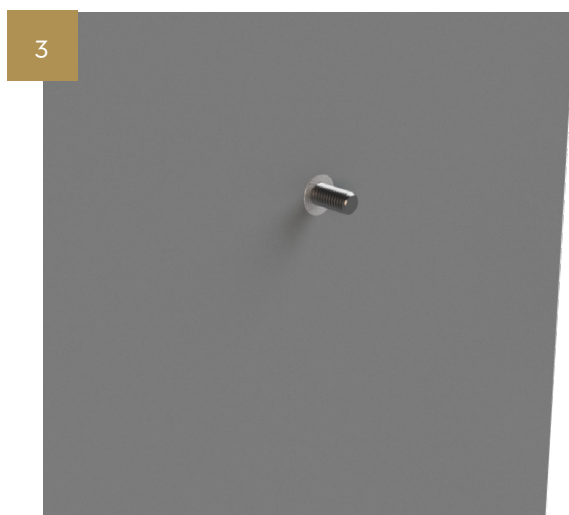


Mark out on the door where the product will be installed, if the product requires 2 kits make sure the hole centres are correct.

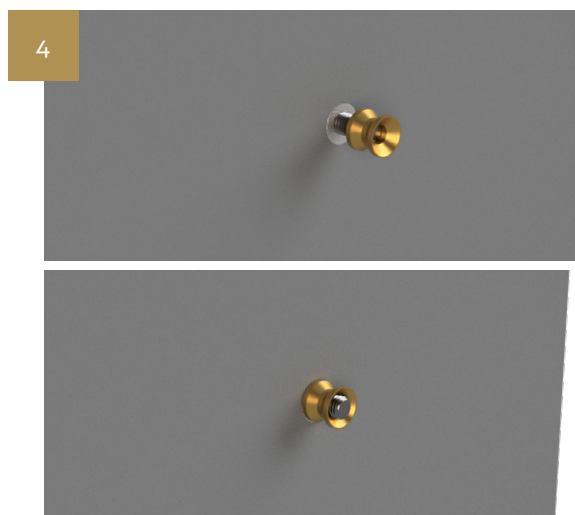
With a 14mm drill bore a hole roughly 38mm deep into the door this will allow the installation of the 50mm bolt without cutting down, minimum hold depth is 20mm but the threaded bar might need cutting down.



Take the Rampa fixing and locate the small flat end into the hole, taking a 6mm Allen key tighten the Rampa fixing until it is flush to the face of the door.



Next screw the threaded bar into the Rampa fixing leaving roughly 15mm protruding.



Take the threaded brass ferrule and screw onto the bolt until this is tight to the face of the door.

NOTE: The bolt should sit just proud of the brass ferrule when installed, you might need to cut the bolt down to achieve this, mark the bolt then remove and cut if required.